

# SECTION A: DWV AND STORMWATER SYSTEMS



## FITTINGS

### PLAIN BEND F+F



SIZE	CODE	BOX QUANTITY	COMMENT
32mm x 15°	101-32-15		
32mm x 45°	101-32-45	80	
32mm x 88°	101-32-88	140	
40mm x 15°	101-40-15	50	
40mm x 45°	101-40-45	130	
40mm x 88°	101-40-88	100	
50mm x 15°	101-50-15	60	
50mm x 45°	101-50-45	70	
50mm x 88°	101-50-88	50	
65mm x 15°	101-65-15		
65mm x 45°	101-65-45		
65mm x 88°	101-65-88		
80mm x 15°	101-80-15		
80mm x 45°	101-80-45		
80mm x 88°	101-80-88		
90mm x 15°	701-90-15	120	SW
90mm x 22°	701-90-22	120	SW
90mm x 45°	701-90-45	100	SW
90mm x 88°	701-90-88	70	SW
100mm x 5°	101-100-05	60	
100mm x 11°	101-100-11	60	
100mm x 15°	101-100-15	56	
100mm x 22°	101-100-22	40	
100mm x 30°	101-100-30	42	
100mm x 45°	101-100-45	40	
100mm x 60°	101-100-60	30	
100mm x 88°	101-100-88	26	
100mm x 88°	101-100-88W		Inspection Bend
150mm x 15°	101-150-15	18	
150mm x 45°	101-150-45	12	
150mm x 45°	701-150-45		SW
150mm x 88°	101-150-88	6	
150mm x 88°	701-150-88	10	SW
175mm x 15°	701-175-15		SW

#### Key

All items are DWV unless noted  
M+F = Male, Female Ends

DWV= Drain Waste and Vent  
F+F= Female, Female Ends

SW= Stormwater  
ADJ= Adjustable

175mm x 45°	701-175-45	SW
175mm x 88°	701-175-88	SW
225mm x 15°	701-225-15	SW
225mm x 45°	101-225-45	
225mm x 45°	701-225-45	SW
225mm x 88°	101-225-88	
225mm x 88°	701-225-88	SW
300mm x 45°	701-300-45	SW
300mm x 88°	701-300-88	SW
375mm x 45°	701-375-45	SW
375mm x 88°	701-375-88	SW

## PLAIN BEND M+F



SIZE	CODE	BOX QUANTITY	COMMENT
40mm x 45°	171-40-45	60	
40mm x 88°	171-40-88	100	
40mm x 88°	178-40-88		In to Pipe
50mm x 40mm x 45°	171-50-40-45		M+F Reducing Bend
50mm x 45°	171-50-45	80	
50mm x 88°	171-50-88	50	
50mm x 88°	178-50-88		In to Pipe
65mm x 45°	171-65-45	35	
65mm x 88°	171-65-88	12	
80mm x 45°	171-80-45		
90mm x 45°	771-90-45	100	SW
100mm x 5°	171-100-05	18	
100mm x 11°	171-100-11	65	
100mm x 15°	171-100-15	60	
100mm x 22°	171-100-22	60	
100mm x 30°	171-100-30	45	
100mm x 45°	171-100-45	45	
100mm x 60°	171-100-60	16	
100mm x 88°	171-100-88	30	
100mm x 88°	171-100-88T		Tight Radius
150mm x 15°	171-150-15	18	
150mm x 45°	171-150-45	12	
150mm x 88°	171-150-88	9	

### Key

All items are DWV unless noted  
M+F = Male, Female Ends

DWV= Drain Waste and Vent  
F+F= Female, Female Ends

SW= Stormwater  
ADJ= Adjustable

### REAR ACCESS BEND



SIZE	CODE	BOX QUANTITY	COMMENT
100mm x 88°	102-100-88		
150mm x 88°	102-150-88		

### ACCESS BENDS



SIZE	CODE	BOX QUANTITY	COMMENT
100mm x 45°	103-100-45	18	100mm inspection
100mm x 88°	103-100-88	18	100mm inspection

#### Key

All items are DWV unless noted  
M+F = Male, Female Ends

DWV= Drain Waste and Vent  
F+F= Female, Female Ends

SW= Stormwater  
ADJ= Adjustable

## PLAIN JUNCTIONS



104 codes 45° junction



104 codes 88° junction



704 codes 45° junction



704 codes 88° junction

SIZE	CODE	BOX QUANTITY	COMMENT
32mm x 45°	104-32-45		
32mm x 88°	104-32-88	36	
40mm x 45°	104-40-45	40	
40mm x 88°	104-40-88	60	
50mm x 45°	104-50-45	32	
50mm x 88°	104-50-88	30	
65mm x 45°	104-65-45	30	
65mm x 88°	104-65-88	15	
80mm x 45°	104-80-45	15	
80mm x 88°	104-80-88	15	
90mm x 45°	704-90-45	36	SW Threaded ends
90mm x 88°	704-90-88	24	SW Threaded ends
100mm x 45°	104-100-45	16	
100mm x 45°	104-100-45U	16	Unthreaded End
100mm x 88°	104-100-88	20	Threaded ends
100mm x 45°	174-100-45	16	M+F
100mm x 88°	174-100-88	16	M+F
150mm x 45°	104-150-45	4	
150mm x 45°	704-150-45	6	SW
150mm x 88°	104-150-88	6	
150mm x 88°	704-150-88	6	SW
175mm x 45°	704-175-45		SW
175mm x 88°	704-175-88		SW
225mm x 45°	104-225-45		
225mm x 45°	704-225-45		SW
225mm x 88°	704-225-88		SW
300mm x 45°	704-300-45		SW
300mm x 88°	704-300-88		SW

### Key

All items are DWV unless noted  
M+F = Male, Female Ends

DWV= Drain Waste and Vent  
F+F= Female, Female Ends

SW= Stormwater  
ADJ= Adjustable

## REDUCING JUNCTIONS



45° reducing junction



88° reducing junction

SIZE	CODE	BOX QUANTITY	COMMENT
100mm x 50mm x 45°	104-100-50-45	26	
100mm x 50mm x 88°	104-100-50-88	16	
100mm x 65mm x 45°	104-100-65-45	24	
150mm x 100mm x 45°	104-150-100-45	8	
150mm x 100mm x 88°	104-150-100-88		
150mm x 100mm x 45°	174-150-100-45		M+F
150mm x 100mm x 45°	704-150-100-45	8	SW
150mm x 100mm x 88°	704-150-100-88	10	SW
175mm x 100mm x 45°	704-175-100-45		SW
175mm x 150mm x 45°	704-175-150-45		SW
175mm x 150mm x 88°	704-175-150-88		SW
225mm x 100mm x 45°	704-225-100-45		SW
225mm x 100mm x 88°	704-225-100-88		SW
225mm x 150mm x 45°	704-225-150-45		SW
225mm x 150mm x 88°	704-225-150-88		SW
225mm x 175mm x 45°	704-225-175-45		SW
300mm x 150mm x 45°	704-300-150-45		SW
300mm x 225mm x 45°	704-300-225-45		SW

### Key

All items are DWV unless noted  
M+F = Male, Female Ends

DWV= Drain Waste and Vent  
F+F= Female, Female Ends

SW= Stormwater  
ADJ= Adjustable

## ACCESS JUNCTIONS



SIZE	CODE	BOX QUANTITY	COMMENT
100mm x 45°LH	105-100-45LH	12	100mm inspection
100mm x 45°RH	105-100-45RH	12	100mm inspection
100mm x 88°	105-100-88	12	100mm inspection, rear access

## DOUBLE JUNCTIONS



SIZE	CODE	BOX QUANTITY	COMMENT
100mm x 88°	706-100-88		SW

### Key

All items are DWV unless noted  
M+F = Male, Female Ends

DWV= Drain Waste and Vent  
F+F= Female, Female Ends

SW= Stormwater  
ADJ= Adjustable

## PLAIN COUPLINGS



Threaded and SW couplings



110-100U and all sizes  
80mm and below.

SIZE	CODE	BOX QUANTITY	COMMENT
32mm	110-32	120	
40mm	110-40	80	
50mm	110-50	70	
65mm	110-65	24	
80mm	110-80	36	
90mm	710-90	50	SW Threaded
100mm	110-100T	60	Threaded
100mm	110-100U	60	
150mm	110-150T	18	Threaded
150mm	710-150	12	SW
175mm	710-175		SW
225mm	710-225		SW
300mm	710-300		SW
375mm	710-375		SW, Green

## SLIP COUPLINGS



711S-90



Green fittings



1511S fittings

SIZE	CODE	BOX QUANTITY	COMMENT
90mm	711S-90	120	SW Glued
100mm	1511S-100		
150mm	1511S-150		
175mm	711S-175		Green
225mm	711S-225		Green
300mm	711S-300		Green

### Key

All items are DWV unless noted  
M+F = Male, Female Ends

DWV= Drain Waste and Vent  
F+F= Female, Female Ends

SW= Stormwater  
ADJ= Adjustable

### QUICK REPAIR COUPLINGS



SIZE	CODE	BOX QUANTITY	COMMENT
100mm	115-100		
150mm	115-150		

### BSP THREAD TO PVC SOCKET



Female Thread    Male Thread

SIZE	CODE	BOX QUANTITY	COMMENT
32mm	112-32	40	Female Thread
40mm	112-40	75	Female Thread
50mm	112-50	48	Female Thread
32mm	113-32	40	Male Thread
40mm	113-40	75	Male Thread
50mm	113-50	48	Male Thread

### CLAMP SADDLE



SIZE	CODE	BOX QUANTITY	COMMENT
100mm x 50mm	119-100-50	42	Strap Boss

#### Key

All items are DWV unless noted  
M+F = Male, Female Ends

DWV= Drain Waste and Vent  
F+F= Female, Female Ends

SW= Stormwater  
ADJ= Adjustable

## LEVEL INVERTS



M+F Invert



F+F Invert

SIZE	CODE	BOX QUANTITY	COMMENT
40mm x 32mm	123-40-32		M+F
50mm x 40mm	123-50-40	75	M+F
65mm x 40mm	123-65-40	44	M+F
65mm x 50mm	123-65-50	44	M+F
80mm x 50mm	123-80-50	24	M+F
80mm x 65mm	123-80-65	24	M+F
100mm x 50mm	123-100-50	32	M+F
100mm x 65mm	123-100-65	40	M+F
100mm x 80mm	123-100-80	45	M+F
150mm x 100mm	123-150-100	12	M+F
175mm x 100mm	723-175-100		F+F SW
175mm x 150mm	723-175-150		F+F SW
225mm x 150mm	723-225-150M		M+F SW
225mm x 150mm	723-225-150		F+F SW
225mm x 175mm	723-225-175		F+F SW
300mm x 150mm	723-300-150M		M+F SW
300mm x 175mm	723-300-175		F+F SW
300mm x 225mm	723-300-225		F+F SW
300mm x 225mm	723-300-225M		M+F SW

## DOWNPIPE ADAPTORS



725-100 Adaptors



725-80 and 725-90 Adaptors



724-90-100

SIZE	CODE	BOX QUANTITY	COMMENT
80mm-65mm	725-80-65		
90mm-65mm	725-90-65		
90mm-80mm	725-90-80		
100mm-65mm	725-100-65		
100mm-80mm	725-100-80		
100mm-90mm	725-100-90		
90mm-100mm	724-90-100		For 100mm Alloy Grate
100mm-100mm	725-100		Fits 135mm Grate

### Key

All items are DWV unless noted  
M+F = Male, Female Ends

DWV= Drain Waste and Vent  
F+F= Female, Female Ends

SW= Stormwater  
ADJ= Adjustable

## SOCKET REDUCERS



SIZE	CODE	BOX QUANTITY	COMMENT	
40mm x 32mm	124-40-32	50	All of these go inside socket	
50mm x 40mm	124-50-40	120		
65mm x 40mm	124-65-40	66		
65mm x 50mm	124-65-50	63		
80mm x 50mm	124-80-50	66		
80mm x 65mm	124-80-65			
100mm x 40mm	124-100-40			
100mm x 50mm	124-100-50			
100mm x 65mm	124-100-65			
100mm x 80mm	124-100-80	14		
100mm x 90mm	724-100-90			SW
150mm x 100mm	724-150-100			SW
175mm x 150mm	724-175-150			SW

## PIPE REDUCERS



SIZE	CODE	BOX QUANTITY	COMMENT
50mm x 40mm	198-50-40	120	All of these go inside pipe
65mm x 50mm	198-65-50	100	
100mm x 40mm	198-100-40	45	
100mm x 50mm	198-100-50	40	
100mm x 65mm	198-100-65	18	
100mm x 90mm	798-100-90		SW

### Key

All items are DWV unless noted  
M+F = Male, Female Ends

DWV= Drain Waste and Vent  
F+F= Female, Female Ends

SW= Stormwater  
ADJ= Adjustable

## EARTHEN WARE ADAPTORS



125-100



126 codes



725-225



726-225

SIZE	CODE	BOX QUANTITY	COMMENT
100mm	125-100	16	To fit over EW Pipe F+F
100mm	126-100		To fit into EW Pipe
150mm	126-150		To fit into EW Pipe
225mm	725-225		SW To fit over EW Pipe
225mm	726-225		SW To fit into EW Pipe

## PAN COLLAR



SIZE	CODE	BOX QUANTITY	COMMENT
100mm	127-100	4	
100mm	128-100	4	Offset

## ACCESS/INSPECTION PIPE



SIZE	CODE	BOX QUANTITY	COMMENT
100mm	129-100	20	
100mm	129-100C		No Screw Cap, Septic Tee
150mm	129-150	6	
100mm	179-100		M+F
175mm	729-175		SW. Not suitable for constant head of water

### Key

All items are DWV unless noted  
M+F = Male, Female Ends

DWV= Drain Waste and Vent  
F+F= Female, Female Ends

SW= Stormwater  
ADJ= Adjustable

### INLINE VALVE



SIZE	CODE	COMMENT
100mm	795-100	SW Reflux
150mm	795-150	SW Reflux

### FLASHING CONE



SIZE	CODE	COMMENT
40mm	131-40	
50mm	131-50	

### VENT COWL



SIZE	CODE	BOX QUANTITY	COMMENT
50mm	150-50-40	60	40mm or 50mm
65mm	150-65		
80mm	150-80	24	
100mm	150-100		

#### Key

All items are DWV unless noted  
M+F = Male, Female Ends

DWV= Drain Waste and Vent  
F+F= Female, Female Ends

SW= Stormwater  
ADJ= Adjustable

## ACCESS CAP AND BASE



90mm and below



175mm and above



100 and 150mm

SIZE	CODE	COMMENT
32mm	136-32	
40mm	136-40	
50mm	136-50	
80mm	136-80	
90mm	736-90	SW. Rubber not included
100mm	136-100	
150mm	136-150	
175mm	736-175	SW
225mm	736-225	SW
300mm	736-300	SW. Not stocked

## SCREW CAPS



SIZE	CODE	BOX QUANTITY	COMMENT
90mm	736C-90	40	SW. Rubber not included
100mm	136C-100	60	
150mm	136C-150		

## PUSH ON CAPS



SIZE	CODE	BOX QUANTITY	COMMENT
32mm	137-32		
40mm	137-40	100	
50mm	137-50	50	
65mm	137-65	70	
80mm	137-80	50	
90mm	737-90	50	SW
100mm	137-100	60	
100mm	137B-100		Dust Cap
150mm	137-150	20	
175mm	737-175		SW Terracotta colour
225mm	737-225		SW
300mm	737-300		SW
375mm	737-375		SW Terracotta colour

### Key

All items are DWV unless noted  
M+F = Male, Female Ends

DWV= Drain Waste and Vent  
F+F= Female, Female Ends

SW= Stormwater  
ADJ= Adjustable

### METAL CLIPS



SIZE	CODE	BOX QUANTITY	COMMENT
90mm	145-90	50	White Stand Off from Wall Clip

### PLASTIC CLIPS



50mm and below

SIZE	CODE	BOX QUANTITY	COMMENT
32mm	140-32		
40mm	140-40	120	
50mm	140-50	100	
80mm	140-80S		Stand Off
100mm	140-100		
100mm	140-100S		Stand Off



Stand off



140-100

### BOLTED TRAP SCREW



SIZE	CODE	COMMENT
100mm	160-100	
150mm	160-150	

#### Key

All items are DWV unless noted  
M+F = Male, Female Ends

DWV= Drain Waste and Vent  
F+F= Female, Female Ends

SW= Stormwater  
ADJ= Adjustable

## HOLDERBATS



SIZE	CODE	BOX QUANTITY	COMMENT
65mm	140A-65		Adjustable Aluminium Holderbat
80mm	140A-80		
90mm	140A-90		
100mm	140A-100	50	
150mm	140A-150	100	
175mm	140A-175		
225mm	140A-225		
300mm	140A-300		

## MUNZING RING



SIZE	CODE	BOX QUANTITY	COMMENT
80mm	142-80		Two Piece Zinc Plated Munzing Ring
100mm	142-100		
150mm	142-150	40	
175mm	142-175		
225mm	142-225		Not stocked
300mm	142-300		
10mm x 1m	142-Rod		Threaded Rod Zinc
	142W-Base		Welded Zinc Base Plate

### Key

All items are DWV unless noted  
M+F = Male, Female Ends

DWV= Drain Waste and Vent  
F+F= Female, Female Ends

SW= Stormwater  
ADJ= Adjustable

### GULLY TRAPS



SIZE	CODE	BOX QUANTITY	COMMENT
80mm x 50mm	158-80-50	10	ADJ
80mm x 65mm	158-80-65	8	ADJ
100mm x 50mm	159-100-50		ADJ
100mm x 65mm	159-100-65		ADJ
100mm	159-100	15	ADJ

### GULLY DISH AND LID



SIZE	CODE	BOX QUANTITY	COMMENT
100mm	1575-100	12	
100mm	1575L-100		Gully lids only

### GULLY DISH EXTENSION



SIZE	CODE	COMMENT
100mm	176-100-100	
200mm	176-100-200	Also known as risers
300mm	176-100-300	

### KERB OUTLETS



SIZE	CODE	COMMENT
100mm	165-100	

#### Key

All items are DWV unless noted  
M+F = Male, Female Ends

DWV= Drain Waste and Vent  
F+F= Female, Female Ends

SW= Stormwater  
ADJ= Adjustable

### FINISHING COLLAR & GRATE



SIZE	CODE	BOX QUANTITY	COMMENT
100mm	168-100D	48	DWV Dome Grate
100mm	168-100G		Flat Grate
100mm	168-100C	90	Finishing Collar
100mm	168-100		Finishing Collar with Grate

### RISERS



SIZE	CODE	BOX QUANTITY	COMMENT
80mm	174-80-5444-88		4 way
100mm	174-100-5554-88	10	4 way

### FLAP VALVES



758 codes

SIZE	CODE	BOX QUANTITY	COMMENT
50mm	150-50VT	40	Vermin Trap
100mm	758-100	8	SW
150mm	758-150		SW
175mm	758-175		SW
225mm	758-225		SW
300mm	758-300		SW



150-50VT

#### Key

All items are DWV unless noted  
M+F = Male, Female Ends

DWV= Drain Waste and Vent  
F+F= Female, Female Ends

SW= Stormwater  
ADJ= Adjustable

### FRESH AIR INLET



SIZE	CODE	COMMENT
100mm	1516-100	

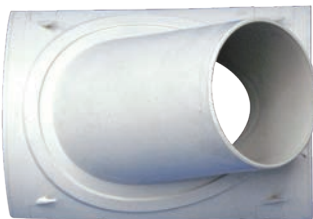
### SLAB REPAIR COUPLING



SIZE	CODE	BOX QUANTITY	COMMENT
40mm	178-40		Large end is a socket
50mm	178-50		Large end is a socket
65mm	178-65		Large end is a socket
80mm	178-80		Large end is a socket
100mm	178-100	36	Large end is a socket
100mm	178-100P	36	Large end is a pipe
150mm	178-150	14	Large end is a socket

NOTE: The small end fits inside the pipe, the large end goes inside the pipe socket.

### SADDLES



SIZE	CODE	COMMENT
150mm x 100mm	SAD150-100	Comes in 45 degree. Most sizes are injection moulded.
175mm x 100mm	SAD175-100	
175mm x 150mm	SAD175-150	
225mm x 100mm	SAD225-100I	
225mm x 150mm	SAD225-150I	
300mm x 100mm	SAD300-100I	
300mm x 150mm	SAD300-150I	
375mm x 100mm	SAD375-100I	
375mm x 150mm	SAD375-150I	

#### Key

All items are DWV unless noted  
M+F = Male, Female Ends

DWV= Drain Waste and Vent  
F+F= Female, Female Ends

SW= Stormwater  
ADJ= Adjustable

## SPLITTER BOXES



SIZE	CODE	COMMENT
100mm x 100mm x 100mm outlets	43-710	Splitterbox
150mm x 150mm x 150mm outlets	43-712	Splitterbox. Not stocked
175mm x 175mm x 175mm outlets	43-714	Splitterbox. Not stocked
225mm x 225mm x 225mm outlets	43-716	Splitterbox. Not stocked

## SLIDE VALVES



SIZE	CODE	COMMENT
100mm	620-100	Watertight
150mm	620-150	Watertight

### Key

All items are DWV unless noted  
M+F = Male, Female Ends

DWV= Drain Waste and Vent  
F+F= Female, Female Ends

SW= Stormwater  
ADJ= Adjustable

## PIPE

### DWV PIPE SOLID WALL

- Made to AS/NZS 1260
- 6 metre lengths
- Solvent joint



PRODUCT CODE	DESCRIPTION	SN RATING	CRATE QTY	NOMINAL SIZE (MM)	OUTSIDE DIAMETER (MM)
100-32-6MI	32mm DWV Pipe Solid Wall	N/A		32	36
100-40-6MI	40mm DWV Pipe Solid Wall	N/A	140	40	43
100-50-6MI	50mm DWV Pipe Solid Wall	N/A	78	50	56
100-65-6MI	65mm DWV Pipe Solid Wall	N/A	53	65	69
100-80-6MI	80mm DWV Pipe Solid Wall	N/A	69	80	83
100-100-6MI	100mm DWV Pipe Solid Wall	SN6	67	100	110
100-150-6MI	150mm DWV Pipe Solid Wall	SN4	33	150	160
100-175-6MI	175mm DWV Pipe Solid Wall	SN4	18	175	200
100-225-6MI	225mm DWV Pipe Solid Wall	SN4	11	225	250

### DWV PIPE 1-METRE LENGTHS

- Made to AS/NZS 1260
- Solid wall construction



PRODUCT CODE	DESCRIPTION	NOMINAL SIZE (MM)	OUTSIDE DIAMETER (MM)
100-32-1M	32mm DWV Pipe	32	36
100-40-1M	40mm DWV Pipe	40	43
100-50-1M	50mm DWV Pipe	50	56

#### Key

All items are DWV unless noted  
M+F = Male, Female Ends

DWV= Drain Waste and Vent  
F+F= Female, Female Ends

SW= Stormwater  
ADJ= Adjustable

## STORM WATER PIPE

- Made to AS/NZS 1254
- 6 metre lengths
- Solvent joint
- Solid wall construction



PRODUCT CODE	DESCRIPTION	SN RATING	CRATE QTY	NOMINAL SIZE (MM)	OUTSIDE DIAMETER (MM)
700-90-6MI	90mm Stormwater Pipe Solid Wall	SN4	63	90	92
700-150-6MI	150mm Stormwater Pipe Solid Wall	SN2	33	150	160
700-175-6MI	175mm Stormwater Pipe Solid Wall	SN2	18	175	200
700-225-6MI	225mm Stormwater Pipe Solid Wall	SN2	11	225	250
700-300-6MI	300mm Stormwater Pipe Solid Wall	SN2	6	300	315

### Key

All items are DWV unless noted  
M+F = Male, Female Ends

DWV= Drain Waste and Vent  
F+F= Female, Female Ends

SW= Stormwater  
ADJ= Adjustable

## METRIC CONVERSION TABLE

Metric	Imperial	Applications
15mm	1/2"	Pressure
20mm	3/4"	Pressure
25mm	1"	Pressure
32mm	1 1/4"	Pressure, DWV
40mm	1 1/2"	Pressure, DWV
50mm	2"	Pressure, DWV
65mm	2 1/2"	Pressure, DWV
80mm	3"	Pressure, DWV
100mm	4"	Pressure, DWV, Stormwater
150mm	6"	Pressure, DWV, Stormwater
175mm	8"	DWV, Stormwater
225mm	10"	DWV, Stormwater
315mm	12"	DWV, Stormwater

### Key

All items are DWV unless noted  
M+F = Male, Female Ends

DWV= Drain Waste and Vent  
F+F= Female, Female Ends

SW= Stormwater  
ADJ= Adjustable

To view technical documents  
please visit [www.pandfglobal.com](http://www.pandfglobal.com)