

SECTION D: GATEWAY CULVERT PIPE



GATEWAY CULVERT FITTINGS

BEND



SIZE	CODE	COMMENT
110mm x 15°	501-110-15	
110mm x 45°	501-110-45	
110mm x 88°	501-110-88	
160mm x 15°	501-160-15	
160mm x 45°	501-160-45	
160mm x 88°	501-160-88	
200mm x 15°	501-200-15	
200mm x 45°	501-200-45	
200mm x 88°	501-200-88	
250mm x 15°	501-250-15	
250mm x 45°	501-250-45	
250mm x 88°	501-250-88	
315mm x 45°	501-315-45	
315mm x 88°	501-315-88	
400mm x 45°	501-400-45	
400mm x 88°	501-400-88	

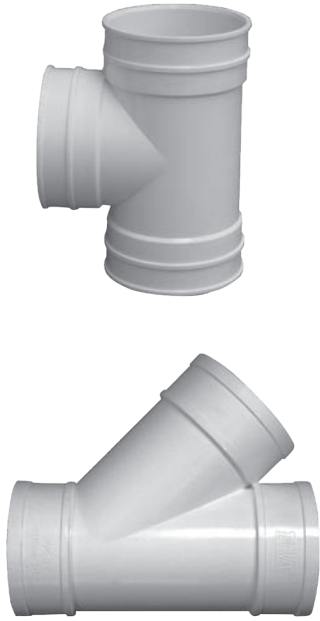
Key

All items are DWV unless noted
M+F = Male, Female Ends

DWV= Drain Waste and Vent
F+F= Female, Female Ends

SW= Stormwater
ADJ= Adjustable

JUNCTION



SIZE	CODE	COMMENT
110mm x 45°	504-110-45	F+F Junction
110mm x 88°	504-110-88	F+F Junction
160mm x 110mm x 45°	504-160-110-45	F+F Reducing Junction
160mm x 110mm x 88°	504-160-110-88	F+F Reducing Junction
160mm x 45°	504-160-45	F+F Junction
160mm x 88°	504-160-88	F+F Square Junction
200mm x 110mm x 45°	504-200-110-45	F+F Reducing Junction
200mm x 160mm x 45°	504-200-160-45	F+F Reducing Junction
200mm x 45°	504-200-45	F+F Junction
250mm x 110mm x 45°	504-250-110-45	F+F Reducing Junction
250mm x 110mm x 88°	504-250-110-88	F+F Reducing Junction
250mm x 160mm x 45°	504-250-160-45	F+F Reducing Junction
250mm x 160mm x 88°	504-250-160-88	F+F Reducing Junction
250mm x 45°	504-250-45	F+F Junction
250mm x 88°	504-250-88	F+F Junction
315mm x 160mm x 45°	504-315-160-45	F+F Reducing Junction
315mm x 88°	504-315-88	F+F Junction
315mm x 250mm x 45°	504-315-250-45	F+F Reducing Junction

DOUBLE JUNCTION



SIZE	CODE	COMMENT
110mm x 88°	506-110-88	F+F Double Junction
160mm x 88°	506-160-88	F+F Double Junction

Key

All items are DWV unless noted
M+F = Male, Female Ends

DWV= Drain Waste and Vent
F+F= Female, Female Ends

SW= Stormwater
ADJ= Adjustable

JOINER



SIZE	CODE	COMMENT
110mm	510-110	
160mm	510-160	
200mm	510-200	
250mm	510-250	
315mm	510-315	
400mm	510-400	

INVERT



SIZE	CODE	COMMENT
160mm x 110mm	523-160-110	M+F Level Invert
200mm x 110mm	523-200-110	F+F Level Invert
200mm x 160mm	523-200-160	F+F Level Invert
250mm x 160mm	523-250-160	F+F Level Invert
250mm x 200mm	523-250-200	F+F Level Invert
315mm x 160mm	523-315-160	M+F Level Invert
315mm x 200mm	523-315-200	F+F Level Invert
315mm x 250mm	523-315-250	F+F Level Invert

CAP AND BASE



SIZE	CODE	COMMENT
200mm	536-200	
250mm	536-250	
315mm	536-315	

ACCESS PIPES



SIZE	CODE	COMMENT
110mm	529-110	
160mm	529-160	
200mm	529-200	

Key

All items are DWV unless noted
M+F = Male, Female Ends

DWV= Drain Waste and Vent
F+F= Female, Female Ends

SW= Stormwater
ADJ= Adjustable

GLUE CAP



SIZE	CODE	COMMENT
110mm	537-110	
160mm	537-160	
200mm	537-200	
250mm	537-250	
315mm	537-315	
400mm	537-400	

FLAP VALVE



SIZE	CODE	COMMENT
110mm	558-110	
160mm	558-160	
200mm	558-200	
250mm	558-250	
315mm	558-315	

GATEWAY CULVERT PIPE

PIPE



PIPE	SIZE	CODE	NOMINAL BORE (MM)	COMMENT	CRATE QTY
	110mm x 5m	550-110-5M	100	110mm Farm Culvert Pipe Gateway	67
	160mm x 5m	550-160-5M	150	160mm Farm Culvert Pipe Gateway	33
	200mm x 5m	550-200-5M	175	200mm Farm Culvert Pipe Gateway	18
	250mm x 5m	550-250-5M	225	250mm Farm Culvert Pipe Gateway	11
	315mm x 5m	550-315-5M	300	315mm Farm Culvert Pipe Gateway	6
	400mm x 6m	550-400-6M	375	400mm Farm Culvert Pipe Gateway	3

Size is outside diameter of pipe.
400mm is not socketed, joiners are sold separately.

Key

All items are DWV unless noted
M+F = Male, Female Ends

DWV= Drain Waste and Vent
F+F= Female, Female Ends

SW= Stormwater
ADJ= Adjustable

GATEWAY CULVERT PIPE

BENEFITS:

- Strong
- No rust problem
- Easy to handle
- Proven, time tested product

TECHNICAL DATA:

- Made to AS/NZS1254 Standard
- Socket one end
- uPVC construction
- 5m long standard length
- 6m long available
- Sizes are outside diameter of pipe

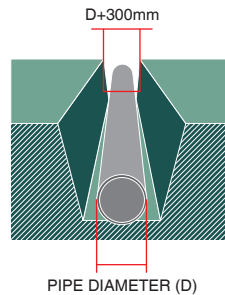
USES:

- Farm culverts
- Forestry culverts
- Cut in 1/2 lengthways
- Stock troughs, fluming
- Builders - columns

TIPS:

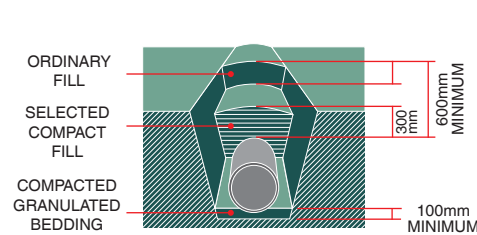
- Project end of pipe to prevent erosion of backfill downstream
- Timber, stone or grass headwalls to prevent erosion upstream
- No sharp objects in contact with pipe when laying or backfilling
- Socket end of pipe to face upstream

INSTALLATION:



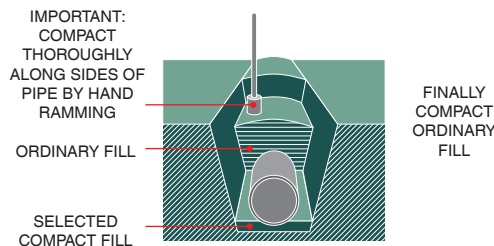
EXCAVATION

Dig a trench 300mm wider than the pipe. Ideal depth of cover is 600mm.



PIPE LAYING

Bedding to be 5-20mm compacted granular material. Lay pipe in centre of trench. Selected compactible fill (not wet clay) added in layers around pipe to 300mm cover. Top up trench with compacted ordinary fill.

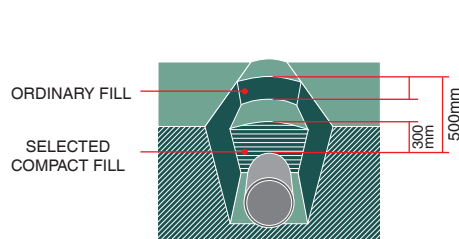


COMPACTION OF BEDDING

GATEWAY pipes uses its flexibility to transfer load to the surrounding bedding.

Thorough compaction of the fill along the pipe sides is important to ensure long, trouble free service.

Fill should be carefully compacted by hand ramming along the sides of and around the pipe and built up to the finished ground surface.



LIGHT DUTY INSTALLATION

Selected excavation fill may be used as bedding. It should be substantially free from rock, tree roots or rubbish. Wet or saturated clay shouldn't be used as bedding or surrounding material. The minimum depth of cover should be 500mm.



To view technical documents
please visit www.pandfglobal.com