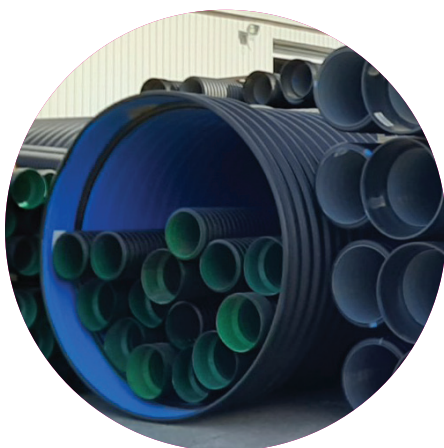


SECTION E: EUROFLO® PIPE



WHAT P&F GLOBAL CAN HELP WITH



Range

EUROFLO® culverts comes in a wide range of sizes from 110mm through to 2100mm. We also stock slotted drainage pipe in sizes from 110mm to 630mm.

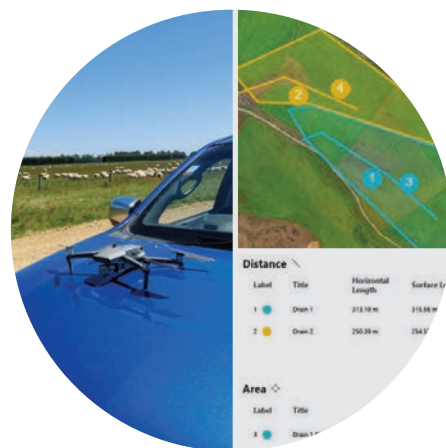
Choose from a wide range of fittings and accessories to make your next drainage project possible.



Stock

With a wide range of stock held in locations throughout New Zealand, P&F Global can get the stock where you need it, when you need it.

Kaitaia
Auckland
Napier
Christchurch
Invercargill



Expertise

We use our expertise to create personalised farm drainage plans through our free drone mapping service. Get better drainage in the right place with the right size culverts, all while considering environmental responsibilities around fish passage and stock management.

EUROFLO® PIPE

EUROFLO® RURAL SN4 PIPE

- 5.8 metre lengths overall including socket
- Rubber ring joint if needed – see page 69 for codes for the rubber rings
- 2.9M lengths available on request
- SN8 and SN16 range in sizes 250mm - 2100mm available for civil and/or heavy traffic installations i.e. milk tanker crossings



PRODUCT CODE	SIZE	SN RATING	CRATE QTY	INTERNAL DIAMETER (MM)	NOMINAL BORE (MM)	OUTSIDE DIAMETER (MM)
520-160-5.8M	160mm	SN8	33	134mm	150	160
520-200-5.8M	200mm	SN4	18	174mm	175	200
520-250-5.8M	250mm	SN4	11	214mm	225	250
520-315-5.8M	315mm	SN4	6	273mm	300	315
520-400-5.8M	400mm	SN4	3	343mm	375	400
520-500-5.8M	500mm	SN4	2	427mm	430	500
520-630-5.8M	630mm	SN4	1	533mm	525	630
520-800-5.8M	800mm	SN4	1	673mm	675	800
520-1000-5.8M	1000mm	SN4	1	849mm	850	1000
520-1200-5.8M	1200mm	SN4	1	1040mm	1050	1200

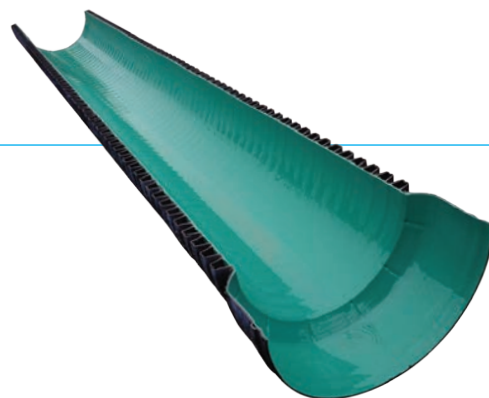


EUROFLO® rural pipe being installed on farm

EUROFLO® FLUMING (HALF PIPE)

- 5.8 metre lengths overall including socket
- Can be cut in half and used for feed troughs
- Leadtime for cutting pipe is 2 days for up to 10 lengths, 2-4 days for 10+ lengths

PRODUCT CODE	SIZE
520-200-FLUM	200mm
520-250-FLUM	250mm
520-315-FLUM	315mm
520-400-FLUM	400mm
520-500-FLUM	500mm
520-630-FLUM	630mm
520-800-FLUM	800mm
520-1000-FLUM	1000mm
520-1200-FLUM	1200mm



EUROFLO® fluming as seen on the St Bathans cycleway



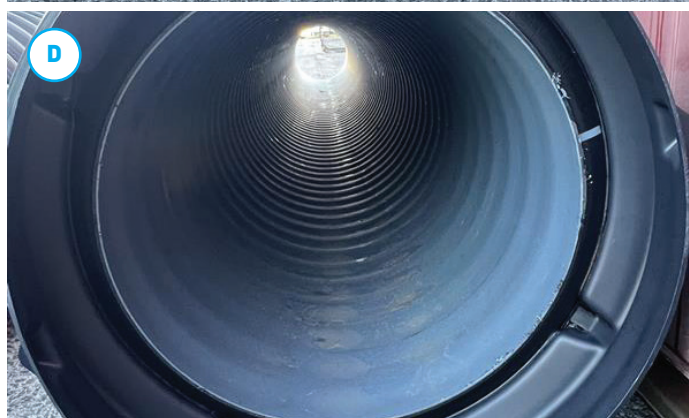
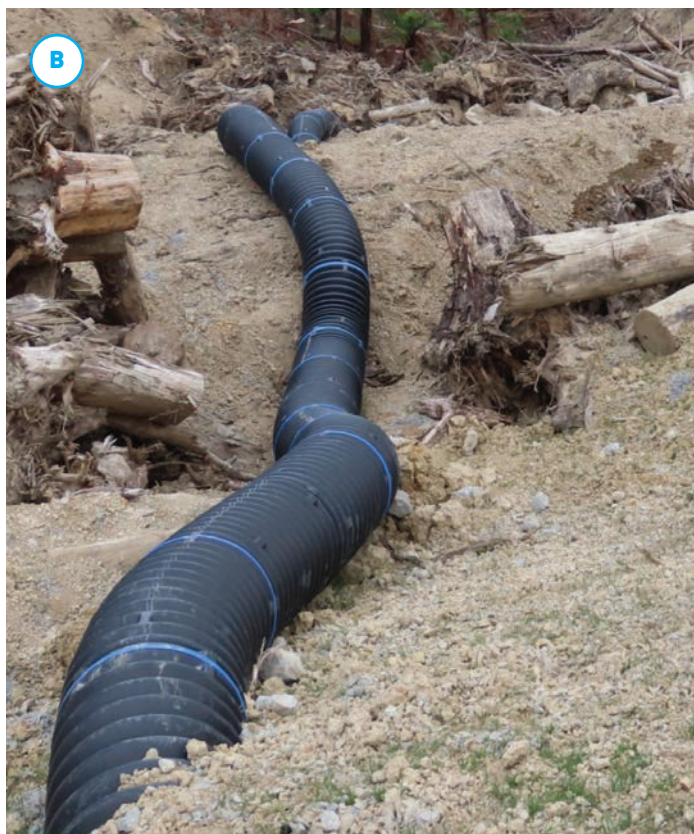
EUROFLO® fluming used for stormwater run-off in landscape design

EUROFLO® FLEXIPIPE

- 5.8 metre lengths overall including socket
- Single wall flexible culverts
- Bayonet connections for easy joining of flexipipe



PRODUCT CODE	SIZE	DESCRIPTION	INTERNAL DIAMETER (MM)	OUTSIDE DIAMETER (OD)
540-500-5.8M	500mm	Full-length flexible pipe	400	500
540-500-5.8M-FLEXI	500mm	Standard EUROFLO SN8 pipe with flexible connector	400	500
540-700-5.8M	700mm	Full-length flexible pipe	600	700
540-630-5.8M-FLEXI	700mm	Standard EUROFLO SN8 pipe with flexible connector	600	700



A: Standard 500mm SN8 EUROFLO® with Flexible connector (540-500-5.8M-FLEXI)

B: Full-length 500mm flexible pipe (540-500-5.8M)

C and D: Standard 630mm SN8 EUROFLO® with Flexible connector (540-630-5.8M-FLEXI)

EUROFLO® LARGE DIAMETER SN8 PIPE

- 5.8 metre lengths overall including socket
- Rubbers rings sold separately



PRODUCT CODE	SIZE	INTERNAL DIAMETER (MM)	NOMINAL BORE (MM)	OUTSIDE DIAMETER (MM)
560-1300-5.8M	1300mm	1200	1200	1300
560-1500-5.8M	1500mm	1400	1400	1500
560-1700-5.8M	1700mm	1600	1600	1700
560-1900-5.8M	1900mm	1800	1800	1900
560-2100-5.8M	2100mm	2000	2000	2100



EUROFLO® large diameter being installed on farm

EUROFLO® CIVIL SN8 PIPE

- Made to AS/NZS 5065-2005 and independently certified to meet the standard
- 5.8 metre lengths overall including socket
- Rubber ring joints available, see page 69 for details



PRODUCT CODE	SIZE	CRATE QTY	INTERNAL DIAMETER (MM)	NOMINAL BORE (MM)	OUTSIDE DIAMETER (MM)
560-250-5.8M	250mm	11	218mm	225	250
560-315-5.8M	315mm	6	273mm	300	315
560-400-5.8M	400mm	3	344mm	375	400
560-500-5.8M	500mm	2	427mm	450	500
560-630-5.8M	630mm	1	533mm	525	630
560-800-5.8M	800mm	1	691mm	675	800
560-1000-5.8M	1000mm	1	855mm	850	1000
560-1200-5.8M	1200mm	1	1024mm	1050	1200

2.9M SN8 PIPE

PRODUCT CODE	SIZE	CRATE QTY	INTERNAL DIAMETER (MM)	NOMINAL BORE (MM)	OUTSIDE DIAMETER (MM)
560-250-2.9M	250mm	11	218mm	225	250
560-315-2.9M	315mm	6	273mm	300	315
560-400-2.9M	400mm	3	344mm	375	400
560-500-2.9M	500mm	2	427mm	450	500
560-630-2.9M	630mm	1	533mm	525	630
560-800-2.9M	800mm	1	691mm	675	800
560-1000-2.9M	1000mm	1	855mm	850	1000
560-1200-2.9M	1200mm	1	1024mm	1050	1200

EUROFLO® CIVIL SN16 PIPE

- Made to AS/NZS 5065-2005 and independently certified to meet the standard
- 5.8 metre lengths overall including socket
- Rubber ring joints available, see page 69 for details
- Also available in 2.9m lengths



PRODUCT CODE	SIZE	CRATE QTY	INTERNAL DIAMETER (MM)	NOMINAL BORE (MM)	OUTSIDE DIAMETER (MM)
580-250-5.8M	250mm	11	214mm	225	250
580-315-5.8M	315mm	6	268mm	300	315
580-400-5.8M	400mm	3	339mm	375	400
580-500-5.8M	500mm	2	422mm	450	500
580-630-5.8M	630mm	1	530mm	525	630
580-800-5.8M	800mm	1	683mm	675	800



Civil SN8 pipe being laid down a hillside in Wellington.

IAPMO R&T OCEANA
7-11 Palfrey Road, Nare Warren, Victoria 3865, Australia






IAPMO R&T Oceana is a product certification body which inspects and arranges for the independent laboratory testing of samples taken from the manufacturer's stock or from the market or a combination of both, to verify compliance of the requirements of applicable Standards and Specifications. This activity is coupled with periodic surveillance of the manufacturer's factory and any major subcontractor's site as well as the assessment of the manufacturer's Quality Assurance System. This certification is subject to the conditions set forth in the characteristics below and is not to be construed as any recommendation, assurance or guarantee by IAPMO R&T Oceana of the product acceptance by Authorities Having Jurisdiction.

CERTIFICATE OF CONFORMITY

IAPMO R&T Oceana hereby grants to:

P & F GLOBAL LIMITED

58 Benmore Street, Prestonville, Invercargill 9810 New Zealand

the right to use the WaterMark in accordance with the WaterMark Manual for the WaterMark Certification Scheme - Australian Standards, WaterMark Technical Specifications, and the Plumbing Code of Australia, only in respect of the certified product as described in the WaterMark Certificate of Conformity - Schedule of Certified Products (R&T) also IAPMO Product Listing Document. The Certificate is granted subject to the rules governing the WaterMark Certification Scheme and the Terms and Conditions of the Approved User Agreement and IAPMO Oceana's WaterMark Governance Rules.

Evaluated to:

AS/NZS 5065-2005

Polyethylene and polypropylene pipes and fittings for drainage and sewerage applications

Manufacturer:
Refer to Licence Holder

Licence No.: WM-032122

First Certified: 11 February 2021

Certification Date: 22 April 2021

Expiry Date: 10 February 2026


CEO, The IAPMO Group

This WaterMark certification is for the period indicated herein and is valid after the date shown above. Any change in material, manufacturing process, marking or design without having first obtained the approval of IAPMO R&T Oceana, or any evidence of non-compliance with applicable Standards, Specifications or of other non-compliance, may be deemed sufficient cause for revocation of this certification. Reproduction of or reference to this certificate for advertising purposes may be made only by specific written permission of IAPMO R&T Oceana. Any alteration of this certificate could be grounds for revocation of this certification.

This certificate is issued by a JAS-ANZ accredited Conformity Assessment Body. The ABCB and JAS-ANZ do not in any way warrant, guarantee or represent that the product the subject of this Certificate conforms to the WaterMark Certification Scheme Rules, nor accept any liability arising out of the use of the product. The ABCB disclaims to the extent permitted by law, all liability (including negligence) for claims of losses, expenses, damages and costs arising as a result of the use of the product(s) referred to in this Certificate.

EUROFLO® RUBBER RINGS

Please refer to the rubber ring installation video on our website

SN4 RUBBER RINGS



SIZE	CODE
160mm OD	520-160-RBR
200mm OD	520-200-RBR
250mm OD	520-250-RBR
315mm OD	520-315-RBR
400mm OD	520-400-RBR
500mm OD	520-500-RBR
630mm OD	520-630-RBR
800mm OD	520-800-RBR
1000mm OD	520-1000-RBR
1200mm OD	520-1200-RBR

SN8/SN16 RUBBER RINGS



SIZE	CODE
250mm OD	560-250-RBR
315mm OD	560-315-RBR
400mm OD	560-400-RBR
500mm OD	560-500-RBR
630mm OD	560-630-RBR
800mm OD	560-800-RBR
1000mm OD	560-1000-RBR
1200mm OD	560-1200-RBR
1300mm OD	560-1300-RBR
1500mm OD	560-1500-RBR
1700mm OD	560-1700-RBR
1900mm OD	560-1900-RBR
2100mm OD	560-2100-RBR

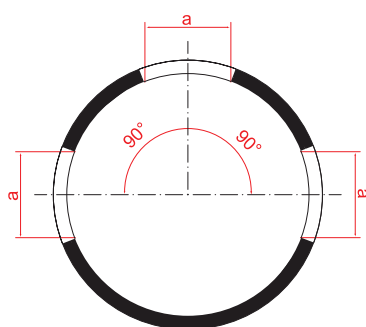


Onsite installation of rubber rings.

EUROFLO® SLOTTED PIPE

- 5.8 metre lengths overall including socket
- Comes with socket on pipe as standard
- SN8 and SN16 pipes slotted to order

PRODUCT CODE	DESCRIPTION	CRATE QTY	NOMINAL BORE (MM)	OUTSIDE DIAMETER (MM)
590-110-5.8M	110mm Slotted Drainage Pipe	67	100	110
590-160-5.8M	160mm Slotted Drainage Pipe	33	150	160
590-200-5.8M	200mm Slotted Drainage Pipe	18	175	200
590-250-5.8M	250mm Slotted Drainage Pipe	11	225	250
590-315-5.8M	315mm Slotted Drainage Pipe	6	300	315
590-400-5.8M	400mm Slotted Drainage Pipe	3	375	400
590-500-5.8M	500mm Slotted Drainage Pipe	2	430	500
590-630-5.8M	630mm Slotted Drainage Pipe	1	525	630
590-800-5.8M	800mm Slotted Drainage Pipe	1	675	800
590-1000-5.8M	1000mm Slotted Drainage Pipe	1	850	1000
590-1200-5.8M	1200mm Slotted Drainage Pipe	1	1050	1200



Standard Pattern
3-5 slots depending on size
Total slotted angle = 240°



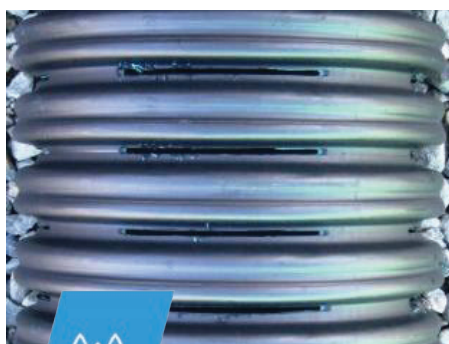
Slotted pipe being installed on farm

EUROFLO® SLOTTED PIPE



FASTER FLOW

The smooth-bottom design and long slots let water flow quickly, reducing the risk of blockages and improving drainage performance.



BETTER DRAINAGE

The self-cleaning long slots are less likely to clog with sediment, keeping your system running smoothly for longer.



STRONGER PERFORMANCE

Rigid lengths make it easier to lay straight drainage lines that perform consistently, even in challenging conditions.

DRONE MAPPING

Maximise your land production by installing EUROFLO® slotted pipe.

Our experts will create a custom drainage plan using comprehensive calculations from data collected by our free drone mapping service.



Distance

Label	Title	Horizontal Length	Surface Length	Slope	Vertical H
1	Drain 1	313.19 m	315.56 m	4.03°, 7.05%	22.12 m
2	Drain 2	250.39 m	254.52 m	3.89°, 6.81%	17.09 m

Area

Label	Title	Area	Surface Area
3	Drain 1 Catchment area	6.04 ha	6.17 ha



EUROFLO® FITTINGS

JOINERS/MANHOLE CONNECTORS



250mm – 500mm



630mm – 1200mm

SIZE	CODE	COMMENT
250mm	521-250	
315mm	521-315	
400mm	521-400	
500mm	521-500	
630mm	521-630	
800mm	521-800	
1000mm	521-1000	
1200mm	521-1200	Only fits the 1200mm SN8 pipe.

REDUCERS



SIZE	CODE	COMMENT
315mm x 250mm	521-315-250	
400mm x 250mm	521-400-250	
400mm x 315mm	521-400-315	
500mm x 400mm	521-500-400	

Note: other sizes can be ordered in

JUNCTIONS



SIZE

CODE

COMMENT

250mm x 45°

521-250-45J

250mm x 90°

521-250-90J

315mm x 45°

521-315-45J

400mm x 45°

521-400-45J

Note: Other fittings can be made to order

SLIP COUPLERS



SIZE

CODE

COMMENT

250mm

521-250SLIP

315mm

521-315SLIP

400mm

521-400SLIP

500mm

521-500SLIP

630mm

521-630SLIP

800mm

521-800SLIP

1000mm

521-1000SLIP

1200mm

521-1200SLIP

Slip Couplers

CAPS



SIZE

CODE

COMMENT

250mm

521-250CAP

315mm

521-315CAP

400mm

521-400CAP

500mm

521-500CAP

630mm

521-630CAP

800mm

521-800CAP

1000mm

521-1000CAP

1200mm

521-1200CAP

BENDS



SIZE	CODE	COMMENT
250mm x 30°	521-250-30	
250mm x 45°	521-250-45	
250mm x 90°	521-250-90	
315mm x 15°	571-315-15	M+F
315mm x 30°	571-315-30	M+F
315mm x 45°	521-315-45	
315mm x 90°	521-315-90	
400mm x 45°	521-400-45	
400mm x 90°	521-400-90	
500mm x 45°	521-500-45	
500mm x 90°	521-500-90	
630mm x 22°	571-630-22	M+F
630mm x 45°	521-630-45	
630mm x 90°	521-630-90	
800mm x 22°	571-800-22	M+F
800mm x 45°	571-800-45	M+F
800mm x 90°	571-800-90	M+F

Note: Other fittings can be made to order. All M+F bends are fabricated.

ACCESSORIES



Tyre Lever



Lubricant

SIZE	CODE	COMMENT
One size	521-TOOL-001	Tyre lever
500gm	OSLU 19210	Lubricant

FABRICATED FITTINGS

We stock a range of standard fittings for EUROFLO® pipe. See what is available in our catalogue online at pandfglobal.com. We also manufacture fittings to order meaning you can choose from a wide range of EUROFLO® fittings to complete your pipeline.

Our fabricated fittings are made in New Zealand out of EUROFLO® pipe and conform to the same standard as the Euroflo pipe.

Fabricated fittings can be made in any size from 160mm to 1200mm. Larger fittings can be made to order.

Lead time on fittings is 10 working days.

Price on application.



500mm 22 degree bend



800mm 88 degree bend

INFORMATION REQUIRED TO FABRICATE YOUR FITTING:

- What is the fitting type? I.e. joiner, junction, bend etc.
- What is the EUROFLO® pipe size (OD)?
- What is the offtake pipe size?
- What is the degree angle?
- Where are sockets required on the fitting?
- Drawings need to be provided



800mm Z bend



1000mm wye junction with a 200mm 45 degree connection



1200mm pipe with a 630mm riser



EUROFLO® GO-IN SYSTEM

COMPONENTS:

1. Holesaw and arbor
2. Sealing ring
3. Sealing adaptor (needed to connect pipes of 160mm and 200mm OD)
4. Sealing adaptor rubber ring gasket (needed to connect smooth PVC or PE pipes of 160mm and 200mm OD)

BENEFITS:

- Branches can be simply installed after main pipe placement
- Extremely cost effective
- Can be installed vertically even when water is flowing
- Fast and user-friendly
- Adaptable for branches of either ribbed PE or smooth PVC

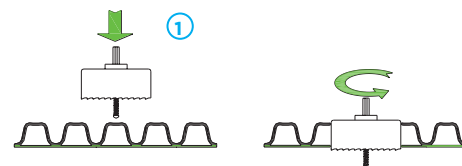
USES:

- Breather pipe connections
- Field drain connections to main drain
- Connections into sumps and galleries



INSTALLATION:

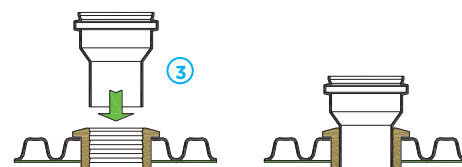
Drill through top centre of corrugation at right angles to pipe axis.



Insert sealing ring fully into hole.

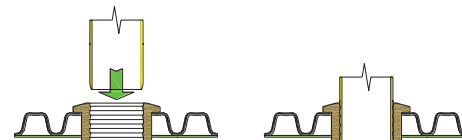


For branch pipes of 160mm and 200mm OD lube inside of sealing ring and insert the sealing adaptor.

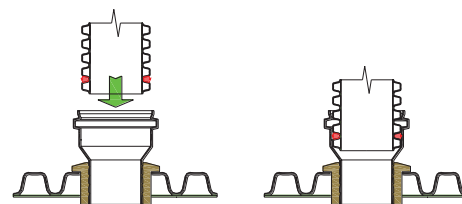


OR

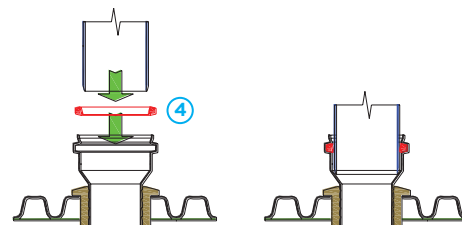
If branch pipe is 110mm OD a sealing adaptor is not needed. Insert branch pipe directly into sealing ring.



For a EUROFLO® branch pipe fit a rubber ring (as for a EUROFLO® pipe line watertight connection), and insert the pipe spigot, with the rubber ring installed, into the sealing adaptor.



For a smooth PVC branch, fit a rubber ring gasket into groove in the sealing adaptor, lubricate the tip of the rubber ring gasket and then insert the branch pipe.



DN OF BRANCH PIPE IN MM

MINIMUM SIZE OF EUROFLO® MAIN PIPE

110mm	315mm
160mm	400mm
200mm	500mm

250mm and 315mm available upon enquiry.

GO-IN SYSTEM FITTINGS

HOLESAW AND ARBOR



SIZE	CODE	COMMENT
110mm OD	521-2431-110	Holesaw Only
110mm	521-2432-11	Arbor for Holesaw
160mm OD	521-2431-160	Holesaw Only
200mm OD	521-2431-200	Holesaw Only
160/200mm	521-2432-16	Arbor for Holesaw

Note: The correct sized holesaw and arbor both need to be purchased
250mm and 315mm available upon enquiry

SEALING RINGS



SIZE	CODE	COMMENT
110mm OD	521-2439-110	Fits DWV or stormwater pipe inside rubber
160mm OD	521-2439-160	Requires sealing adaptor 521-2430-160
200mm OD	521-2439-200	Requires sealing adaptor 521-2430-200

SEALING ADAPTORS



SIZE	CODE	COMMENT
160mm OD	521-2430-160	For use with sealing ring 521-2439-160
200mm OD	521-2430-200	For use with sealing ring 521-2439-200

SEALING ADAPTOR RUBBER RING GASKETS



SIZE	CODE	COMMENT
160mm	521-1301-160	For use when connecting PVC pipe into sealing adaptors
200mm	521-1301-200	

DRAINCOIL FITTINGS

Work with all common draincoil brands

PLAIN JUNCTIONS



SIZE	CODE	BOX QUANTITY	COMMENT
65mm x 45°	D04-65-45		Junction
65mm x 85°	D04-65-88		Junction
110mm x 45°	D04-110-45	16	Junction
110mm x 88°	D04-110-88		Junction
160mm x 110mm x 45°	D04-160-110-45	8	Reducing Junction
160mm x 110mm x 88°	D04-160-110-88		Reducing Junction
160mm x 45°	D04-160-45	8	Junction
160mm x 88°	D04-160-88		Square Junction

DOUBLE JUNCTIONS



SIZE	CODE	COMMENT
110mm x 88°	D06-110-88	Double Junction
160mm x 100mm x 45°	D06-160-110-45	Double Reducing Junction
160mm x 88°	D06-160-88	Double Junction

PLAIN COUPLING

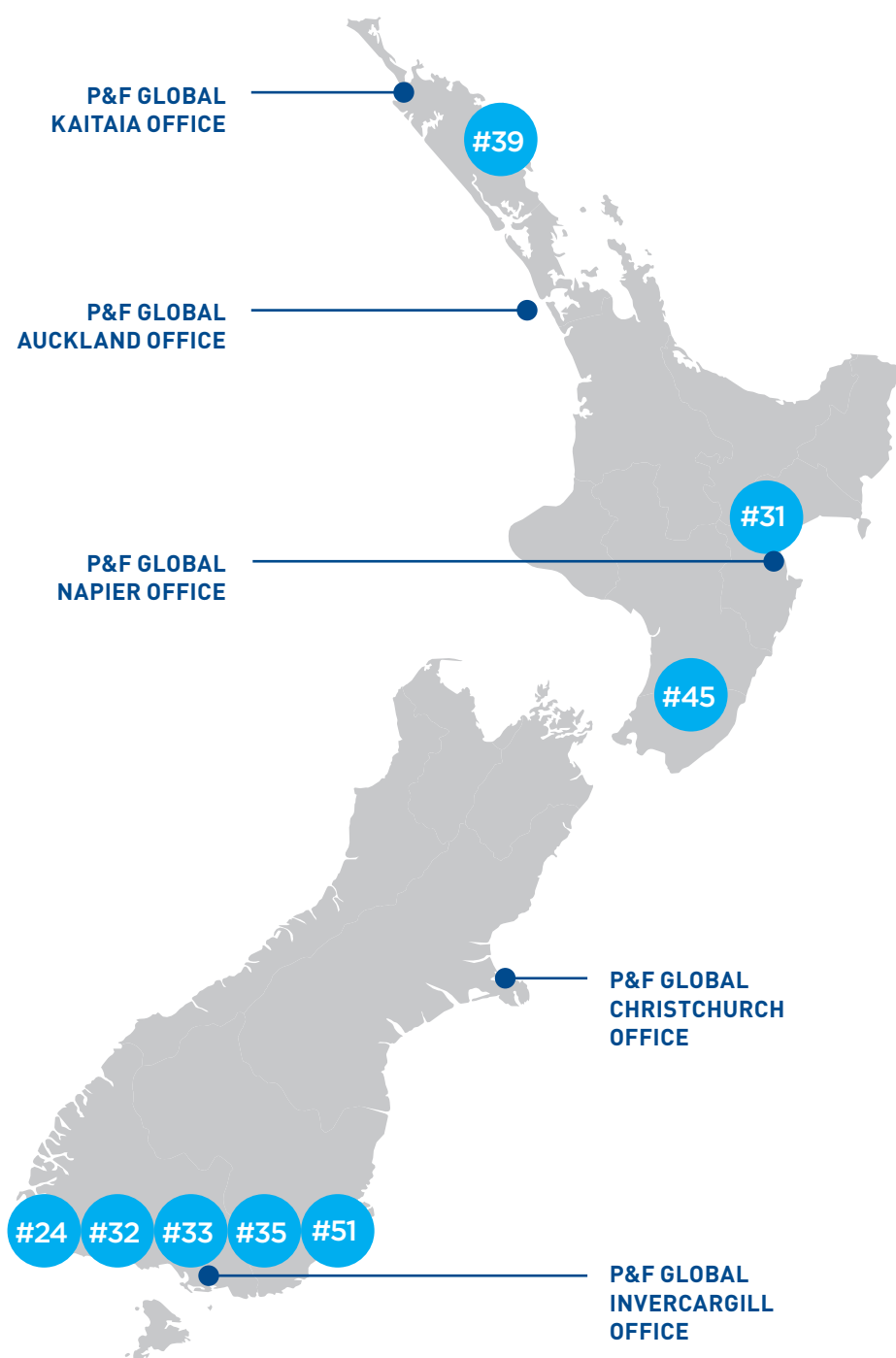


SIZE	CODE	COMMENT
65mm	D10-65	Coupling
110mm	D10-110	Coupling
160mm	D10-160	Coupling

GLOBAL

NOTES:

EUROFLO® RURAL CASE STUDIES



#24

EUROFLO® Rescues Milk Delivery

- TYPE:** Stock crossings
- PROJECT:** Tanker track bridge repair
- PRODUCT:** EUROFLO® 1950mm Culvert Pipe
- WHO:** Waihape Excavating and Drainage



#35

EUROFLO® Simplifies Culvert Replacement In Stream For South Otago Farmer

- TYPE:** Culvert Replacement
- PROJECT:** Replacing old steel culvert in stream to manage flows and flooding
- PRODUCT:** EUROFLO® 1950mm culvert pipe
- WHO:** Toko Mouth farmer Simon Davies, South Otago



EUROFLO® Go-In System Provides Easy Drainage Solution For Commercial Dairy Farm Shed

TYPE: Rainwater drainage

PROJECT: Rainwater drainage for loafing barn

PRODUCT: EUROFLO® Go-In System

WHO: Tukituki Dairy Goats commercial farm



EUROFLO® slotted pipe saves time and delivers better farm drainage

TYPE: Culvert Replacement

PROJECT: Drainage solution to replace earthenware pipes

PRODUCT: EUROFLO® 315mm slotted drainage pipe

WHO: Southland farmer Murray Ballantine



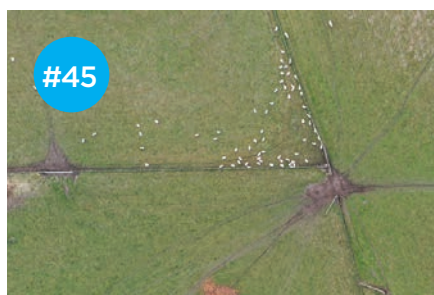
EUROFLO® crossings create access and efficiency on farm

TYPE: Stock Crossings

PROJECT: Installation of stock crossings

PRODUCT: EUROFLO® large bore culvert pipe

WHO: Dairy farmer Hamish Robinson



Drone Service Delivers Smart Future-Proofed Drainage Plan

TYPE: Drone

PROJECT: Drone service and farm drainage plan

PRODUCT: EUROFLO® Go-In System + 200mm, 250mm slotted pipe

WHO: Rayner's Gladstone farm



Gateway pipe the first choice for family-owned Southland company

TYPE: Farm Drainage

PROJECT: Southland company Superior Farm Maintenance

PRODUCT: Gateway PVC culvert pipe

WHO: Superior Farm Maintenance



EUROFLO® helps Northland nursery project flow smoothly

TYPE: Subsurface drainage system

PROJECT: Kauri Park Nurseries

PRODUCT: EUROFLO® Pipe 630mm 800mm

WHO: Kauri Park Nurseries, Reyburn & Bryant, and Clements Contractors

To view technical documents
please visit **www.pandfglobal.com**