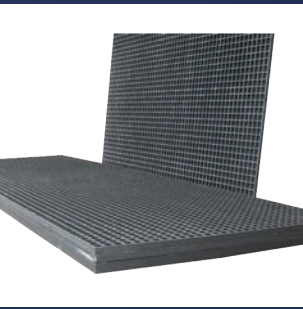


# SECTION G: STORMWATER COLLECTION, PAINT, GLUE AND ACCESSORIES



## STORMWATER COLLECTION

### TOBY BOXES AND COVERS



SIZE	CODE	COMMENT
100mm	40-003	Toby Boxes (Alu)
150mm	40-004	Toby Boxes (Alu)
200mm	40-200	Sump Lids Round (Alu)
250mm	40-250	Sump Lids Round (Alu)
315mm	40-315	Sump Lids Round (Alu)
400mm	40-400	Sump Lids Round (Alu)

### ALUMINIUM GRATINGS



SIZE	CODE	COMMENT
100mm	40-000	Drain Grates 4 inch Round
135mm	40-001	Drain Grates 5 inch Round
150mm	40-002	Drain Grates 6 inch Round
200mm	40-010	Drain Grates 8 inch Round
225mm	40-011	Drain Grates 9 inch Round
200mm	40-201	Sump Grates Round
250mm	40-251	Sump Grates Round
315mm	40-316	Sump Grates Round
400mm	40-401	Sump Grates Round

#### Key

All items are DWV unless noted  
M+F = Male, Female Ends

DWV= Drain Waste and Vent  
F+F= Female, Female Ends

SW= Stormwater  
ADJ= Adjustable

## PITS & SUMPS



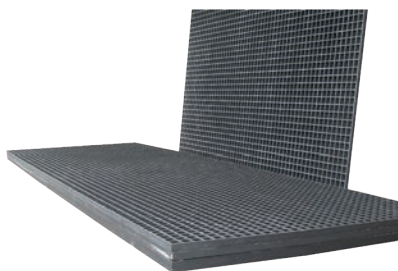
SIZE	CODE	COMMENT	CODE
250mm x 285mm deep	42-200	Poly. Square Base + Aluminium Grate	41-380 40-580
350mm x 315mm deep	42-201	Poly. Square Base + Aluminium Grate	41-930 40-590

## EURO SUMP OR PIT



SIZE	CODE	LOAD RATING	COMMENT
550mm x 550mm	40-301-550		Euro Frame
200mm x 200mm	40-302-200	611kg	Euro Grate
300mm x 300mm	40-302-300	561kg	Euro Grate
400mm x 400mm	40-302-400	510kg	Euro Grate
550mm x 550mm	40-302-550	Pedestrian only	Euro Grate
200mm x 200mm	40-305-200	611kg	Euro Lid
300mm x 300mm	40-305-300	561kg	Euro Lid
400mm x 400mm	40-305-400	510kg	Euro Lid
200mm x 200mm	40-308-200		Euro Base
300mm x 300mm	40-308-300		Euro Base
400mm x 400mm	40-308-400		Euro Base
550mm x 520mm	40-308-550		Euro Base

## FIBREGLASS GRATING



SIZE	CODE	COMMENT
3.660m x 1.220m x 25mm	42-325	Grey Grating Fibre
3.660m x 1.220m x 25mm	42-325GGG	Green grit Grating
3.660m x 1.220m x 38mm	42-338	Grey Grating Fibre
3.660m x 1.220m x 38mm	42-338GGG	Green grit Grating

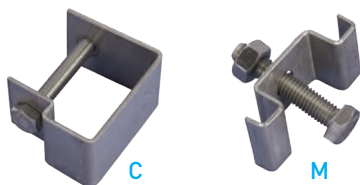
### Key

All items are DWV unless noted  
M+F = Male, Female Ends

DWV= Drain Waste and Vent  
F+F= Female, Female Ends

SW= Stormwater  
ADJ= Adjustable

## CLIPS FOR FIBREGLASS GRATING



SIZE	CODE	COMMENT
38mm	42-301	Fixing Clip Grating C Type
25mm	42-311	Fixing Clip Grating C Type
25mm or 38mm	42-302	Fixing Clip Grating M Type

## SUMP PIPES



SIZE	CODE	COMMENT
200mm x 1000mm	41-200	Round Pipe (PVC)
250mm x 1000mm	41-250	Round Pipe (PVC)
315mm x 1000mm	41-315	Round Pipe (PVC)
315mm x 1000mm	41-315S	Socket End
400mm x 1000mm	41-316	Round Pipe (PVC)

Grate not included. Pipes are white or green.

## OUTLET FLANGES



SIZE	CODE	COMMENT
100mm	42-210	Sump Outlets

### Key

All items are DWV unless noted  
M+F = Male, Female Ends

DWV= Drain Waste and Vent  
F+F= Female, Female Ends

SW= Stormwater  
ADJ= Adjustable

### CHANNEL & GRATE ORIGINAL STYLE

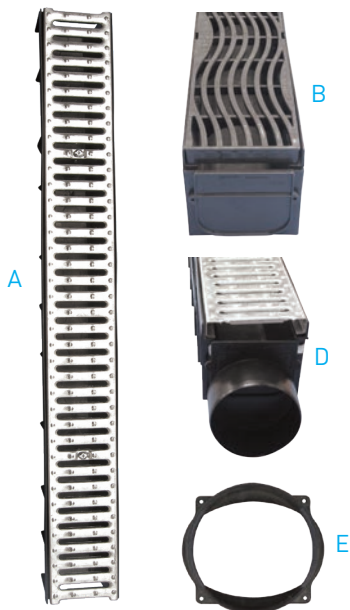


SIZE	CODE	COMMENT
100mm x 1m	43850	Channel & Grate
	43860	Connector
	43865	End Cap
	43870	Corner

#### A15 RATED

Light residential, garage entrances, doorway, pedestrian areas

### CHANNEL & GRATE EURO STYLE



SIZE	CODE	COMMENT
A 100mm x 1m	43950-1M	Channel and Galv Steel Grate
B 100mm x 1m	43960-1M	Channel and PE-HD Grate
C	43970	Closed end cap
D 100mm	43972	End Cap Outlet
E 100mm	43974	Vertical Outlet

#### A15 RATED

Light residential, garage entrances, doorway, pedestrian areas

#### Key

All items are DWV unless noted  
M+F = Male, Female Ends

DWV= Drain Waste and Vent  
F+F= Female, Female Ends

SW= Stormwater  
ADJ= Adjustable

## ACCESSORIES

### FILTER CLOTH



SIZE	CODE	COMMENT
600mm x 50m	43-506	Filter Cloth
2m x 50m	44-240	Filter Cloth AS240
4m x 50m	48-140	Filter Cloth AS240
4m x 100m	48-240	Filter Cloth AS240*
4m x 100m	48-280	Filter Cloth AS280*

### FILTER SOCK ON APPLICATOR



SIZE	CODE	COMMENT
110mm x 30m	43-607	Filter Sock on Applicator
110mm x 50m	43-608	Filter Sock on Applicator
110mm x 100m	43-609	Filter Sock on Applicator

#### Key

All items are DWV unless noted  
M+F = Male, Female Ends

DWV= Drain Waste and Vent  
F+F= Female, Female Ends

SW= Stormwater  
ADJ= Adjustable

# FLEXIBLE FLUMING

## FLUMING



SIZE	CODE	TO FIT OUTSIDE DIAMETER	FITS EUROFLO® PIPE OD
225mm	FLUM225/M	285mm	250mm
300mm	FLUM300/M	370mm	315mm
375mm	FLUM375/M	445mm	400mm
450mm	FLUM450/M	535mm	500mm
525mm	FLUM525/M	620mm	630mm
600mm	FLUM600/M	715mm	800mm

Note: this is made to order

## STAINLESS STEEL STRAP



SIZE	CODE	FITS EUROFLO® PIPE OD	COMMENT
225mm	FLUMSS225	250mm	
300mm	FLUMSS300	315mm	
375mm	FLUMSS375	400mm	
450mm	FLUMSS450	500mm	
525mm	FLUMSS525	630mm	
600mm	FLUMSS600	800mm	

Note: straps are sold individually

### FEATURES AND BENEFITS

- Constructed from a durable PVC fabric
- Preserves embankments by directing discharge from culverts to desired outlet
- Available to fit 100-900mm concrete, plastic or steel pipe
- Customised sizes available
- Double or single cleat options
- Reinforced top edge to reduce fatigue damage to the fluming from the culvert edge
- Available with a unique anti-seal plastic core to prevent adhesion of the two surfaces during dry weather
- Stainless steel clamps also available



### Key

All items are DWV unless noted  
M+F = Male, Female Ends

DWV= Drain Waste and Vent  
F+F= Female, Female Ends

SW= Stormwater  
ADJ= Adjustable

## GLUE

### SOLVENT CEMENT



SIZE	CODE	BOX QUANTITY	COLOUR	COMMENT
250ml	C250	N/A	Clear	Cleaner/Primer, no dye included
500ml	C500	24	Red	Cleaner/Primer, + dye + roller
4 litre	C4000	4	Red	Cleaner/Primer, + dye
125ml	GP125	N/A	Green	Pressure Cement + Brush
250ml	GP250	N/A	Green	Pressure Cement + Brush
500ml	GP500	24	Clear	Pressure Cement + Brush
4 litre	GP4000	4	Clear	Pressure Cement
500ml	G500	24	Clear	Solvent Cement + Brush
4 litre	G4000	4	Clear	Solvent Cement
237ml	HG250	N/A	Clear	Hot Cement + Brush
473ml	HG500	N/A	Clear	Hot Cement + Brush

### LUBE



SIZE	CODE	COMMENT
500gm	OSLU19210	Tube of Lube

#### Key

All items are DWV unless noted  
M+F = Male, Female Ends

DWV= Drain Waste and Vent  
F+F= Female, Female Ends

SW= Stormwater  
ADJ= Adjustable

# PAINT

## AEROSOL PAINT



SIZE	CODE	COMMENT
400ml	M1806	Plain White (Inverted)
400ml	M1811	Fluro Red (Inverted)
400ml	M1812	Fluro Blue (Inverted)
400ml	M1813	Fluro Orange (Inverted)
400ml	M1814	Fluro Pink (Inverted)
400ml	M1815	Fluro Green (Inverted)
400ml	M1817	Fluro Purple (Inverted)
600ml	M2805	Plain Yellow (Inverted) Permanent Line Marking Paint
600ml	M2806	Plain White (Inverted) Permanent Line Marking Paint
600ml	M2808	Plain Black (Inverted) Permanent Line Marking Paint

12 cans per box.  
Only sold in box quantities.

## AEROSOL PAINT APPLICATORS



SIZE	CODE	COMMENT
500mm Long	M1500	Spotting Pistol
600mm Long	M1500L	Spotting Pistol
700mm Long	M1500XL	Spotting Pistol

Note: For use with aerosol paint, also suits Ultra Colour and Signet.

### Key

All items are DWV unless noted  
M+F = Male, Female Ends

DWV= Drain Waste and Vent  
F+F= Female, Female Ends

SW= Stormwater  
ADJ= Adjustable

## FLEXIBLE CONNECTORS

### FLEXIBLE CONNECTORS



RANGE	CODE	COMMENT
138-142mm / 101-116mm	1006-44	PVC to Earthenware
192-197mm / 152-167mm	1006-66	PVC to Earthenware
268-284mm/241-257mm	1051-1010	PVC to Earthenware
339-368mm/301-320mm	1002-1212	PVC to Earthenware
440-452mm/370-383mm	1002-1515	PVC to Earthenware
110-123mm/100-113mm	1051-44	PVC to Asbestos cement
164-178mm/149-164mm	1051-66	PVC to Asbestos cement
36-45mm	1056-150	PVC to PVC
47-56mm	1056-22	PVC to PVC
61-70mm	1060-22	PVC to PVC
75-84mm	1056-33	PVC to PVC
100-113mm/75-86mm	1056-43	PVC to PVC
101-116mm	1056-44	PVC to PVC
160-171mm/104-116mm	1056-64	PVC to PVC
155-165mm	1056-66	PVC to PVC
183-194mm	1056-88	PVC to PVC
240-256mm	1056-1010	PVC to PVC
299-317mm	1004-1212	PVC to PVC

#### Key

All items are DWV unless noted  
M+F = Male, Female Ends

DWV= Drain Waste and Vent  
F+F= Female, Female Ends

SW= Stormwater  
ADJ= Adjustable



To view technical documents  
please visit [www.pandfglobal.com](http://www.pandfglobal.com)