

PRODUCT CATALOGUE

0800 99 77 33
sales@pandfglobal.com
www.pandfglobal.com



DWV AND STORMWATER SYSTEMS

PAGES 01-24



A

DOWNPIPE AND FITTINGS

PAGES 25-36



B

PVC PRESSURE SYSTEMS

PAGES 37-52



C

GATEWAY CULVERT PIPE

PAGES 53-60



D

EUROFLO® PIPE

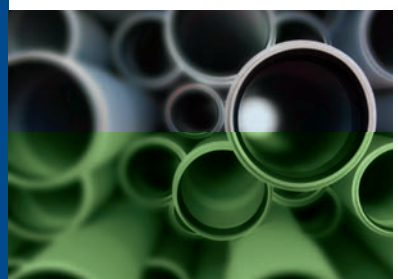
PAGES 61-82



E

COMMERCIAL WASTE

PAGES 83-96



F

STORMWATER COLLECTION, PAINT, GLUE AND ACCESSORIES

PAGES 97-108



G

SECTION A: DWV AND STORMWATER SYSTEMS



FITTINGS

PLAIN BEND F+F



SIZE	CODE	BOX QUANTITY	COMMENT
32mm x 15°	101-32-15		
32mm x 45°	101-32-45	80	
32mm x 88°	101-32-88	140	
40mm x 15°	101-40-15	50	
40mm x 45°	101-40-45	130	
40mm x 88°	101-40-88	100	
50mm x 15°	101-50-15	60	
50mm x 45°	101-50-45	70	
50mm x 88°	101-50-88	50	
65mm x 15°	101-65-15		
65mm x 45°	101-65-45		
65mm x 88°	101-65-88		
80mm x 15°	101-80-15		
80mm x 45°	101-80-45		
80mm x 88°	101-80-88		
90mm x 15°	701-90-15	120	SW
90mm x 22°	701-90-22	120	SW
90mm x 45°	701-90-45	100	SW
90mm x 88°	701-90-88	70	SW
100mm x 5°	101-100-05	60	
100mm x 11°	101-100-11	60	
100mm x 15°	101-100-15	56	
100mm x 22°	101-100-22	40	
100mm x 30°	101-100-30	42	
100mm x 45°	101-100-45	40	
100mm x 60°	101-100-60	30	
100mm x 88°	101-100-88	26	
100mm x 88°	101-100-88W		Inspection Bend
150mm x 15°	101-150-15	18	
150mm x 45°	101-150-45	12	
150mm x 45°	701-150-45		SW
150mm x 88°	101-150-88	6	
150mm x 88°	701-150-88	10	SW
175mm x 15°	701-175-15		SW

Key

All items are DWV unless noted
M+F = Male, Female Ends

DWV= Drain Waste and Vent
F+F= Female, Female Ends

SW= Stormwater
ADJ= Adjustable

175mm x 45°	701-175-45	SW
175mm x 88°	701-175-88	SW
225mm x 15°	701-225-15	SW
225mm x 45°	101-225-45	
225mm x 45°	701-225-45	SW
225mm x 88°	101-225-88	
225mm x 88°	701-225-88	SW
300mm x 45°	701-300-45	SW
300mm x 88°	701-300-88	SW
375mm x 45°	701-375-45	SW
375mm x 88°	701-375-88	SW

PLAIN BEND M+F



SIZE	CODE	BOX QUANTITY	COMMENT
40mm x 45°	171-40-45	60	
40mm x 88°	171-40-88	100	
40mm x 88°	178-40-88		In to Pipe
50mm x 40mm x 45°	171-50-40-45		M+F Reducing Bend
50mm x 45°	171-50-45	80	
50mm x 88°	171-50-88	50	
50mm x 88°	178-50-88		In to Pipe
65mm x 45°	171-65-45	35	
65mm x 88°	171-65-88	12	
80mm x 45°	171-80-45		
90mm x 45°	771-90-45	100	SW
100mm x 5°	171-100-05	18	
100mm x 11°	171-100-11	65	
100mm x 15°	171-100-15	60	
100mm x 22°	171-100-22	60	
100mm x 30°	171-100-30	45	
100mm x 45°	171-100-45	45	
100mm x 60°	171-100-60	16	
100mm x 88°	171-100-88	30	
100mm x 88°	171-100-88T		Tight Radius
150mm x 15°	171-150-15	18	
150mm x 45°	171-150-45	12	
150mm x 88°	171-150-88	9	

Key

All items are DWV unless noted
M+F = Male, Female Ends

DWV= Drain Waste and Vent
F+F= Female, Female Ends

SW= Stormwater
ADJ= Adjustable

REAR ACCESS BEND



SIZE	CODE	BOX QUANTITY	COMMENT
100mm x 88°	102-100-88		
150mm x 88°	102-150-88		

ACCESS BENDS



SIZE	CODE	BOX QUANTITY	COMMENT
100mm x 45°	103-100-45	18	100mm inspection
100mm x 88°	103-100-88	18	100mm inspection

Key

All items are DWV unless noted
M+F = Male, Female Ends

DWV= Drain Waste and Vent
F+F= Female, Female Ends

SW= Stormwater
ADJ= Adjustable

PLAIN JUNCTIONS



104 codes 45° junction



104 codes 88° junction



704 codes 45° junction



704 codes 88° junction

SIZE	CODE	BOX QUANTITY	COMMENT
32mm x 45°	104-32-45		
32mm x 88°	104-32-88	36	
40mm x 45°	104-40-45	40	
40mm x 88°	104-40-88	60	
50mm x 45°	104-50-45	32	
50mm x 88°	104-50-88	30	
65mm x 45°	104-65-45	30	
65mm x 88°	104-65-88	15	
80mm x 45°	104-80-45	15	
80mm x 88°	104-80-88	15	
90mm x 45°	704-90-45	36	SW Threaded ends
90mm x 88°	704-90-88	24	SW Threaded ends
100mm x 45°	104-100-45	16	
100mm x 45°	104-100-45U	16	Unthreaded End
100mm x 88°	104-100-88	20	Threaded ends
100mm x 45°	174-100-45	16	M+F
100mm x 88°	174-100-88	16	M+F
150mm x 45°	104-150-45	4	
150mm x 45°	704-150-45	6	SW
150mm x 88°	104-150-88	6	
150mm x 88°	704-150-88	6	SW
175mm x 45°	704-175-45		SW
175mm x 88°	704-175-88		SW
225mm x 45°	104-225-45		
225mm x 45°	704-225-45		SW
225mm x 88°	704-225-88		SW
300mm x 45°	704-300-45		SW
300mm x 88°	704-300-88		SW

Key

All items are DWV unless noted
M+F = Male, Female Ends

DWV= Drain Waste and Vent
F+F= Female, Female Ends

SW= Stormwater
ADJ= Adjustable

REDUCING JUNCTIONS



45° reducing junction



88° reducing junction

SIZE	CODE	BOX QUANTITY	COMMENT
100mm x 50mm x 45°	104-100-50-45	26	
100mm x 50mm x 88°	104-100-50-88	16	
100mm x 65mm x 45°	104-100-65-45	24	
150mm x 100mm x 45°	104-150-100-45	8	
150mm x 100mm x 88°	104-150-100-88		
150mm x 100mm x 45°	174-150-100-45		M+F
150mm x 100mm x 45°	704-150-100-45	8	SW
150mm x 100mm x 88°	704-150-100-88	10	SW
175mm x 100mm x 45°	704-175-100-45		SW
175mm x 150mm x 45°	704-175-150-45		SW
175mm x 150mm x 88°	704-175-150-88		SW
225mm x 100mm x 45°	704-225-100-45		SW
225mm x 100mm x 88°	704-225-100-88		SW
225mm x 150mm x 45°	704-225-150-45		SW
225mm x 150mm x 88°	704-225-150-88		SW
225mm x 175mm x 45°	704-225-175-45		SW
300mm x 150mm x 45°	704-300-150-45		SW
300mm x 225mm x 45°	704-300-225-45		SW

Key

All items are DWV unless noted
M+F = Male, Female Ends

DWV= Drain Waste and Vent
F+F= Female, Female Ends

SW= Stormwater
ADJ= Adjustable

ACCESS JUNCTIONS



SIZE	CODE	BOX QUANTITY	COMMENT
100mm x 45°LH	105-100-45LH	12	100mm inspection
100mm x 45°RH	105-100-45RH	12	100mm inspection
100mm x 88°	105-100-88	12	100mm inspection, rear access

DOUBLE JUNCTIONS



SIZE	CODE	BOX QUANTITY	COMMENT
100mm x 88°	706-100-88		SW

Key

All items are DWV unless noted
M+F = Male, Female Ends

DWV= Drain Waste and Vent
F+F= Female, Female Ends

SW= Stormwater
ADJ= Adjustable

PLAIN COUPLINGS



Threaded and SW couplings



110-100U and all sizes
80mm and below.

SIZE	CODE	BOX QUANTITY	COMMENT
32mm	110-32	120	
40mm	110-40	80	
50mm	110-50	70	
65mm	110-65	24	
80mm	110-80	36	
90mm	710-90	50	SW Threaded
100mm	110-100T	60	Threaded
100mm	110-100U	60	
150mm	110-150T	18	Threaded
150mm	710-150	12	SW
175mm	710-175		SW
225mm	710-225		SW
300mm	710-300		SW
375mm	710-375		SW, Green

SLIP COUPLINGS



711S-90



Green fittings



1511S fittings

SIZE	CODE	BOX QUANTITY	COMMENT
90mm	711S-90	120	SW Glued
100mm	1511S-100		
150mm	1511S-150		
175mm	711S-175		Green
225mm	711S-225		Green
300mm	711S-300		Green

Key

All items are DWV unless noted
M+F = Male, Female Ends

DWV= Drain Waste and Vent
F+F= Female, Female Ends

SW= Stormwater
ADJ= Adjustable

QUICK REPAIR COUPLINGS



SIZE	CODE	BOX QUANTITY	COMMENT
100mm	115-100		
150mm	115-150		

BSP THREAD TO PVC SOCKET



Female Thread Male Thread

SIZE	CODE	BOX QUANTITY	COMMENT
32mm	112-32	40	Female Thread
40mm	112-40	75	Female Thread
50mm	112-50	48	Female Thread
32mm	113-32	40	Male Thread
40mm	113-40	75	Male Thread
50mm	113-50	48	Male Thread

CLAMP SADDLE



SIZE	CODE	BOX QUANTITY	COMMENT
100mm x 50mm	119-100-50	42	Strap Boss

Key

All items are DWV unless noted
M+F = Male, Female Ends

DWV= Drain Waste and Vent
F+F= Female, Female Ends

SW= Stormwater
ADJ= Adjustable

LEVEL INVERTS



M+F Invert



F+F Invert

SIZE	CODE	BOX QUANTITY	COMMENT
40mm x 32mm	123-40-32		M+F
50mm x 40mm	123-50-40	75	M+F
65mm x 40mm	123-65-40	44	M+F
65mm x 50mm	123-65-50	44	M+F
80mm x 50mm	123-80-50	24	M+F
80mm x 65mm	123-80-65	24	M+F
100mm x 50mm	123-100-50	32	M+F
100mm x 65mm	123-100-65	40	M+F
100mm x 80mm	123-100-80	45	M+F
150mm x 100mm	123-150-100	12	M+F
175mm x 100mm	723-175-100		F+F SW
175mm x 150mm	723-175-150		F+F SW
225mm x 150mm	723-225-150M		M+F SW
225mm x 150mm	723-225-150		F+F SW
225mm x 175mm	723-225-175		F+F SW
300mm x 150mm	723-300-150M		M+F SW
300mm x 175mm	723-300-175		F+F SW
300mm x 225mm	723-300-225		F+F SW
300mm x 225mm	723-300-225M		M+F SW

DOWNPIPE ADAPTORS



725-100 Adaptors



725-80 and 725-90 Adaptors



724-90-100

SIZE	CODE	BOX QUANTITY	COMMENT
80mm-65mm	725-80-65		
90mm-65mm	725-90-65		
90mm-80mm	725-90-80		
100mm-65mm	725-100-65		
100mm-80mm	725-100-80		
100mm-90mm	725-100-90		
90mm-100mm	724-90-100		For 100mm Alloy Grate
100mm-100mm	725-100		Fits 135mm Grate

Key

All items are DWV unless noted
M+F = Male, Female Ends

DWV= Drain Waste and Vent
F+F= Female, Female Ends

SW= Stormwater
ADJ= Adjustable

SOCKET REDUCERS



SIZE	CODE	BOX QUANTITY	COMMENT
40mm x 32mm	124-40-32	50	All of these go inside socket
50mm x 40mm	124-50-40	120	
65mm x 40mm	124-65-40	66	
65mm x 50mm	124-65-50	63	
80mm x 50mm	124-80-50	66	
80mm x 65mm	124-80-65		
100mm x 40mm	124-100-40		
100mm x 50mm	124-100-50		
100mm x 65mm	124-100-65		
100mm x 80mm	124-100-80	14	
100mm x 90mm	724-100-90		SW
150mm x 100mm	724-150-100		SW
175mm x 150mm	724-175-150		SW

PIPE REDUCERS



SIZE	CODE	BOX QUANTITY	COMMENT
50mm x 40mm	198-50-40	120	All of these go inside pipe
65mm x 50mm	198-65-50	100	
100mm x 40mm	198-100-40	45	
100mm x 50mm	198-100-50	40	
100mm x 65mm	198-100-65	18	
100mm x 90mm	798-100-90		SW

Key

All items are DWV unless noted
M+F = Male, Female Ends

DWV= Drain Waste and Vent
F+F= Female, Female Ends

SW= Stormwater
ADJ= Adjustable

EARTHEN WARE ADAPTORS



125-100



126 codes



725-225



726-225

SIZE	CODE	BOX QUANTITY	COMMENT
100mm	125-100	16	To fit over EW Pipe F+F
100mm	126-100		To fit into EW Pipe
150mm	126-150		To fit into EW Pipe
225mm	725-225		SW To fit over EW Pipe
225mm	726-225		SW To fit into EW Pipe

PAN COLLAR



SIZE	CODE	BOX QUANTITY	COMMENT
100mm	127-100	4	
100mm	128-100	4	Offset

ACCESS/INSPECTION PIPE



SIZE	CODE	BOX QUANTITY	COMMENT
100mm	129-100	20	
100mm	129-100C		No Screw Cap, Septic Tee
150mm	129-150	6	
100mm	179-100		M+F
175mm	729-175		SW. Not suitable for constant head of water

Key

All items are DWV unless noted
M+F = Male, Female Ends

DWV= Drain Waste and Vent
F+F= Female, Female Ends

SW= Stormwater
ADJ= Adjustable

INLINE VALVE



SIZE	CODE	COMMENT
100mm	795-100	SW Reflux
150mm	795-150	SW Reflux

FLASHING CONE



SIZE	CODE	COMMENT
40mm	131-40	
50mm	131-50	

VENT COWL



SIZE	CODE	BOX QUANTITY	COMMENT
50mm	150-50-40	60	40mm or 50mm
65mm	150-65		
80mm	150-80	24	
100mm	150-100		

Key

All items are DWV unless noted
M+F = Male, Female Ends

DWV= Drain Waste and Vent
F+F= Female, Female Ends

SW= Stormwater
ADJ= Adjustable

ACCESS CAP AND BASE



90mm and below



175mm and above



100 and 150mm

SIZE	CODE	COMMENT
32mm	136-32	
40mm	136-40	
50mm	136-50	
80mm	136-80	
90mm	736-90	SW. Rubber not included
100mm	136-100	
150mm	136-150	
175mm	736-175	SW
225mm	736-225	SW
300mm	736-300	SW. Not stocked

SCREW CAPS



SIZE	CODE	BOX QUANTITY	COMMENT
90mm	736C-90	40	SW. Rubber not included
100mm	136C-100	60	
150mm	136C-150		

PUSH ON CAPS



SIZE	CODE	BOX QUANTITY	COMMENT
32mm	137-32		
40mm	137-40	100	
50mm	137-50	50	
65mm	137-65	70	
80mm	137-80	50	
90mm	737-90	50	SW
100mm	137-100	60	
100mm	137B-100		Dust Cap
150mm	137-150	20	
175mm	737-175		SW Terracotta colour
225mm	737-225		SW
300mm	737-300		SW
375mm	737-375		SW Terracotta colour

Key

All items are DWV unless noted
M+F = Male, Female Ends

DWV= Drain Waste and Vent
F+F= Female, Female Ends

SW= Stormwater
ADJ= Adjustable

METAL CLIPS



SIZE	CODE	BOX QUANTITY	COMMENT
------	------	--------------	---------

90mm	145-90	50	White Stand Off from Wall Clip
------	--------	----	--------------------------------

PLASTIC CLIPS



50mm and below

SIZE	CODE	BOX QUANTITY	COMMENT
------	------	--------------	---------

32mm	140-32		
40mm	140-40	120	
50mm	140-50	100	
80mm	140-80S		Stand Off
100mm	140-100		
100mm	140-100S		Stand Off



Stand off



140-100

BOLTED TRAP SCREW



SIZE	CODE	COMMENT
------	------	---------

100mm	160-100	
150mm	160-150	

Key

All items are DWV unless noted
M+F = Male, Female Ends

DWV= Drain Waste and Vent
F+F= Female, Female Ends

SW= Stormwater
ADJ= Adjustable

HOLDERBATS



SIZE	CODE	BOX QUANTITY	COMMENT
65mm	140A-65		Adjustable Aluminium Holderbat
80mm	140A-80		
90mm	140A-90		
100mm	140A-100	50	
150mm	140A-150	100	
175mm	140A-175		
225mm	140A-225		
300mm	140A-300		

MUNZING RING



SIZE	CODE	BOX QUANTITY	COMMENT
80mm	142-80		Two Piece Zinc Plated Munzing Ring
100mm	142-100		
150mm	142-150	40	
175mm	142-175		
225mm	142-225		
300mm	142-300		Not stocked
10mm x 1m	142-Rod		Threaded Rod Zinc
	142W-Base		Welded Zinc Base Plate

Key

All items are DWV unless noted
M+F = Male, Female Ends

DWV= Drain Waste and Vent
F+F= Female, Female Ends

SW= Stormwater
ADJ= Adjustable

GULLY TRAPS



SIZE	CODE	BOX QUANTITY	COMMENT
80mm x 50mm	158-80-50	10	ADJ
80mm x 65mm	158-80-65	8	ADJ
100mm x 50mm	159-100-50		ADJ
100mm x 65mm	159-100-65		ADJ
100mm	159-100	15	ADJ

GULLY DISH AND LID



SIZE	CODE	BOX QUANTITY	COMMENT
100mm	1575-100	12	
100mm	1575L-100		Gully lids only

GULLY DISH EXTENSION



SIZE	CODE	COMMENT
100mm	176-100-100	
200mm	176-100-200	Also known as risers
300mm	176-100-300	

KERB OUTLETS



SIZE	CODE	COMMENT
100mm	165-100	

Key

All items are DWV unless noted
M+F = Male, Female Ends

DWV= Drain Waste and Vent
F+F= Female, Female Ends

SW= Stormwater
ADJ= Adjustable

FINISHING COLLAR & GRATE



SIZE	CODE	BOX QUANTITY	COMMENT
100mm	168-100D	48	DWV Dome Grate
100mm	168-100G		Flat Grate
100mm	168-100C	90	Finishing Collar
100mm	168-100		Finishing Collar with Grate

RISERS



SIZE	CODE	BOX QUANTITY	COMMENT
80mm	174-80-5444-88		4 way
100mm	174-100-5554-88	10	4 way

FLAP VALVES



758 codes



150-50VT

SIZE	CODE	BOX QUANTITY	COMMENT
50mm	150-50VT	40	Vermin Trap
100mm	758-100	8	SW
150mm	758-150		SW
175mm	758-175		SW
225mm	758-225		SW
300mm	758-300		SW

Key

All items are DWV unless noted
M+F = Male, Female Ends

DWV= Drain Waste and Vent
F+F= Female, Female Ends

SW= Stormwater
ADJ= Adjustable

FRESH AIR INLET



SIZE	CODE	COMMENT
100mm	1516-100	

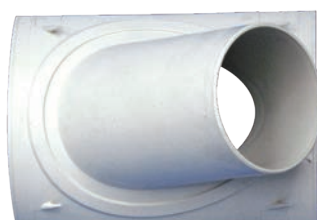
SLAB REPAIR COUPLING



SIZE	CODE	BOX QUANTITY	COMMENT
40mm	178-40		Large end is a socket
50mm	178-50		Large end is a socket
65mm	178-65		Large end is a socket
80mm	178-80		Large end is a socket
100mm	178-100	36	Large end is a socket
100mm	178-100P	36	Large end is a pipe
150mm	178-150	14	Large end is a socket

NOTE: The small end fits inside the pipe, the large end goes inside the pipe socket.

SADDLES



SIZE	CODE	COMMENT
150mm x 100mm	SAD150-100	Comes in 45 degree. Most sizes are injection moulded.
175mm x 100mm	SAD175-100	
175mm x 150mm	SAD175-150	
225mm x 100mm	SAD225-100I	
225mm x 150mm	SAD225-150I	
300mm x 100mm	SAD300-100I	
300mm x 150mm	SAD300-150I	
375mm x 100mm	SAD375-100I	
375mm x 150mm	SAD375-150I	

Key

All items are DWV unless noted
M+F = Male, Female Ends

DWV= Drain Waste and Vent
F+F= Female, Female Ends

SW= Stormwater
ADJ= Adjustable

SPLITTER BOXES



SIZE	CODE	COMMENT
100mm x 100mm x 100mm outlets	43-710	Splitterbox
150mm x 150mm x 150mm outlets	43-712	Splitterbox. Not stocked
175mm x 175mm x 175mm outlets	43-714	Splitterbox. Not stocked
225mm x 225mm x 225mm outlets	43-716	Splitterbox. Not stocked

SLIDE VALVES



SIZE	CODE	COMMENT
100mm	620-100	Watertight
150mm	620-150	Watertight

Key

All items are DWV unless noted
M+F = Male, Female Ends

DWV= Drain Waste and Vent
F+F= Female, Female Ends

SW= Stormwater
ADJ= Adjustable

PIPE

DWV PIPE SOLID WALL

- Made to AS/NZS 1260
- 6 metre lengths
- Solvent joint



PRODUCT CODE	DESCRIPTION	SN RATING	CRATE QTY	NOMINAL SIZE (MM)	OUTSIDE DIAMETER (MM)
100-32-6MI	32mm DWV Pipe Solid Wall	N/A		32	36
100-40-6MI	40mm DWV Pipe Solid Wall	N/A	140	40	43
100-50-6MI	50mm DWV Pipe Solid Wall	N/A	78	50	56
100-65-6MI	65mm DWV Pipe Solid Wall	N/A	53	65	69
100-80-6MI	80mm DWV Pipe Solid Wall	N/A	69	80	83
100-100-6MI	100mm DWV Pipe Solid Wall	SN6	67	100	110
100-150-6MI	150mm DWV Pipe Solid Wall	SN4	33	150	160
100-175-6MI	175mm DWV Pipe Solid Wall	SN4	18	175	200
100-225-6MI	225mm DWV Pipe Solid Wall	SN4	11	225	250

DWV PIPE 1-METRE LENGTHS

- Made to AS/NZS 1260
- Solid wall construction



PRODUCT CODE	DESCRIPTION	NOMINAL SIZE (MM)	OUTSIDE DIAMETER (MM)
100-32-1M	32mm DWV Pipe	32	36
100-40-1M	40mm DWV Pipe	40	43
100-50-1M	50mm DWV Pipe	50	56

Key

All items are DWV unless noted
M+F = Male, Female Ends

DWV= Drain Waste and Vent
F+F= Female, Female Ends

SW= Stormwater
ADJ= Adjustable

STORM WATER PIPE

- Made to AS/NZS 1254
- 6 metre lengths
- Solvent joint
- Solid wall construction



PRODUCT CODE	DESCRIPTION	SN RATING	CRATE QTY	NOMINAL SIZE (MM)	OUTSIDE DIAMETER (MM)
700-90-6MI	90mm Stormwater Pipe Solid Wall	SN4	63	90	92
700-150-6MI	150mm Stormwater Pipe Solid Wall	SN2	33	150	160
700-175-6MI	175mm Stormwater Pipe Solid Wall	SN2	18	175	200
700-225-6MI	225mm Stormwater Pipe Solid Wall	SN2	11	225	250
700-300-6MI	300mm Stormwater Pipe Solid Wall	SN2	6	300	315

Key

All items are DWV unless noted
M+F = Male, Female Ends

DWV= Drain Waste and Vent
F+F= Female, Female Ends

SW= Stormwater
ADJ= Adjustable

METRIC CONVERSION TABLE

Metric	Imperial	Applications
15mm	1/2"	Pressure
20mm	3/4"	Pressure
25mm	1"	Pressure
32mm	1 1/4"	Pressure, DWV
40mm	1 1/2"	Pressure, DWV
50mm	2"	Pressure, DWV
65mm	2 1/2"	Pressure, DWV
80mm	3"	Pressure, DWV
100mm	4"	Pressure, DWV, Stormwater
150mm	6"	Pressure, DWV, Stormwater
175mm	8"	DWV, Stormwater
225mm	10"	DWV, Stormwater
315mm	12"	DWV, Stormwater

Key

All items are DWV unless noted
M+F = Male, Female Ends

DWV= Drain Waste and Vent
F+F= Female, Female Ends

SW= Stormwater
ADJ= Adjustable

To view technical documents
please visit **www.pandfglobal.com**

SECTION B: DOWNPIPE AND FITTINGS



RAINWATER SYSTEMS

DOWNPIPE



SIZE	CODE	CRATE QTY	COMMENT
65mm x 3m	RP65-3MI	53	OD = 67mm
80mm x 3m	RP80-3MI	58	OD = 81mm

BENDS



SIZE	CODE	BOX QUANTITY	COMMENT
80mm x 95°	RPB 80-2	50	F+F
80mm x 112°	RPB 80-3		F+F

DOWNPIPE DROPPERS



SIZE	CODE	COMMENT
65mm	PD 65	Plastic
80mm	PD 80	Plastic
90mm	PD 90	Plastic
100mm	PD 100	Plastic
150mm	PD 150	Plastic

Key

All items are DWV unless noted
M+F = Male, Female Ends

DWV= Drain Waste and Vent
F+F= Female, Female Ends

SW= Stormwater
ADJ= Adjustable

CLIPS



SIZE	CODE	COMMENT
80mm	RPC 80	Plastic

HOLDERBATS



SIZE	CODE	COMMENT
65mm	140A-65	Adjustable Aluminium Holderbat See Back Cover for More Detail
80mm	140A-80	
90mm	140A-90	
100mm	140A-100	
150mm	140A-150	
175mm	140A-175	
225mm	140A-225	
300mm	140A-300	

MUNZING RING



SIZE	CODE	COMMENT
80mm	142-80	Two Piece Zinc Plated Munzing Ring
100mm	142-100	
150mm	142-150	
175mm	142-175	
225mm	142-225	
300mm	142-300	Not stocked
10mm x 1m	142-Rod	Threaded Rod Zinc
	142W-Base	Welded Zinc Base Plate

Key

All items are DWV unless noted
M+F = Male, Female Ends

DWV= Drain Waste and Vent
F+F= Female, Female Ends

SW= Stormwater
ADJ= Adjustable

LEAF BEATER RAINHEAD



SIZE

CODE

COMMENT

100mm

751-LB

FIRST FLUSH DIVERTER



SIZE

CODE

COMMENT

100mm

752-100

Kit of Assorted Parts

Key

All items are DWV unless noted
M+F = Male, Female Ends

DWV= Drain Waste and Vent
F+F= Female, Female Ends

SW= Stormwater
ADJ= Adjustable

DWV AND STORMWATER SYSTEMS

DWV PIPE - COLOUR OFF WHITE

- Made to AS/NZS 1260
- 6 metre lengths
- Solvent joint
- Solid wall construction



PRODUCT CODE	DESCRIPTION	SN RATING	CRATE QTY	NOMINAL SIZE (MM)	OUTSIDE DIAMETER (MM)
100-100-6MI	100mm DWV Pipe Solid Wall	SN6	67	100	110
100-150-6MI	150mm DWV Pipe Solid Wall	SN4	33	150	160
100-175-6MI	175mm DWV Pipe Solid Wall	SN4	18	175	200
100-225-6MI	225mm DWV Pipe Solid Wall	SN4	11	225	250

STORM WATER PIPE - COLOUR WHITE

- Made to AS/NZS 1254
- 6 metre lengths
- Solvent joint
- Solid wall construction



PRODUCT CODE	DESCRIPTION	SN RATING	CRATE QTY	NOMINAL SIZE (MM)	OUTSIDE DIAMETER (MM)
700-90-6MI	90mm Stormwater Pipe Solid Wall	SN4	63	90	92
700-150-6MI	150mm Stormwater Pipe Solid Wall	SN2	33	150	160
700-175-6MI	175mm Stormwater Pipe Solid Wall	SN2	18	175	200
700-225-6MI	225mm Stormwater Pipe Solid Wall	SN2	11	225	250
700-300-6MI	300mm Stormwater Pipe Solid Wall	SN2	6	300	315

Key

All items are DWV unless noted
M+F = Male, Female Ends

DWV= Drain Waste and Vent
F+F= Female, Female Ends

SW= Stormwater
ADJ= Adjustable

PLAIN BEND F+F



SIZE	CODE	COMMENT
90mm x 15°	701-90-15	SW
90mm x 22°	701-90-22	SW
90mm x 45°	701-90-45	SW
90mm x 88°	701-90-88	SW
100mm x 5°	101-100-05	
100mm x 11°	101-100-11	
100mm x 15°	101-100-15	
100mm x 22°	101-100-22	
100mm x 30°	101-100-30	
100mm x 45°	101-100-45	
100mm x 60°	101-100-60	
100mm x 88°	101-100-88	
150mm x 15°	101-150-15	
150mm x 45°	101-150-45	
150mm x 45°	701-150-45	SW
150mm x 88°	101-150-88	
150mm x 88°	701-150-88	SW
175mm x 15°	701-175-15	SW
175mm x 45°	701-175-45	SW
175mm x 88°	701-175-88	SW
225mm x 15°	701-225-15	SW
225mm x 45°	101-225-45	
225mm x 45°	701-225-45	SW
225mm x 88°	101-225-88	
225mm x 88°	701-225-88	SW
300mm x 45°	701-300-45	SW
300mm x 88°	701-300-88	SW

Key

All items are DWV unless noted
M+F = Male, Female Ends

DWV= Drain Waste and Vent
F+F= Female, Female Ends

SW= Stormwater
ADJ= Adjustable

PLAIN JUNCTIONS



SIZE	CODE	COMMENT
90mm x 45°	704-90-45	SW
90mm x 88°	704-90-88	SW
100mm x 45°	104-100-45	
100mm x 88°	104-100-88	
150mm x 45°	704-150-45	SW
150mm x 88°	704-150-88	SW
175mm x 45°	704-175-45	SW
175mm x 88°	704-175-88	SW
225mm x 45°	704-225-45	SW
225mm x 88°	704-225-88	SW
300mm x 45°	704-300-45	SW
300mm x 88°	704-300-88	SW

REDUCING JUNCTIONS



SIZE	CODE	COMMENT
150mm x 100mm x 45°	104-150-100-45	
150mm x 100mm x 88°	104-150-100-88	
150mm x 100mm x 45°	704-150-100-45	SW
150mm x 100mm x 88°	704-150-100-88	SW
175mm x 100mm x 45°	704-175-100-45	SW
175mm x 150mm x 45°	704-175-150-45	SW
225mm x 100mm x 45°	704-225-100-45	SW
225mm x 100mm x 88°	704-225-100-88	SW
225mm x 150mm x 45°	704-225-150-45	SW
225mm x 150mm x 88°	704-225-150-88	SW
225mm x 175mm x 45°	704-225-175-45	SW
300mm x 150mm x 45°	704-300-150-45	SW

Key

All items are DWV unless noted
M+F = Male, Female Ends

DWV= Drain Waste and Vent
F+F= Female, Female Ends

SW= Stormwater
ADJ= Adjustable

PLAIN COUPLINGS



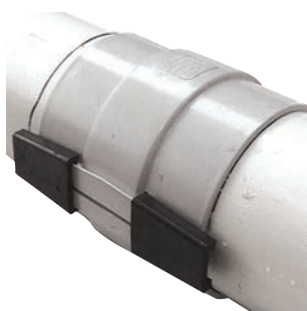
SIZE	CODE	COMMENT
90mm	710-90	SW Threaded
100mm	110-100T	Threaded
100mm	110-100U	Unthreaded
150mm	110-150T	Threaded
150mm	710-150	SW Unthreaded
175mm	710-175	SW
225mm	710-225	SW
300mm	710-300	SW
375mm	710-375	SW

SLIP COUPLINGS



SIZE	CODE	COMMENT
90mm	711S-90	SW Glued
100mm	1511S-100	
150mm	1511S-150	
175mm	711S-175	Green
225mm	711S-225	Green
300mm	711S-300	Green

QUICK REPAIR COUPLINGS



SIZE	CODE	COMMENT
100mm	115-100	
150mm	115-150	

Key

All items are DWV unless noted
M+F = Male, Female Ends

DWV= Drain Waste and Vent
F+F= Female, Female Ends

SW= Stormwater
ADJ= Adjustable

LEVEL INVERTS



M+F Invert



F+F Invert

SIZE	CODE	COMMENT
150mm x 100mm	123-150-100	M+F
175mm x 100mm	723-175-100	F+F SW
175mm x 150mm	723-175-150	F+F SW
225mm x 150mm	723-225-150M	M+F SW
225mm x 150mm	723-225-150	F+F SW
225mm x 175mm	723-225-175	F+F SW
300mm x 150mm	723-300-150M	M+F SW
300mm x 175mm	723-300-175	F+F SW
300mm x 225mm	723-300-225	F+F SW
300mm x 225mm	723-300-225M	M+F SW

DOWNPIPE ADAPTORS



725-100 Adaptors



725-80 and 725-90 Adaptors



724-90-100

SIZE	CODE	BOX QUANTITY	COMMENT
80mm-65mm	725-80-65		
90mm-65mm	725-90-65		
90mm-80mm	725-90-80		
100mm-65mm	725-100-65		
100mm-80mm	725-100-80		
100mm-90mm	725-100-90		
90mm-100mm	724-90-100		For 100mm Alloy Grate
100mm-100mm	725-100		Fits 135mm grate

Key

All items are DWV unless noted
M+F = Male, Female Ends

DWV= Drain Waste and Vent
F+F= Female, Female Ends

SW= Stormwater
ADJ= Adjustable

ACCESS PIPES



SIZE	CODE	COMMENT
100mm	129-100	
150mm	129-150	
175mm	729-175	SW. Not suitable for constant head of water

ACCESS CAP AND BASE



SIZE	CODE	COMMENT
90mm	736-90	SW
100mm	136-100	
150mm	136-150	
175mm	736-175	SW
225mm	736-225	SW
300mm	736-300	SW

PUSH ON CAPS



SIZE	CODE	BOX QUANTITY	COMMENT
90mm	737-90		SW
100mm	137-100		
150mm	137-150	20	
175mm	737-175		SW
225mm	737-225		SW
300mm	737-300		SW

Key

All items are DWV unless noted
M+F = Male, Female Ends

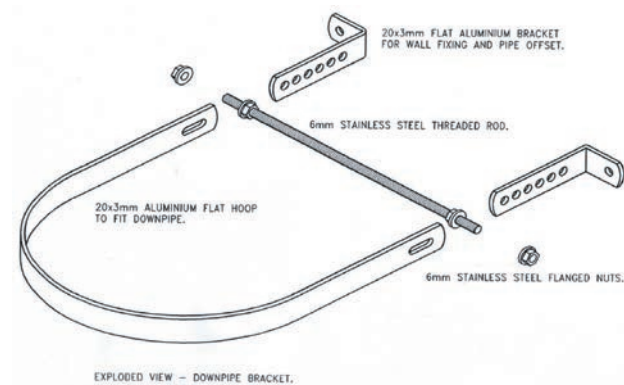
DWV= Drain Waste and Vent
F+F= Female, Female Ends

SW= Stormwater
ADJ= Adjustable

ADJUSTABLE ALUMINIUM HOLDERBATS

UNIQUE FEATURES

- Easy to install
- Use horizontally or vertically
- All aluminium frame with 304 stainless steel threaded rod
- Legs can be reversed so fixing lugs face inwards for tight spots, eg. fence posts
- Paintable and also powdercoats well to match building colour
- Two points fixing ensures much firmer attachment to building
- Adjustable in so many ways



Size range ex-stock 65mm | 80mm | 90mm | 100mm | 150mm | 175mm | 225mm | 300mm



Legs adjustable individually to compensate for changes in surface level eg. 6-Rib corrugations, change of wall surface etc.



Can adjust both legs in or out to compensate for changes in wall surface.

Recommended maximum spacing for Milford Holderbats is as per NZS 2032 Table 6.3 (below)

MAXIMUM SPACING OF SUPPORTS FOR NON-PRESSURE PIPES

NOMINAL SIZE OF PIPE	MAXIMUM SPACING OF SUPPORTS (COLD PIPELINES, IN METRES)	
	GRADED PIPELINES	VERTICAL PIPELINES
32	0.9	1.8
40, 50	1.0	2.0
65 to 150	1.2	2.5
> 150	1.5	3.0

Key

All items are DWV unless noted
M+F = Male, Female Ends

DWV= Drain Waste and Vent
F+F= Female, Female Ends

SW= Stormwater
ADJ= Adjustable

To view technical documents
please visit **www.pandfglobal.com**

SECTION C: PVC PRESSURE SYSTEMS



PRESSURE FITTINGS

BENDS



SIZE	CODE	BOX QUANTITY	COMMENT
------	------	--------------	---------

15mm x 45°	801-15-45	180	
15mm x 90°	801-15-90	180	
20mm x 45°	801-20-45	120	
20mm x 90°	801-20-90	100	
25mm x 45°	801-25-45	80	
25mm x 90°	801-25-90	140	
32mm x 45°	801-32-45	100	
32mm x 90°	801-32-90	80	
40mm x 45°	801-40-45	60	
40mm x 90°	801-40-90	50	
50mm x 45°	801-50-45	40	
50mm x 90°	801-50-90	50	
65mm x 45°	801-65-45	24	
65mm x 90°	801-65-90	18	
80mm x 45°	801-80-45		
80mm x 90°	801-80-90		
100mm x 45°	801-100-45		
100mm x 90°	801-100-90	12	
150mm x 45°	801-150-45		
150mm x 90°	801-150-90		
200mm x 45°	801-200-45		
200mm x 90°	801-200-90		

SIDE OUTLET ELBOW



SIZE	CODE	COMMENT
20mm x 15mm	802-20-15	Threaded Outlet
25mm x 15mm	802-25-15	Threaded Outlet

Key

All items are DWV unless noted
M+F = Male, Female Ends

DWV= Drain Waste and Vent
F+F= Female, Female Ends

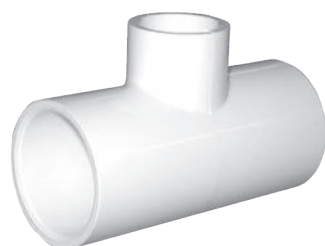
SW= Stormwater
ADJ= Adjustable

PLAIN TEE



SIZE	CODE	BOX QUANTITY	COMMENT
15mm	804-15	100	
20mm	804-20	60	
25mm	804-25	100	
32mm	804-32	40	
40mm	804-40	30	
50mm	804-50	40	
65mm	804-65	12	
80mm	804-80		
100mm	804-100		
150mm	804-150		
200mm	804-200		

PLAIN REDUCING TEE



SIZE	CODE	COMMENT
20mm x 15mm	805-20-15	
25mm x 15mm	805-25-15	
25mm x 20mm	805-25-20	
32mm x 25mm	805-32-25	
40mm x 15mm	805-40-15	
40mm x 25mm	805-40-25	
40mm x 32mm	805-40-32	
50mm x 25mm	805-50-25	
50mm x 40mm	805-50-40	
80mm x 40mm	805-80-40	
80mm x 50mm	805-80-50	
80mm x 65mm	805-80-65	
100mm x 50mm	805-100-50	
100mm x 80mm	805-100-80	
150mm x 100mm	805-150-100	

Key

All items are DWV unless noted
M+F = Male, Female Ends

DWV= Drain Waste and Vent
F+F= Female, Female Ends

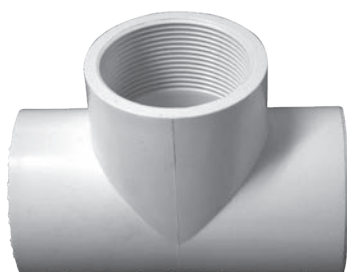
SW= Stormwater
ADJ= Adjustable

FAUCET SOCKET



SIZE	CODE	COMMENT
15mm	806-15	Over Pipe, Female Thread
20mm	806-20	
20mm x 15mm	806-20-15	
25mm	806-25	
25mm x 15mm	806-25-15	
32mm	806-32	
40mm	806-40	
50mm	806-50	
65mm	806-65	
80mm	806-80	
100mm	806-100	
150mm	806-150	

FAUCET TEE



SIZE	CODE	COMMENT
15mm	807-15	Female Thread on Offtake
20mm	807-20	
25mm	807-25	
32mm	807-32	
40mm	807-40	

Key

All items are DWV unless noted
M+F = Male, Female Ends

DWV= Drain Waste and Vent
F+F= Female, Female Ends

SW= Stormwater
ADJ= Adjustable

FAUCET ELBOW



SIZE	CODE	COMMENT
15mm x 90°	808-15-90	Female Thread one end
20mm x 90°	808-20-90	
25mm x 90°	808-25-90	
32mm x 90°	808-32-90	
40mm x 90°	808-40-90	
50mm x 90°	808-50-90	

COMPRESSION COUPLING



SIZE	CODE	COMMENT
15mm	809-15	
20mm	809-20	
25mm	809-25	
32mm	809-32	
40mm	809-40	
50mm	809-50	
65mm	809-65	
80mm	809-80	
100mm	809-100	

PLAIN SOCKET, COUPLING



SIZE	CODE	BOX QUANTITY	COMMENT
15mm	810-15	200	
20mm	810-20	150	
25mm	810-25	100	
32mm	810-32	60	
40mm	810-40	100	
50mm	810-50	60	
65mm	810-65	36	
80mm	810-80		
100mm	810-100		
150mm	810-150		
200mm	810-200		

Key

All items are DWV unless noted
M+F = Male, Female Ends

DWV= Drain Waste and Vent
F+F= Female, Female Ends

SW= Stormwater
ADJ= Adjustable

SOCKET UNION



SIZE	CODE	BOX QUANTITY	COMMENT
15mm	811-15		
20mm	811-20	10	
25mm	811-25	30	
32mm	811-32	50	
40mm	811-40		
50mm	811-50		
65mm	811-65		
80mm	811-80		
100mm	811-100		

SOCKET UNION THREADED



SIZE	CODE	COMMENT
15mm	811T-15	Female Thread each end
20mm	811T-20	
25mm	811T-25	
32mm	811T-32	
40mm	811T-40	
50mm	811T-50	
65mm	811T-65	
80mm	811T-80	
100mm	811T-100	

VALVE SOCKET



SIZE	CODE	BOX QUANTITY	COMMENT
15mm	813-15	300	Over Pipe Male Thread
20mm	813-20	200	
25mm	813-25	120	
32mm	813-32	100	
40mm	813-40	60	
50mm	813-50	100	
65mm	813-65		
80mm	813-80	30	
100mm	813-100		
150mm	813-150		

Key

All items are DWV unless noted
M+F = Male, Female Ends

DWV= Drain Waste and Vent
F+F= Female, Female Ends

SW= Stormwater
ADJ= Adjustable

FAUCET SPIGOT



SIZE	CODE	COMMENT
15mm	816-15	Into Socket Female Thread
20mm	816-20	
25mm	816-25	
32mm	816-32	
40mm	816-40	
50mm	816-50	

VALVE SPIGOT



SIZE	CODE	BOX QUANTITY	COMMENT
15mm	817-15	110	Into Socket Male Thread
20mm	817-20		
25mm	817-25		
32mm	817-32		
40mm	817-40		
50mm	817-50		
80mm	817-80	60	
100mm	817-100		

REDUCING SOCKET



SIZE	CODE	BOX QUANTITY	COMMENT
20mm x 15mm	823-20-15	150	
25mm x 15mm	823-25-15	24	
25mm x 20mm	823-25-20		
32mm x 20mm	823-32-20		
32mm x 25mm	823-32-25		
40mm x 20mm	823-40-20		
40mm x 25mm	823-40-25		
40mm x 32mm	823-40-32		
50mm x 20mm	823-50-20		
50mm x 25mm	823-50-25		
50mm x 32mm	823-50-32		
50mm x 40mm	823-50-40		
65mm x 50mm	823-65-50		
80mm x 65mm	823-80-65		
100mm x 50mm	823-100-50		
100mm x 80mm	823-100-80		
125mm x 100mm	823-125-100		
150mm x 100mm	823-150-100		
200mm x 150mm	823-200-150		
114mm x 110mm	ADP114-100		100mm Adaptor Pressure to DWV

Key

All items are DWV unless noted
M+F = Male, Female Ends

DWV= Drain Waste and Vent
F+F= Female, Female Ends

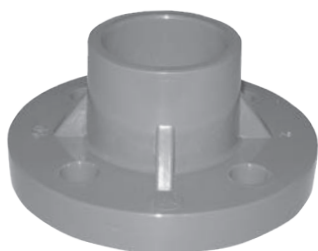
SW= Stormwater
ADJ= Adjustable

REDUCING BUSH



SIZE	CODE	BOX QUANTITY	COMMENT
20mm x 15mm	824-20-15	100	
25mm x 15mm	824-25-15		
25mm x 20mm	824-25-20	240	
32mm x 20mm	824-32-20		
32mm x 25mm	824-32-25		
40mm x 15mm	824-40-15		
40mm x 20mm	824-40-20		
40mm x 25mm	824-40-25		
40mm x 32mm	824-40-32		
50mm x 25mm	824-50-25		
50mm x 40mm	824-50-40	80	
65mm x 50mm	824-65-50		
80mm x 50mm	824-80-50		
80mm x 65mm	824-80-65		
100mm x 50mm	824-100-50		
100mm x 80mm	824-100-80		
150mm x 100mm	824-150-100		
200mm x 150mm	824-200-150		

DRILLED FULL FACE FLANGE



SIZE	CODE	COMMENT
50mm	852-50	Rubber Gaskets on page 45. These are Table D & E
65mm	852-65	
80mm	852-80	

Key

All items are DWV unless noted
M+F = Male, Female Ends

DWV= Drain Waste and Vent
F+F= Female, Female Ends

SW= Stormwater
ADJ= Adjustable

PLAIN END CAP



SIZE	CODE	BOX QUANTITY	COMMENT
15mm	830-15	360	
20mm	830-20	200	
25mm	830-25	140	
32mm	830-32		
40mm	830-40		
50mm	830-50		
65mm	830-65		
80mm	830-80		
100mm	830-100		
150mm	830-150		
200mm	830-200		

PIPE CLIP



SIZE	CODE	BOX QUANTITY	COMMENT
15mm	840-15	300	
20mm	840-20	200	
25mm	840-25	150	
32mm	840-32		
40mm	840-40		
50mm	840-50		

For Larger Clips see Clips in Section A

RUBBER GASKET FULL FACE FLANGE



SIZE	CODE	COMMENT
50mm	855-50	
65mm	855-65	
80mm	855-80	
100mm	855-100	
150mm	855-150	
200mm	855-200	
250mm	855-250	
300mm	855-300	

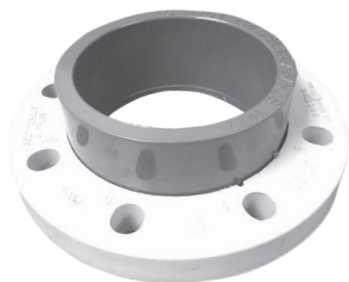
Key

All items are DWV unless noted
M+F = Male, Female Ends

DWV= Drain Waste and Vent
F+F= Female, Female Ends

SW= Stormwater
ADJ= Adjustable

VAN STONE FLANGE



SIZE	CODE	COMMENT
80mm	854-80	These are Table D&E
100mm	854-100	
150mm	854-150	
200mm	854-200	
250mm	854-250	
300mm	854-300	

HOSE TAIL



SIZE	CODE	COMMENT
15mm	860-15	
20mm	860-20	
25mm	860-25	
32mm	860-32	
40mm	860-40	
50mm	860-50	
65mm	860-65	
80mm	860-80	
100mm	860-100	

BALL VALVE THREADED



SIZE	CODE	COMMENT
15mm	PBVT-15	Female Thread each end
20mm	PBVT-20	
25mm	PBVT-25	
32mm	PBVT-32	
40mm	PBVT-40	
50mm	PBVT-50	
65mm	PBVT-65	
80mm	PBVT-80	
100mm	PBVT-100	

Key

All items are DWV unless noted
M+F = Male, Female Ends

DWV= Drain Waste and Vent
F+F= Female, Female Ends

SW= Stormwater
ADJ= Adjustable

BALL VALVE SOCKETED



SIZE	CODE	COMMENT
15mm	PBVS-15	
20mm	PBVS-20	
25mm	PBVS-25	
32mm	PBVS-32	
40mm	PBVS-40	
50mm	PBVS-50	

DOUBLE UNION BALL VALVE THREADED



SIZE	CODE	COMMENT
15mm	PDUVT-15	
20mm	PDUVT-20	
25mm	PDUVT-25	
32mm	PDUVT-32	
40mm	PDUVT-40	
50mm	PDUVT-50	
65mm	PDUVT-65	
80mm	PDUVT-80	
100mm	PDUVT-100	
150mm	PDUVT-150	

SOCKET END FOR DOUBLE UNION VALVE



SIZE	CODE	COMMENT
15mm	PDUE-15	
20mm	PDUE-20	
25mm	PDUE-25	
32mm	PDUE-32	
40mm	PDUE-40	
50mm	PDUE-50	
65mm	PDUE-65	
80mm	PDUE-80	
100mm	PDUE-100	

CHECK VALVE BALL SOCKET



SIZE	CODE	COMMENT
20mm	PCVB-20	
25mm	PCVB-25	
32mm	PCVB-32	
40mm	PCVB-40	
50mm	PCVB-50	

Key

All items are DWV unless noted
M+F = Male, Female Ends

DWV= Drain Waste and Vent
F+F= Female, Female Ends

SW= Stormwater
ADJ= Adjustable

PVC-u PRESSURE PIPE

- Made to AS/NZS 1477
- 6 metre lengths
- Solvent joint
- Lead free product



PRODUCT CODE	DESCRIPTION	PN RATING	NOMINAL SIZE (MM)	OUTSIDE DIAMETER (MM)	
				MIN	MAX
800-15-6MPN18	15mm Pressure Pipe Solvent Joint	PN18	15	21.2	21.5
800-20-6MPN12	20mm Pressure Pipe Solvent Joint	PN12	20	26.6	26.9
800-25-6MPN12	25mm Pressure Pipe Solvent Joint	PN12	25	33.4	33.7
800-32-6MPN12	32mm Pressure Pipe Solvent Joint	PN12	32	42.1	42.4
800-40-6MPN12	40mm Pressure Pipe Solvent Joint	PN12	40	48.1	48.4
800-50-6MPN12	50mm Pressure Pipe Solvent Joint	PN12	50	60.2	60.5
800-65-6MPN12	65mm Pressure Pipe Solvent Joint	PN12	65	75.2	75.5
800-80-6MPN12	80mm Pressure Pipe Solvent Joint	PN12	80	88.7	89.1
800-100-6MPN12	100mm Pressure Pipe Solvent Joint	PN12	100	114.1	114.5
800-150-6MPN12	150mm Pressure Pipe Solvent Joint	PN12	150	160.0	160.5

MAXIMUM WORKING PRESSURE COMPARISON

PRESSURE CLASS	PN	BAR	METRES HEAD	MPA	KPA	PSI
A	3	3	30	0.3	300	45
B	6	6	60	0.6	600	90
C	9	9	90	0.9	900	135
D	12	12	120	1.2	1,200	180
E	15	15	150	1.5	1,500	225
F	18	18	180	1.8	1,800	270
No class defined	10	10	100	1	1,000	150
No class defined	16	16	160	1.6	1,600	240
No class defined	20	20	200	2	2,000	300
No class defined	25	25	250	2.5	2,500	375

Key

All items are DWV unless noted
M+F = Male, Female Ends

DWV= Drain Waste and Vent
F+F= Female, Female Ends

SW= Stormwater
ADJ= Adjustable

BLUE HOSE

- Plasticised PVC hose
- Light blue with blue spiral
- Temperature range 10°C to 50°C

OUR CODE	DESCRIPTION	INSIDE DIAMETER	WALL THICKNESS MM	WORKING PRESSURE		BENDING RADIUS MM	VACUUM NEGATIVE KPA
				KG/CM ²	PSI		
BH 020-30M	20mm x 30mtr	3/4" or 20mm	2.2	5	70	40	80
BH 025-30M	25mm x 30mtr	1" or 25mm	2.2	5	70	40	80
BH 032-30M	32mm x 30mtr	1.1/4" or 32mm	2.4	5	70	40	70
BH 040-30M	40mm x 30mtr	1.1/2" or 40mm	2.6	5	70	60	70
BH 050-30M	50mm x 30mtr	2" or 50mm	3	5	70	90	70
BH 076-30M	76mm x 30mtr	3" or 76mm	3.4	4	57	110	50
BH 100-30M	100mm x 30mtr	4" or 100mm	4.3	4	57	160	40

FEATURES

- Plasticised PVC hose with spiral reinforcement of anti-shock rigid PVC
- Smooth bore
- Lightly corrugated external surface
- Very light and flexible compared to rubber hose and more durable
- Cold resistant

APPLICATIONS

- Suction and discharge of liquids, abrasive powders, fumes, vapours and shavings
- Recommended for Diesel fuels, Liquid Petroleum products, Lubricating Oils, Mineral Oils, Light Oils and Transformer Oils



Key

All items are DWV unless noted
M+F = Male, Female Ends

DWV= Drain Waste and Vent
F+F= Female, Female Ends

SW= Stormwater
ADJ= Adjustable

METRIC CONVERSION TABLE

Metric	Imperial	Applications
15mm	1/2"	Pressure
20mm	3/4"	Pressure
25mm	1"	Pressure
32mm	1 1/4"	Pressure
40mm	1 1/2"	Pressure
50mm	2"	Pressure
65mm	2 1/2"	Pressure
80mm	3"	Pressure
100mm	4"	Pressure, DWV, Stormwater
150mm	6"	Pressure, DWV, Stormwater
175mm	8"	DWV, Stormwater
225mm	10"	DWV, Stormwater
315mm	12"	DWV, Stormwater

Key

All items are DWV unless noted
M+F = Male, Female Ends

DWV= Drain Waste and Vent
F+F= Female, Female Ends

SW= Stormwater
ADJ= Adjustable

GLOBAL

NOTES:

To view technical documents
please visit **www.pandfglobal.com**

SECTION D: GATEWAY CULVERT PIPE



GATEWAY CULVERT FITTINGS

BEND



SIZE	CODE	COMMENT
110mm x 15°	501-110-15	
110mm x 45°	501-110-45	
110mm x 88°	501-110-88	
160mm x 15°	501-160-15	
160mm x 45°	501-160-45	
160mm x 88°	501-160-88	
200mm x 15°	501-200-15	
200mm x 45°	501-200-45	
200mm x 88°	501-200-88	
250mm x 15°	501-250-15	
250mm x 45°	501-250-45	
250mm x 88°	501-250-88	
315mm x 45°	501-315-45	
315mm x 88°	501-315-88	
400mm x 45°	501-400-45	
400mm x 88°	501-400-88	

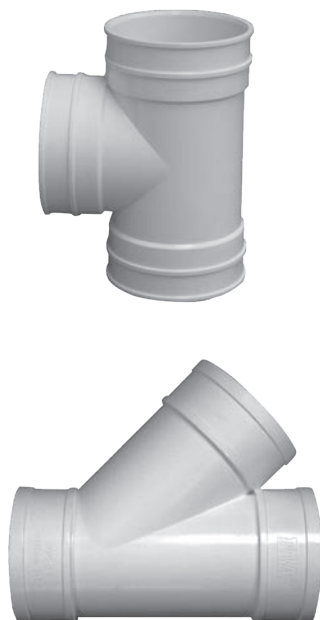
Key

All items are DWV unless noted
M+F = Male, Female Ends

DWV= Drain Waste and Vent
F+F= Female, Female Ends

SW= Stormwater
ADJ= Adjustable

JUNCTION



SIZE	CODE	COMMENT
110mm x 45°	504-110-45	F+F Junction
110mm x 88°	504-110-88	F+F Junction
160mm x 110mm x 45°	504-160-110-45	F+F Reducing Junction
160mm x 110mm x 88°	504-160-110-88	F+F Reducing Junction
160mm x 45°	504-160-45	F+F Junction
160mm x 88°	504-160-88	F+F Square Junction
200mm x 110mm x 45°	504-200-110-45	F+F Reducing Junction
200mm x 160mm x 45°	504-200-160-45	F+F Reducing Junction
200mm x 45°	504-200-45	F+F Junction
250mm x 110mm x 45°	504-250-110-45	F+F Reducing Junction
250mm x 110mm x 88°	504-250-110-88	F+F Reducing Junction
250mm x 160mm x 45°	504-250-160-45	F+F Reducing Junction
250mm x 160mm x 88°	504-250-160-88	F+F Reducing Junction
250mm x 45°	504-250-45	F+F Junction
250mm x 88°	504-250-88	F+F Junction
315mm x 160mm x 45°	504-315-160-45	F+F Reducing Junction
315mm x 88°	504-315-88	F+F Junction
315mm x 250mm x 45°	504-315-250-45	F+F Reducing Junction

DOUBLE JUNCTION



SIZE	CODE	COMMENT
110mm x 88°	506-110-88	F+F Double Junction
160mm x 88°	506-160-88	F+F Double Junction

Key

All items are DWV unless noted
M+F = Male, Female Ends

DWV= Drain Waste and Vent
F+F= Female, Female Ends

SW= Stormwater
ADJ= Adjustable

JOINER



SIZE	CODE	COMMENT
110mm	510-110	
160mm	510-160	
200mm	510-200	
250mm	510-250	
315mm	510-315	
400mm	510-400	

INVERT



SIZE	CODE	COMMENT
160mm x 110mm	523-160-110	M+F Level Invert
200mm x 110mm	523-200-110	F+F Level Invert
200mm x 160mm	523-200-160	F+F Level Invert
250mm x 160mm	523-250-160	F+F Level Invert
250mm x 200mm	523-250-200	F+F Level Invert
315mm x 160mm	523-315-160	M+F Level Invert
315mm x 200mm	523-315-200	F+F Level Invert
315mm x 250mm	523-315-250	F+F Level Invert

CAP AND BASE



SIZE	CODE	COMMENT
200mm	536-200	
250mm	536-250	
315mm	536-315	

ACCESS PIPES



SIZE	CODE	COMMENT
110mm	529-110	
160mm	529-160	
200mm	529-200	

Key

All items are DWV unless noted
M+F = Male, Female Ends

DWV= Drain Waste and Vent
F+F= Female, Female Ends

SW= Stormwater
ADJ= Adjustable

GLUE CAP



SIZE	CODE	COMMENT
110mm	537-110	
160mm	537-160	
200mm	537-200	
250mm	537-250	
315mm	537-315	
400mm	537-400	

FLAP VALVE



SIZE	CODE	COMMENT
110mm	558-110	
160mm	558-160	
200mm	558-200	
250mm	558-250	
315mm	558-315	

GATEWAY CULVERT PIPE

PIPE



SIZE	CODE	NOMINAL BORE (MM)	COMMENT	CRATE QTY
110mm x 5m	550-110-5M	100	110mm Farm Culvert Pipe Gateway	67
160mm x 5m	550-160-5M	150	160mm Farm Culvert Pipe Gateway	33
200mm x 5m	550-200-5M	175	200mm Farm Culvert Pipe Gateway	18
250mm x 5m	550-250-5M	225	250mm Farm Culvert Pipe Gateway	11
315mm x 5m	550-315-5M	300	315mm Farm Culvert Pipe Gateway	6
400mm x 6m	550-400-6M	375	400mm Farm Culvert Pipe Gateway	3

Size is outside diameter of pipe.
400mm is not socketed, joiners are sold separately.

Key

All items are DWV unless noted
M+F = Male, Female Ends

DWV= Drain Waste and Vent
F+F= Female, Female Ends

SW= Stormwater
ADJ= Adjustable

GATEWAY CULVERT PIPE

BENEFITS:

- Strong
- No rust problem
- Easy to handle
- Proven, time tested product

TECHNICAL DATA:

- Made to AS/NZS1254 Standard
- Socket one end
- uPVC construction
- 5m long standard length
- 6m long available
- Sizes are outside diameter of pipe

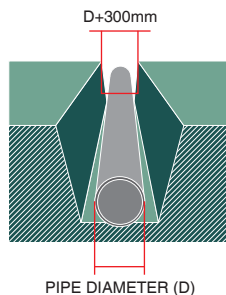
USES:

- Farm culverts
- Forestry culverts
- Cut in 1/2 lengthways
- Stock troughs, fluming
- Builders - columns

TIPS:

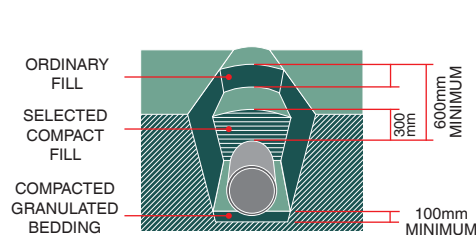
- Project end of pipe to prevent erosion of backfill downstream
- Timber, stone or grass headwalls to prevent erosion upstream
- No sharp objects in contact with pipe when laying or backfilling
- Socket end of pipe to face upstream

INSTALLATION:



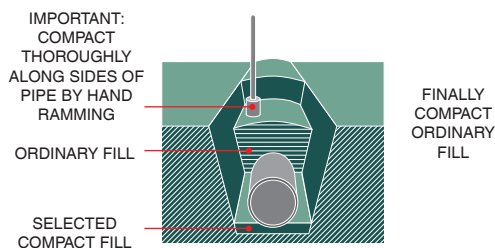
EXCAVATION

Dig a trench 300mm wider than the pipe. Ideal depth of cover is 600mm.



PIPE LAYING

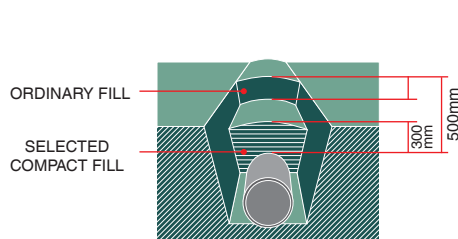
Bedding to be 5-20mm compacted granular material. Lay pipe in centre of trench. Selected compactible fill (not wet clay) added in layers around pipe to 300mm cover. Top up trench with compacted ordinary fill.



COMPACTION OF BEDDING

GATEWAY pipes uses its flexibility to transfer load to the surrounding bedding.

Thorough compaction of the fill along the pipe sides is important to ensure long, trouble free service. Fill should be carefully compacted by hand ramming along the sides of and around the pipe and built up to the finished ground surface.



LIGHT DUTY INSTALLATION

Selected excavation fill may be used as bedding. It should be substantially free from rock, tree roots or rubbish. Wet or saturated clay shouldn't be used as bedding or surrounding material. The minimum depth of cover should be 500mm.





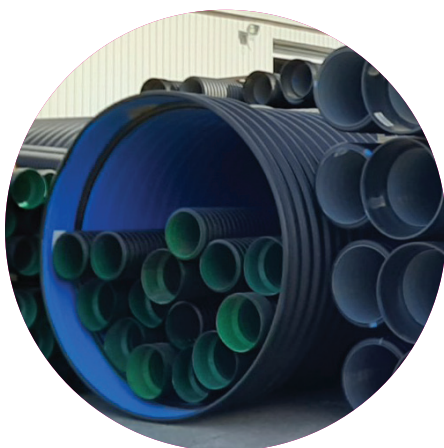
NOTES:

To view technical documents
please visit **www.pandfglobal.com**

SECTION E: EUROFLO® PIPE



WHAT P&F GLOBAL CAN HELP WITH



Range

EUROFLO® culverts comes in a wide range of sizes from 110mm through to 2100mm. We also stock slotted drainage pipe in sizes from 110mm to 630mm.

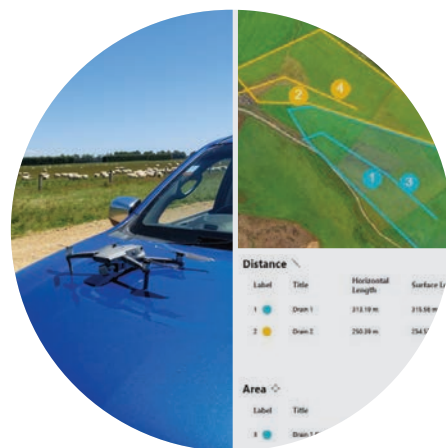
Choose from a wide range of fittings and accessories to make your next drainage project possible.



Stock

With a wide range of stock held in locations throughout New Zealand, P&F Global can get the stock where you need it, when you need it.

Kaitaia
Auckland
Napier
Christchurch
Invercargill



Expertise

We use our expertise to create personalised farm drainage plans through our free drone mapping service. Get better drainage in the right place with the right size culverts, all while considering environmental responsibilities around fish passage and stock management.

EUROFLO® PIPE

EUROFLO® RURAL SN4 PIPE

- 5.8 metre lengths overall including socket
- Rubber ring joint if needed – see page 69 for codes for the rubber rings
- 2.9M lengths available on request
- SN8 and SN16 range in sizes 250mm - 2100mm available for civil and/or heavy traffic installations i.e. milk tanker crossings



PRODUCT CODE	SIZE	SN RATING	CRATE QTY	INTERNAL DIAMETER (MM)	NOMINAL BORE (MM)	OUTSIDE DIAMETER (MM)
520-160-5.8M	160mm	SN8	33	134mm	150	160
520-200-5.8M	200mm	SN4	18	174mm	175	200
520-250-5.8M	250mm	SN4	11	214mm	225	250
520-315-5.8M	315mm	SN4	6	273mm	300	315
520-400-5.8M	400mm	SN4	3	343mm	375	400
520-500-5.8M	500mm	SN4	2	427mm	430	500
520-630-5.8M	630mm	SN4	1	533mm	525	630
520-800-5.8M	800mm	SN4	1	673mm	675	800
520-1000-5.8M	1000mm	SN4	1	849mm	850	1000
520-1200-5.8M	1200mm	SN4	1	1040mm	1050	1200

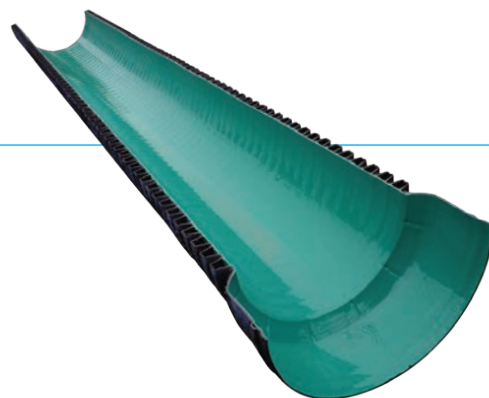


EUROFLO® rural pipe being installed on farm

EUROFLO® FLUMING (HALF PIPE)

- 5.8 metre lengths overall including socket
- Can be cut in half and used for feed troughs
- Leadtime for cutting pipe is 2 days for up to 10 lengths, 2-4 days for 10+ lengths

PRODUCT CODE	SIZE
520-200-FLUM	200mm
520-250-FLUM	250mm
520-315-FLUM	315mm
520-400-FLUM	400mm
520-500-FLUM	500mm
520-630-FLUM	630mm
520-800-FLUM	800mm
520-1000-FLUM	1000mm
520-1200-FLUM	1200mm



EUROFLO® fluming as seen on the St Bathans cycleway



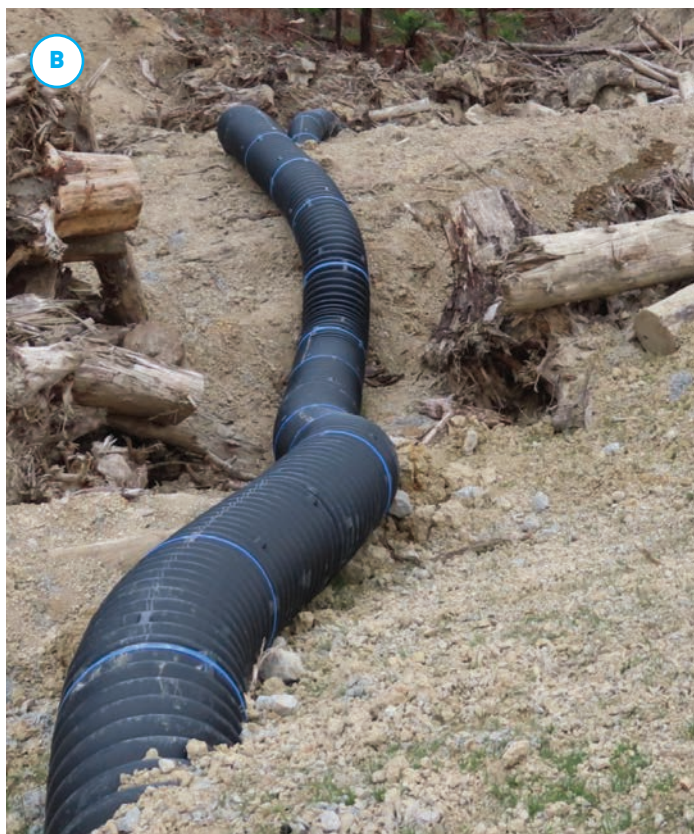
EUROFLO® fluming used for stormwater run-off in landscape design

EUROFLO® FLEXIPIPE

- 5.8 metre lengths overall including socket
- Single wall flexible culverts
- Bayonet connections for easy joining of flexipipe



PRODUCT CODE	SIZE	DESCRIPTION	INTERNAL DIAMETER (MM)	OUTSIDE DIAMETER (OD)
540-500-5.8M	500mm	Full-length flexible pipe	400	500
540-500-5.8M-FLEXI	500mm	Standard EUROFLO SN8 pipe with flexible connector	400	500
540-700-5.8M	700mm	Full-length flexible pipe	600	700
540-630-5.8M-FLEXI	700mm	Standard EUROFLO SN8 pipe with flexible connector	600	700



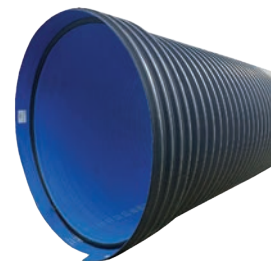
A: Standard 500mm SN8 EUROFLO® with Flexible connector (540-500-5.8M-FLEXI)

B: Full-length 500mm flexible pipe (540-500-5.8M)

C and D: Standard 630mm SN8 EUROFLO® with Flexible connector (540-630-5.8M-FLEXI)

EUROFLO® LARGE DIAMETER SN8 PIPE

- 5.8 metre lengths overall including socket
- Rubbers rings sold separately



PRODUCT CODE	SIZE	INTERNAL DIAMETER (MM)	NOMINAL BORE (MM)	OUTSIDE DIAMETER (MM)
560-1300-5.8M	1300mm	1200	1200	1300
560-1500-5.8M	1500mm	1400	1400	1500
560-1700-5.8M	1700mm	1600	1600	1700
560-1900-5.8M	1900mm	1800	1800	1900
560-2100-5.8M	2100mm	2000	2000	2100



EUROFLO® large diameter being installed on farm

EUROFLO® CIVIL SN8 PIPE

- Made to AS/NZS 5065-2005 and independently certified to meet the standard
- 5.8 metre lengths overall including socket
- Rubber ring joints available, see page 69 for details



PRODUCT CODE	SIZE	CRATE QTY	INTERNAL DIAMETER (MM)	NOMINAL BORE (MM)	OUTSIDE DIAMETER (MM)
560-250-5.8M	250mm	11	218mm	225	250
560-315-5.8M	315mm	6	273mm	300	315
560-400-5.8M	400mm	3	344mm	375	400
560-500-5.8M	500mm	2	427mm	450	500
560-630-5.8M	630mm	1	533mm	525	630
560-800-5.8M	800mm	1	691mm	675	800
560-1000-5.8M	1000mm	1	855mm	850	1000
560-1200-5.8M	1200mm	1	1024mm	1050	1200

2.9M SN8 PIPE

PRODUCT CODE	SIZE	CRATE QTY	INTERNAL DIAMETER (MM)	NOMINAL BORE (MM)	OUTSIDE DIAMETER (MM)
560-250-2.9M	250mm	11	218mm	225	250
560-315-2.9M	315mm	6	273mm	300	315
560-400-2.9M	400mm	3	344mm	375	400
560-500-2.9M	500mm	2	427mm	450	500
560-630-2.9M	630mm	1	533mm	525	630
560-800-2.9M	800mm	1	691mm	675	800
560-1000-2.9M	1000mm	1	855mm	850	1000
560-1200-2.9M	1200mm	1	1024mm	1050	1200

EUROFLO® CIVIL SN16 PIPE

- Made to AS/NZS 5065-2005 and independently certified to meet the standard
- 5.8 metre lengths overall including socket
- Rubber ring joints available, see page 69 for details
- Also available in 2.9m lengths



PRODUCT CODE	SIZE	CRATE QTY	INTERNAL DIAMETER (MM)	NOMINAL BORE (MM)	OUTSIDE DIAMETER (MM)
580-250-5.8M	250mm	11	214mm	225	250
580-315-5.8M	315mm	6	268mm	300	315
580-400-5.8M	400mm	3	339mm	375	400
580-500-5.8M	500mm	2	422mm	450	500
580-630-5.8M	630mm	1	530mm	525	630
580-800-5.8M	800mm	1	683mm	675	800



Civil SN8 pipe being laid down a hillside in Wellington.

IAPMO R&T OCEANA
7-11 Palford Road, Newmarket, Victoria 3055, Australia






IAPMO R&T Oceana is a product certification body which inspects and arranges for the independent laboratory testing of samples taken from the manufacturer's stock or from the market or a combination of both, to verify compliance of the requirements of applicable Standards and Specifications. This activity is coupled with periodic surveillance of the manufacturer's factory and any major subcontractor's site as well as the assessment of the manufacturer's Quality Assurance System. This certification is subject to the conditions set forth in the characteristics below and is not to be construed as any recommendation, assurance or guarantee by IAPMO R&T Oceana of the product acceptance by Authorities Having Jurisdiction.

CERTIFICATE OF CONFORMITY

IAPMO R&T Oceana hereby grants to:

P & F GLOBAL LIMITED

58 Benmore Street, Prestonville, Invercargill 9810 New Zealand

the right to use the WaterMark in accordance with the WaterMark Manual for the WaterMark Certification Scheme - Australian Standards, WaterMark Technical Specifications, and the Plumbing Code of Australia, only in respect of the certified product as described in the WaterMark Certificate of Conformity - Schedule of Certified Products (R&T) also IAPMO Product Listing Document. The Certificate is granted subject to the rules governing the WaterMark Certification Scheme and the Terms and Conditions of the Approved User Agreement and IAPMO Oceana's WaterMark Governance Rules.

Evaluated to:

AS/NZS 5065-2005

Polyethylene and polypropylene pipes and fittings for drainage and sewerage applications

Manufacturer:
Refer to Licence Holder

Licence No.: WM-032122

First Certified: 11 February 2021

Certification Date: 22 April 2021

Expiry Date: 10 February 2026


CEO, The WPM Group

This WaterMark certification is for the period indicated herein and is valid after the date shown above. Any change in material, manufacturing process, marking or design without having first obtained the approval of IAPMO R&T Oceana, or any evidence of non-compliance with applicable Standards, Specifications or of other non-compliance, may be deemed sufficient cause for revocation of this certification. Reproduction of or reference to this certificate for advertising purposes may be made only by specific written permission of IAPMO R&T Oceana. Any alteration of this certificate could be grounds for revocation of this certification.

*This certificate is issued by a JAS-ANZ accredited Conformity Assessment Body. The ABCB and JAS-ANZ do not in any way warrant, guarantee or represent that the product the subject of this Certificate conforms to the WaterMark Certification Scheme Rules, nor accept any liability arising out of the use of the product. The ABCB disclaims to the extent permitted by law, all liability (including negligence) for claims of losses, expenses, damages and costs arising as a result of the use of the product(s) referred to in this Certificate.

EUROFLO® RUBBER RINGS

Please refer to the rubber ring installation video on our website

SN4 RUBBER RINGS



SIZE	CODE
160mm OD	520-160-RBR
200mm OD	520-200-RBR
250mm OD	520-250-RBR
315mm OD	520-315-RBR
400mm OD	520-400-RBR
500mm OD	520-500-RBR
630mm OD	520-630-RBR
800mm OD	520-800-RBR
1000mm OD	520-1000-RBR
1200mm OD	520-1200-RBR

SN8/SN16 RUBBER RINGS



SIZE	CODE
250mm OD	560-250-RBR
315mm OD	560-315-RBR
400mm OD	560-400-RBR
500mm OD	560-500-RBR
630mm OD	560-630-RBR
800mm OD	560-800-RBR
1000mm OD	560-1000-RBR
1200mm OD	560-1200-RBR
1300mm OD	560-1300-RBR
1500mm OD	560-1500-RBR
1700mm OD	560-1700-RBR
1900mm OD	560-1900-RBR
2100mm OD	560-2100-RBR

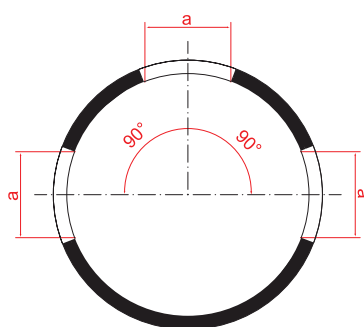


Onsite installation of rubber rings.

EUROFLO® SLOTTED PIPE

- 5.8 metre lengths overall including socket
- Comes with socket on pipe as standard
- SN8 and SN16 pipes slotted to order

PRODUCT CODE	DESCRIPTION	CRATE QTY	NOMINAL BORE (MM)	OUTSIDE DIAMETER (MM)
590-110-5.8M	110mm Slotted Drainage Pipe	67	100	110
590-160-5.8M	160mm Slotted Drainage Pipe	33	150	160
590-200-5.8M	200mm Slotted Drainage Pipe	18	175	200
590-250-5.8M	250mm Slotted Drainage Pipe	11	225	250
590-315-5.8M	315mm Slotted Drainage Pipe	6	300	315
590-400-5.8M	400mm Slotted Drainage Pipe	3	375	400
590-500-5.8M	500mm Slotted Drainage Pipe	2	430	500
590-630-5.8M	630mm Slotted Drainage Pipe	1	525	630
590-800-5.8M	800mm Slotted Drainage Pipe	1	675	800
590-1000-5.8M	1000mm Slotted Drainage Pipe	1	850	1000
590-1200-5.8M	1200mm Slotted Drainage Pipe	1	1050	1200



Standard Pattern
3-5 slots depending on size
Total slotted angle = 240°



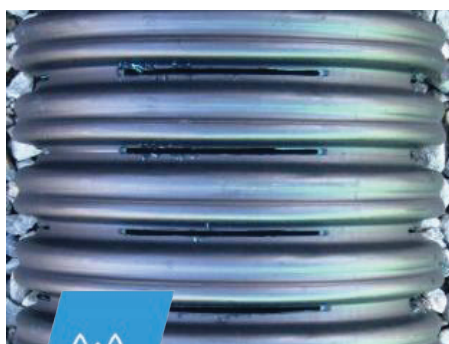
Slotted pipe being installed on farm

EUROFLO® SLOTTED PIPE



FASTER FLOW

The smooth-bottom design and long slots let water flow quickly, reducing the risk of blockages and improving drainage performance.



BETTER DRAINAGE

The self-cleaning long slots are less likely to clog with sediment, keeping your system running smoothly for longer.



STRONGER PERFORMANCE

Rigid lengths make it easier to lay straight drainage lines that perform consistently, even in challenging conditions.

DRONE MAPPING

Maximise your land production by installing EUROFLO® slotted pipe.

Our experts will create a custom drainage plan using comprehensive calculations from data collected by our free drone mapping service.



Distance

Label	Title	Horizontal Length	Surface Length	Slope	Vertical H
1	Drain 1	313.19 m	315.56 m	4.03°, 7.05%	22.12 m
2	Drain 2	250.39 m	254.52 m	3.89°, 6.81%	17.09 m

Area

Label	Title	Area	Surface Area
3	Drain 1 Catchment area	6.04 ha	6.17 ha



EUROFLO® FITTINGS

JOINERS/MANHOLE CONNECTORS



250mm – 500mm



630mm – 1200mm

SIZE	CODE	COMMENT
250mm	521-250	
315mm	521-315	
400mm	521-400	
500mm	521-500	
630mm	521-630	
800mm	521-800	
1000mm	521-1000	
1200mm	521-1200	Only fits the 1200mm SN8 pipe.

REDUCERS



SIZE	CODE	COMMENT
315mm x 250mm	521-315-250	
400mm x 250mm	521-400-250	
400mm x 315mm	521-400-315	
500mm x 400mm	521-500-400	

Note: other sizes can be ordered in

JUNCTIONS



SIZE

CODE

COMMENT

250mm x 45°

521-250-45J

250mm x 90°

521-250-90J

315mm x 45°

521-315-45J

400mm x 45°

521-400-45J

Note: Other fittings can be made to order

SLIP COUPLERS



SIZE

CODE

COMMENT

250mm

521-250SLIP

315mm

521-315SLIP

400mm

521-400SLIP

500mm

521-500SLIP

630mm

521-630SLIP

800mm

521-800SLIP

1000mm

521-1000SLIP

1200mm

521-1200SLIP

Slip Couplers

CAPS



SIZE

CODE

COMMENT

250mm

521-250CAP

315mm

521-315CAP

400mm

521-400CAP

500mm

521-500CAP

630mm

521-630CAP

800mm

521-800CAP

1000mm

521-1000CAP

1200mm

521-1200CAP

BENDS



SIZE	CODE	COMMENT
250mm x 30°	521-250-30	
250mm x 45°	521-250-45	
250mm x 90°	521-250-90	
315mm x 15°	571-315-15	M+F
315mm x 30°	571-315-30	M+F
315mm x 45°	521-315-45	
315mm x 90°	521-315-90	
400mm x 45°	521-400-45	
400mm x 90°	521-400-90	
500mm x 45°	521-500-45	
500mm x 90°	521-500-90	
630mm x 22°	571-630-22	M+F
630mm x 45°	521-630-45	
630mm x 90°	521-630-90	
800mm x 22°	571-800-22	M+F
800mm x 45°	571-800-45	M+F
800mm x 90°	571-800-90	M+F

Note: Other fittings can be made to order. All M+F bends are fabricated.

ACCESSORIES



Tyre Lever



Lubricant

SIZE	CODE	COMMENT
One size	521-TOOL-001	Tyre lever
500gm	OSLU 19210	Lubricant

FABRICATED FITTINGS

We stock a range of standard fittings for EUROFLO® pipe. See what is available in our catalogue online at pandfglobal.com. We also manufacture fittings to order meaning you can choose from a wide range of EUROFLO® fittings to complete your pipeline.

Our fabricated fittings are made in New Zealand out of EUROFLO® pipe and conform to the same standard as the Euroflo pipe.

Fabricated fittings can be made in any size from 160mm to 1200mm. Larger fittings can be made to order.

Lead time on fittings is 10 working days.

Price on application.



500mm 22 degree bend



800mm 88 degree bend

INFORMATION REQUIRED TO FABRICATE YOUR FITTING:

- What is the fitting type? I.e. joiner, junction, bend etc.
- What is the EUROFLO® pipe size (OD)?
- What is the offtake pipe size?
- What is the degree angle?
- Where are sockets required on the fitting?
- Drawings need to be provided



800mm Z bend



1000mm wye junction with a 200mm 45 degree connection



1200mm pipe with a 630mm riser



EUROFLO® GO-IN SYSTEM

COMPONENTS:

1. Holesaw and arbor
2. Sealing ring
3. Sealing adaptor (needed to connect pipes of 160mm and 200mm OD)
4. Sealing adaptor rubber ring gasket (needed to connect smooth PVC or PE pipes of 160mm and 200mm OD)

BENEFITS:

- Branches can be simply installed after main pipe placement
- Extremely cost effective
- Can be installed vertically even when water is flowing
- Fast and user-friendly
- Adaptable for branches of either ribbed PE or smooth PVC

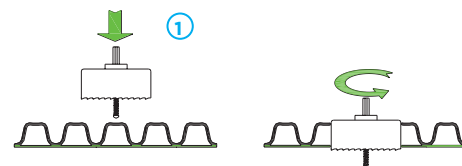
USES:

- Breather pipe connections
- Field drain connections to main drain
- Connections into sumps and galleries



INSTALLATION:

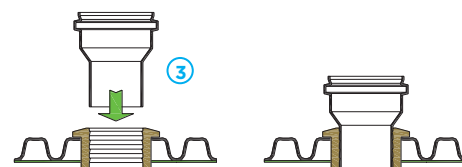
Drill through top centre of corrugation at right angles to pipe axis.



Insert sealing ring fully into hole.

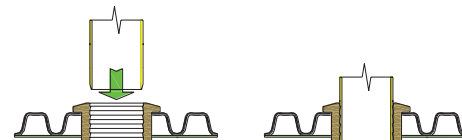


For branch pipes of 160mm and 200mm OD lube inside of sealing ring and insert the sealing adaptor.

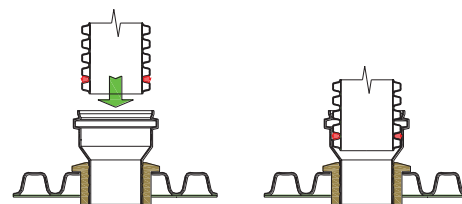


OR

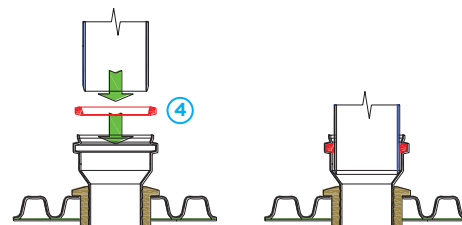
If branch pipe is 110mm OD a sealing adaptor is not needed. Insert branch pipe directly into sealing ring.



For a EUROFLO® branch pipe fit a rubber ring (as for a EUROFLO® pipe line watertight connection), and insert the pipe spigot, with the rubber ring installed, into the sealing adaptor.



For a smooth PVC branch, fit a rubber ring gasket into groove in the sealing adaptor, lubricate the tip of the rubber ring gasket and then insert the branch pipe.



DN OF BRANCH PIPE IN MM

MINIMUM SIZE OF EUROFLO® MAIN PIPE

110mm	315mm
160mm	400mm
200mm	500mm

250mm and 315mm available upon enquiry.

GO-IN SYSTEM FITTINGS

HOLESAW AND ARBOR



SIZE	CODE	COMMENT
110mm OD	521-2431-110	Holesaw Only
110mm	521-2432-11	Arbor for Holesaw
160mm OD	521-2431-160	Holesaw Only
200mm OD	521-2431-200	Holesaw Only
160/200mm	521-2432-16	Arbor for Holesaw

Note: The correct sized holesaw and arbor both need to be purchased
250mm and 315mm available upon enquiry

SEALING RINGS



SIZE	CODE	COMMENT
110mm OD	521-2439-110	Fits DWV or stormwater pipe inside rubber
160mm OD	521-2439-160	Requires sealing adaptor 521-2430-160
200mm OD	521-2439-200	Requires sealing adaptor 521-2430-200

SEALING ADAPTORS



SIZE	CODE	COMMENT
160mm OD	521-2430-160	For use with sealing ring 521-2439-160
200mm OD	521-2430-200	For use with sealing ring 521-2439-200

SEALING ADAPTOR RUBBER RING GASKETS



SIZE	CODE	COMMENT
160mm	521-1301-160	For use when connecting PVC pipe into sealing adaptors
200mm	521-1301-200	

DRAINCOIL FITTINGS

Work with all common draincoil brands

PLAIN JUNCTIONS



SIZE	CODE	BOX QUANTITY	COMMENT
65mm x 45°	D04-65-45		Junction
65mm x 85°	D04-65-88		Junction
110mm x 45°	D04-110-45	16	Junction
110mm x 88°	D04-110-88		Junction
160mm x 110mm x 45°	D04-160-110-45	8	Reducing Junction
160mm x 110mm x 88°	D04-160-110-88		Reducing Junction
160mm x 45°	D04-160-45	8	Junction
160mm x 88°	D04-160-88		Square Junction

DOUBLE JUNCTIONS



SIZE	CODE	COMMENT
110mm x 88°	D06-110-88	Double Junction
160mm x 100mm x 45°	D06-160-110-45	Double Reducing Junction
160mm x 88°	D06-160-88	Double Junction

PLAIN COUPLING

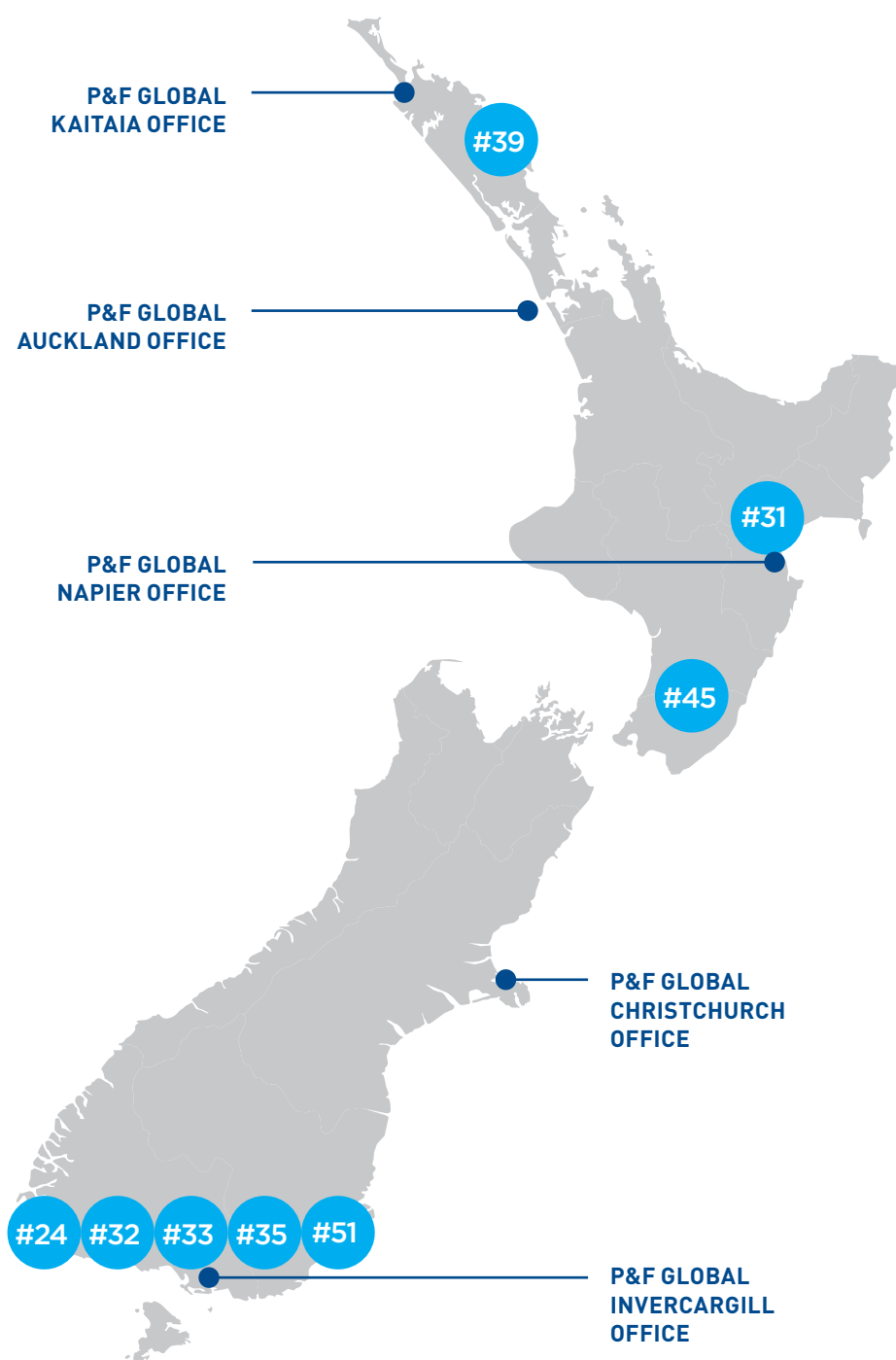


SIZE	CODE	COMMENT
65mm	D10-65	Coupling
110mm	D10-110	Coupling
160mm	D10-160	Coupling

GLOBAL

NOTES:

EUROFLO® RURAL CASE STUDIES



EUROFLO® Rescues Milk Delivery

TYPE: Stock crossings
PROJECT: Tanker track bridge repair
PRODUCT: EUROFLO® 1950mm Culvert Pipe
WHO: Waihape Excavating and Drainage



EUROFLO® Simplifies Culvert Replacement In Stream For South Otago Farmer

TYPE: Culvert Replacement
PROJECT: Replacing old steel culvert in stream to manage flows and flooding
PRODUCT: EUROFLO® 1950mm culvert pipe
WHO: Toko Mouth farmer Simon Davies, South Otago



EUROFLO® Go-In System Provides Easy Drainage Solution For Commercial Dairy Farm Shed

TYPE: Rainwater drainage

PROJECT: Rainwater drainage for loafing barn

PRODUCT: EUROFLO® Go-In System

WHO: Tukituki Dairy Goats commercial farm



EUROFLO® slotted pipe saves time and delivers better farm drainage

TYPE: Culvert Replacement

PROJECT: Drainage solution to replace earthenware pipes

PRODUCT: EUROFLO® 315mm slotted drainage pipe

WHO: Southland farmer Murray Ballantine



EUROFLO® crossings create access and efficiency on farm

TYPE: Stock Crossings

PROJECT: Installation of stock crossings

PRODUCT: EUROFLO® large bore culvert pipe

WHO: Dairy farmer Hamish Robinson



Drone Service Delivers Smart Future-Proofed Drainage Plan

TYPE: Drone

PROJECT: Drone service and farm drainage plan

PRODUCT: EUROFLO® Go-In System + 200mm, 250mm slotted pipe

WHO: Rayner's Gladstone farm



Gateway pipe the first choice for family-owned Southland company

TYPE: Farm Drainage

PROJECT: Southland company Superior Farm Maintenance

PRODUCT: Gateway PVC culvert pipe

WHO: Superior Farm Maintenance



EUROFLO® helps Northland nursery project flow smoothly

TYPE: Subsurface drainage system

PROJECT: Kauri Park Nurseries

PRODUCT: EUROFLO® Pipe 630mm 800mm

WHO: Kauri Park Nurseries, Reyburn & Bryant, and Clements Contractors

To view technical documents
please visit **www.pandfglobal.com**

SECTION F: COMMERCIAL WASTE



COMMERCIAL WASTE SYSTEM – ABOVE GROUND

M+F BENDS



SIZE	CODE	COMMENT
32mm x 45°	OSHT 10012	
32mm x 88°	OSHT 10015	
50mm x 15°	OSHT 10800	
50mm x 30°	OSHT 10810	
75mm x 15°	OSHT 10900	
75mm x 30°	OSHT 10910	
50mm x 45°	OSHT 11120	
50mm x 88°	OSHT 11150	
75mm x 45°	OSHT 11220	
75mm x 88°	OSHT 11250	
110mm x 15°	OSHT 11300	
110mm x 30°	OSHT 11310	
110mm x 45°	OSHT 11320	
110mm x 88°	OSHT 11350	

M+F DOUBLE JUNCTIONS



SIZE	CODE	COMMENT
50mm x 67°	OSHT 11400	
75mm x 67°	OSHT 11410	
110mm x 50mm x 67°	OSHT 11420	Can use as a two way riser
110mm x 67°	OSHT 11440	

Key

All items are DWV unless noted
M+F = Male, Female Ends

DWV= Drain Waste and Vent
F+F= Female, Female Ends

SW= Stormwater
ADJ= Adjustable

M+F JUNCTIONS



SIZE	CODE	COMMENT
32mm x 45°	OSHT 10020	
50mm x 45°	OSHT 12110	
50mm x 88°	OSHT 14110	
110mm x 50mm x 45°	OSHT 12130	Reducing Junction
75mm x 45°	OSHT 12220	
110mm x 75mm x 45°	OSHT 12230	Reducing Junction
110mm x 45°	OSHT 12330	
110mm x 88°	OSHT 14330	

LEVEL INVERTS



SIZE	CODE	COMMENT
50mm - 32mm	OSHT 10041	
50mm - 40mm	OSHT 15010	
75mm - 50mm	OSHT 15120	
110mm - 50mm	OSHT 15130	
110mm - 75mm	OSHT 15230	

M+F INSPECTION PIPE



SIZE	CODE	COMMENT
110mm	OSHT 18310	

Key

All items are DWV unless noted
M+F = Male, Female Ends

DWV= Drain Waste and Vent
F+F= Female, Female Ends

SW= Stormwater
ADJ= Adjustable

END PLUG



SIZE	CODE	COMMENT
32mm	OSHT 17020	
50mm	OSHT 17120	
75mm	OSHT 12520	
110mm	OSHT 17320	

COUPLING



SIZE	CODE	COMMENT
32mm	OSHT 10030	
50mm	OSHT 17100	
75mm	OSHT 17200	
110mm	OSHT 17300	

SLIP COUPLING



SIZE	CODE	COMMENT
32mm	OSHT 10055	
50mm	OSHT 18100	
75mm	OSHT 18200	
110mm	OSHT 18300	

Key

All items are DWV unless noted
M+F = Male, Female Ends

DWV= Drain Waste and Vent
F+F= Female, Female Ends

SW= Stormwater
ADJ= Adjustable

SINGLE SOCKET



SIZE	CODE	COMMENT
50mm	OSHT 12810	Copper Adaptor
75mm	OSHT 13810	Copper Adaptor
110mm	OSHT 17330	Copper Adaptor

GASKET SET



SIZE	CODE	COMMENT
110mm	OSHT 19320	

CAST IRON CONNECTION



SIZE	CODE	COMMENT
50mm	OSHT 12610	Spigot end
110mm	OSHT 12630	Spigot end

Key

All items are DWV unless noted
M+F = Male, Female Ends

DWV= Drain Waste and Vent
F+F= Female, Female Ends

SW= Stormwater
ADJ= Adjustable

CONNECTION TO METAL PIPE



SIZE	CODE	COMMENT
50/40mm	OSHT 12910	
50mm	OSHT 12820	

GULLY TRAP



SIZE	CODE	COMMENT
110mm	OSHT 17350	Use 3 110mm x 88° Bends or OSKG Product

JOINTING LUBRICANT



SIZE	CODE	COMMENT
500gm	OSLU 19210	

Note: This is food grade approved.

Key

All items are DWV unless noted
M+F = Male, Female Ends

DWV= Drain Waste and Vent
F+F= Female, Female Ends

SW= Stormwater
ADJ= Adjustable

COMMERCIAL WASTE PIPE 5-METRE LENGTHS

- Above ground pipe
- Plain end (socket is extra)
- Polypropylene
- Grey
- High Temperature
- Chemical Resistant



PRODUCT CODE	DESCRIPTION	NOMINAL SIZE (MM)	OUTSIDE DIAMETER (MM)
OSHT 10008	32mm High Temp Pipe	24	32
OSHT 10190	50mm High Temp Pipe	42	50
OSHT 10290	75mm High Temp Pipe	67	75
OSHT 10390	110mm High Temp Pipe	100	110

COMMERCIAL WASTE PIPE 1.5-METRE LENGTHS

- Above ground pipe
- Socket end
- Polypropylene
- Grey
- High Temperature
- Chemical Resistant



PRODUCT CODE	DESCRIPTION	NOMINAL SIZE (MM)	OUTSIDE DIAMETER (MM)
OSHT10186	50mm x High Temp Pipe	42	50
OSHT10286	75mm x High Temp Pipe	67	75

Key

All items are DWV unless noted
M+F = Male, Female Ends

DWV= Drain Waste and Vent
F+F= Female, Female Ends

SW= Stormwater
ADJ= Adjustable

COMMERCIAL WASTE SYSTEM – BELOW GROUND

M+F BENDS



SIZE	CODE	COMMENT
110mm x 15°	OSKG 71300	
110mm x 30°	OSKG 71310	
110mm x 45°	OSKG 71320	
110mm x 67°	OSKG 71330	
110mm x 87°	OSKG 71350	
160mm x 15°	OSKG 71500	
160mm x 30°	OSKG 71510	
160mm x 45°	OSKG 71520	
160mm x 87°	OSKG 71550	
200mm x 15°	OSKG 71600	
200mm x 30°	OSKG 71610	
200mm x 45°	OSKG 71620	
250mm x 45°	OSKG 71720	

M+F JUNCTIONS



SIZE	CODE	COMMENT
110mm x 45°	OSKG 72330	
160mm-110mm x 45°	OSKG 72350	Reducing Junction
160mm x 45°	OSKG 72550	
200mm-160mm x 45°	OSKG 72560	Reducing Junction
200mm x 45°	OSKG 72660	
250mm-160mm x 45°	OSKG 72760	Reducing Junction
250mm x 45°	OSKG 72770	

LEVEL INVERTS



SIZE	CODE	COMMENT
160mm-110mm	OSKG 75350	
200mm-160mm	OSKG 75560	
250mm-200mm	OSKG 75670	

Key

All items are DWV unless noted
M+F = Male, Female Ends

DWV= Drain Waste and Vent
F+F= Female, Female Ends

SW= Stormwater
ADJ= Adjustable

END PLUGS



SIZE	CODE	COMMENT
110mm	OSKG 77320	
160mm	OSKG 77520	

COUPLING



SIZE	CODE	COMMENT
110mm	OSKG 77300	
160mm	OSKG 77500	

SLIP COUPLING



SIZE	CODE	COMMENT
110mm	OSKG 78300	
160mm	OSKG 78500	
200mm	OSKG 78600	
250mm	OSKG 78700	
315mm	OSKG 78800	

JOINTING LUBRICANT



SIZE	CODE	COMMENT
500gm	OSLU 19210	

Note: This is food grade approved.

Key

All items are DWV unless noted
M+F = Male, Female Ends

DWV= Drain Waste and Vent
F+F= Female, Female Ends

SW= Stormwater
ADJ= Adjustable

GULLY TRAP



SIZE	CODE	COMMENT
110mm	OSKG 78315	

INSPECTION PIPE



SIZE	CODE	COMMENT
110mm	OSKG 78310	
160mm	OSKG 78510	

ADAPTER TO FIT CAST PIPE



SIZE	CODE	COMMENT
110mm x 124mm	OSKG 78320	
160mm x 176mm	OSKG 78520	

ADAPTORS TO E/W PIPE



SIZE	CODE	COMMENT
110mm x 138mm	OSKG 77380	
160mm x 194mm	OSKG 77580	

Key

All items are DWV unless noted
M+F = Male, Female Ends

DWV= Drain Waste and Vent
F+F= Female, Female Ends

SW= Stormwater
ADJ= Adjustable

SOCKET TO E/W PIPE



SIZE

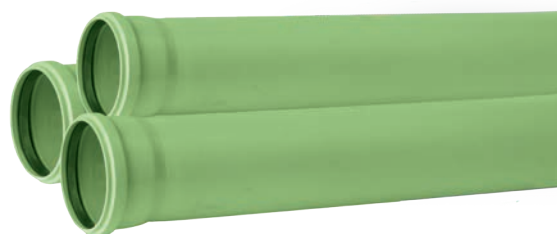
CODE

COMMENT

110mm x 132mm	OSKG 77390
160mm x 187mm	OSKG 77590

COMMERCIAL WASTE PIPE

- Below ground pipe
- Lengths as noted
- Rubber ring joint
- Polypropylene
- Green
- High Temperature
- Chemical Resistant



PRODUCT CODE	DESCRIPTION	SN RATING	LENGTH (M)	CRATE QTY	NOMINAL SIZE (MM)	OUTSIDE DIAMETER (MM)
OSKG 70380	110mm Green Pipe RRJ	SN8	5	67	100	110
OSKG 70580	160mm Green Pipe RRJ	SN8	5	33	150	160
OSKG 70680	200mm Green Pipe RRJ	SN8	5	18	175	200
OSKG 70790	250mm Green Pipe RRJ	SN8	3	11	225	250

Key

All items are DWV unless noted
M+F = Male, Female Ends

DWV= Drain Waste and Vent
F+F= Female, Female Ends

SW= Stormwater
ADJ= Adjustable

HIGH TEMPERATURE COMMERCIAL WASTE SYSTEM

ABOVE GROUND

FEATURES AND BENEFITS

- Compatible with Copper and PVC
- Superior, purpose made clipping system
- Cost effective
- Rubber ring joint: Integral part of design for expansion /easy and fast installation
- Quality German manufacture
- Other pipe diameters available 40mm, 160mm
- Two other grades available: Under ground / Sound proof
- Polypropylene is a more environmentally friendly product than PVC. It can be substituted for PVC to gain credits towards a projects Green Star ratings
- Ultra-smooth bore helps eliminate incrustation.

SPECIFICATIONS

- Made of polypropylene (PP), the range of High Temperature Commercial Waste Pipes and Fittings exhibit the following characteristics:
- Heat Stable: low coefficient of expansion
- Permanent low inflammability
- No limit on thermal load from hot waste water
- Appropriate for chemically aggressive waste water within a range of pH2 to pH12

BELOW GROUND

FEATURES AND BENEFITS

- Compatible with Copper and PVC
- Cost effective
- Rubber ring joint: Integral part of design for expansion /easy and fast installation
- Quality German manufacture
- Other fittings available to order including a range of Earthenware Adaptors.
- Polypropylene is a more environmentally friendly product than PVC. It can be substituted for PVC to gain credits towards a projects Green Star ratings
- Ultra-smooth bore helps eliminate incrustation.
- Self-cleaning, therefore low on maintenance

SPECIFICATIONS

- Made of polypropylene (PP), the range of High Temperature Commercial Waste Pipes and Fittings exhibit the following characteristics:
- Heat Stable: low coefficient of expansion
- Excellent resistance to impact and extremely tough – rated to SN10
- No limit on thermal load from hot waste water
- Appropriate for chemically aggressive waste water within a range of pH2 to pH12
- For Underground sewers and wastewater pipes



HT SAFE



KG2000

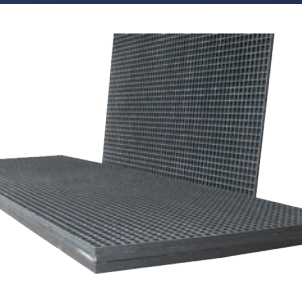
For more information visit the Ostendorf website at www.ostendorf-kunststoffe.com



NOTES:

To view technical documents
please visit **www.pandfglobal.com**

SECTION G: STORMWATER COLLECTION, PAINT, GLUE AND ACCESSORIES



STORMWATER COLLECTION

TOBY BOXES AND COVERS



SIZE	CODE	COMMENT
100mm	40-003	Toby Boxes (Alu)
150mm	40-004	Toby Boxes (Alu)
200mm	40-200	Sump Lids Round (Alu)
250mm	40-250	Sump Lids Round (Alu)
315mm	40-315	Sump Lids Round (Alu)
400mm	40-400	Sump Lids Round (Alu)

ALUMINIUM GRATINGS



SIZE	CODE	COMMENT
100mm	40-000	Drain Grates 4 inch Round
135mm	40-001	Drain Grates 5 inch Round
150mm	40-002	Drain Grates 6 inch Round
200mm	40-010	Drain Grates 8 inch Round
225mm	40-011	Drain Grates 9 inch Round
200mm	40-201	Sump Grates Round
250mm	40-251	Sump Grates Round
315mm	40-316	Sump Grates Round
400mm	40-401	Sump Grates Round

Key

All items are DWV unless noted
M+F = Male, Female Ends

DWV= Drain Waste and Vent
F+F= Female, Female Ends

SW= Stormwater
ADJ= Adjustable

PITS & SUMPS



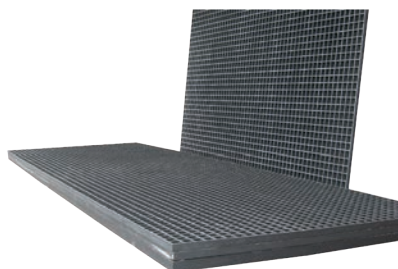
SIZE	CODE	COMMENT	CODE
250mm x 285mm deep	42-200	Poly. Square Base + Aluminium Grate	41-380 40-580
350mm x 315mm deep	42-201	Poly. Square Base + Aluminium Grate	41-930 40-590

EURO SUMP OR PIT



SIZE	CODE	LOAD RATING	COMMENT
550mm x 550mm	40-301-550		Euro Frame
200mm x 200mm	40-302-200	611kg	Euro Grate
300mm x 300mm	40-302-300	561kg	Euro Grate
400mm x 400mm	40-302-400	510kg	Euro Grate
550mm x 550mm	40-302-550	Pedestrian only	Euro Grate
200mm x 200mm	40-305-200	611kg	Euro Lid
300mm x 300mm	40-305-300	561kg	Euro Lid
400mm x 400mm	40-305-400	510kg	Euro Lid
200mm x 200mm	40-308-200		Euro Base
300mm x 300mm	40-308-300		Euro Base
400mm x 400mm	40-308-400		Euro Base
550mm x 520mm	40-308-550		Euro Base

FIBREGLASS GRATING



SIZE	CODE	COMMENT
3.660m x 1.220m x 25mm	42-325	Grey Grating Fibre
3.660m x 1.220m x 25mm	42-325GGG	Green grit Grating
3.660m x 1.220m x 38mm	42-338	Grey Grating Fibre
3.660m x 1.220m x 38mm	42-338GGG	Green grit Grating

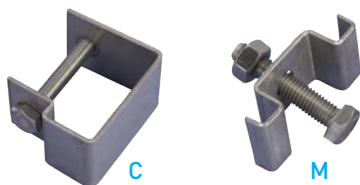
Key

All items are DWV unless noted
M+F = Male, Female Ends

DWV= Drain Waste and Vent
F+F= Female, Female Ends

SW= Stormwater
ADJ= Adjustable

CLIPS FOR FIBREGLASS GRATING



SIZE	CODE	COMMENT
38mm	42-301	Fixing Clip Grating C Type
25mm	42-311	Fixing Clip Grating C Type
25mm or 38mm	42-302	Fixing Clip Grating M Type

SUMP PIPES



SIZE	CODE	COMMENT
200mm x 1000mm	41-200	Round Pipe (PVC)
250mm x 1000mm	41-250	Round Pipe (PVC)
315mm x 1000mm	41-315	Round Pipe (PVC)
315mm x 1000mm	41-315S	Socket End
400mm x 1000mm	41-316	Round Pipe (PVC)

Grate not included. Pipes are white or green.

OUTLET FLANGES



SIZE	CODE	COMMENT
100mm	42-210	Sump Outlets

Key

All items are DWV unless noted
M+F = Male, Female Ends

DWV= Drain Waste and Vent
F+F= Female, Female Ends

SW= Stormwater
ADJ= Adjustable

CHANNEL & GRATE ORIGINAL STYLE

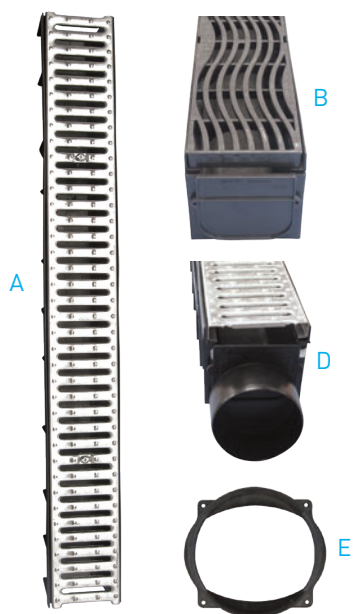


SIZE	CODE	COMMENT
100mm x 1m	43850	Channel & Grate
	43860	Connector
	43865	End Cap
	43870	Corner

A15 RATED

Light residential, garage entrances, doorway, pedestrian areas

CHANNEL & GRATE EURO STYLE



	SIZE	CODE	COMMENT
A	100mm x 1m	43950-1M	Channel and Galv Steel Grate
B	100mm x 1m	43960-1M	Channel and PE-HD Grate
C		43970	Closed end cap
D	100mm	43972	End Cap Outlet
E	100mm	43974	Vertical Outlet

A15 RATED

Light residential, garage entrances, doorway, pedestrian areas

Key

All items are DWV unless noted
M+F = Male, Female Ends

DWV= Drain Waste and Vent
F+F= Female, Female Ends

SW= Stormwater
ADJ= Adjustable

ACCESSORIES

FILTER CLOTH



SIZE	CODE	COMMENT
600mm x 50m	43-506	Filter Cloth
2m x 50m	44-240	Filter Cloth AS240
4m x 50m	48-140	Filter Cloth AS240
4m x 100m	48-240	Filter Cloth AS240*
4m x 100m	48-280	Filter Cloth AS280*

FILTER SOCK ON APPLICATOR



SIZE	CODE	COMMENT
110mm x 30m	43-607	Filter Sock on Applicator
110mm x 50m	43-608	Filter Sock on Applicator
110mm x 100m	43-609	Filter Sock on Applicator

Key

All items are DWV unless noted
M+F = Male, Female Ends

DWV= Drain Waste and Vent
F+F= Female, Female Ends

SW= Stormwater
ADJ= Adjustable

FLEXIBLE FLUMING

FLUMING



SIZE	CODE	TO FIT OUTSIDE DIAMETER	FITS EUROFLO® PIPE OD
225mm	FLUM225/M	285mm	250mm
300mm	FLUM300/M	370mm	315mm
375mm	FLUM375/M	445mm	400mm
450mm	FLUM450/M	535mm	500mm
525mm	FLUM525/M	620mm	630mm
600mm	FLUM600/M	715mm	800mm

Note: this is made to order

STAINLESS STEEL STRAP



SIZE	CODE	FITS EUROFLO® PIPE OD	COMMENT
225mm	FLUMSS225	250mm	
300mm	FLUMSS300	315mm	
375mm	FLUMSS375	400mm	
450mm	FLUMSS450	500mm	
525mm	FLUMSS525	630mm	
600mm	FLUMSS600	800mm	

Note: straps are sold individually

FEATURES AND BENEFITS

- Constructed from a durable PVC fabric
- Preserves embankments by directing discharge from culverts to desired outlet
- Available to fit 100-900mm concrete, plastic or steel pipe
- Customised sizes available
- Double or single cleat options
- Reinforced top edge to reduce fatigue damage to the fluming from the culvert edge
- Available with a unique anti-seal plastic core to prevent adhesion of the two surfaces during dry weather
- Stainless steel clamps also available



Key

All items are DWV unless noted
M+F = Male, Female Ends

DWV= Drain Waste and Vent
F+F= Female, Female Ends

SW= Stormwater
ADJ= Adjustable

GLUE

SOLVENT CEMENT



SIZE	CODE	BOX QUANTITY	COLOUR	COMMENT
250ml	C250	N/A	Clear	Cleaner/Primer, no dye included
500ml	C500	24	Red	Cleaner/Primer, + dye + roller
4 litre	C4000	4	Red	Cleaner/Primer, + dye
125ml	GP125	N/A	Green	Pressure Cement + Brush
250ml	GP250	N/A	Green	Pressure Cement + Brush
500ml	GP500	24	Clear	Pressure Cement + Brush
4 litre	GP4000	4	Clear	Pressure Cement
500ml	G500	24	Clear	Solvent Cement + Brush
4 litre	G4000	4	Clear	Solvent Cement
237ml	HG250	N/A	Clear	Hot Cement + Brush
473ml	HG500	N/A	Clear	Hot Cement + Brush

LUBE



SIZE	CODE	COMMENT
500gm	OSLU19210	Tube of Lube

Key

All items are DWV unless noted
M+F = Male, Female Ends

DWV= Drain Waste and Vent
F+F= Female, Female Ends

SW= Stormwater
ADJ= Adjustable

PAINT

AEROSOL PAINT



SIZE	CODE	COMMENT
400ml	M1806	Plain White (Inverted)
400ml	M1811	Fluro Red (Inverted)
400ml	M1812	Fluro Blue (Inverted)
400ml	M1813	Fluro Orange (Inverted)
400ml	M1814	Fluro Pink (Inverted)
400ml	M1815	Fluro Green (Inverted)
400ml	M1817	Fluro Purple (Inverted)
600ml	M2805	Plain Yellow (Inverted) Permanent Line Marking Paint
600ml	M2806	Plain White (Inverted) Permanent Line Marking Paint
600ml	M2808	Plain Black (Inverted) Permanent Line Marking Paint

12 cans per box.
Only sold in box quantities.

AEROSOL PAINT APPLICATORS

SIZE	CODE	COMMENT
500mm Long	M1500	Spotting Pistol
600mm Long	M1500L	Spotting Pistol
700mm Long	M1500XL	Spotting Pistol

Note: For use with aerosol paint, also suits Ultra Colour and Signet.



Key

All items are DWV unless noted
M+F = Male, Female Ends

DWV= Drain Waste and Vent
F+F= Female, Female Ends

SW= Stormwater
ADJ= Adjustable

FLEXIBLE CONNECTORS

FLEXIBLE CONNECTORS



RANGE	CODE	COMMENT
138-142mm / 101-116mm	1006-44	PVC to Earthenware
192-197mm / 152-167mm	1006-66	PVC to Earthenware
268-284mm/241-257mm	1051-1010	PVC to Earthenware
339-368mm/301-320mm	1002-1212	PVC to Earthenware
440-452mm/370-383mm	1002-1515	PVC to Earthenware
110-123mm/100-113mm	1051-44	PVC to Asbestos cement
164-178mm/149-164mm	1051-66	PVC to Asbestos cement
36-45mm	1056-150	PVC to PVC
47-56mm	1056-22	PVC to PVC
61-70mm	1060-22	PVC to PVC
75-84mm	1056-33	PVC to PVC
100-113mm/75-86mm	1056-43	PVC to PVC
101-116mm	1056-44	PVC to PVC
160-171mm/104-116mm	1056-64	PVC to PVC
155-165mm	1056-66	PVC to PVC
183-194mm	1056-88	PVC to PVC
240-256mm	1056-1010	PVC to PVC
299-317mm	1004-1212	PVC to PVC

Key

All items are DWV unless noted
M+F = Male, Female Ends

DWV= Drain Waste and Vent
F+F= Female, Female Ends

SW= Stormwater
ADJ= Adjustable



NOTES:

To view technical documents
please visit **www.pandfglobal.com**