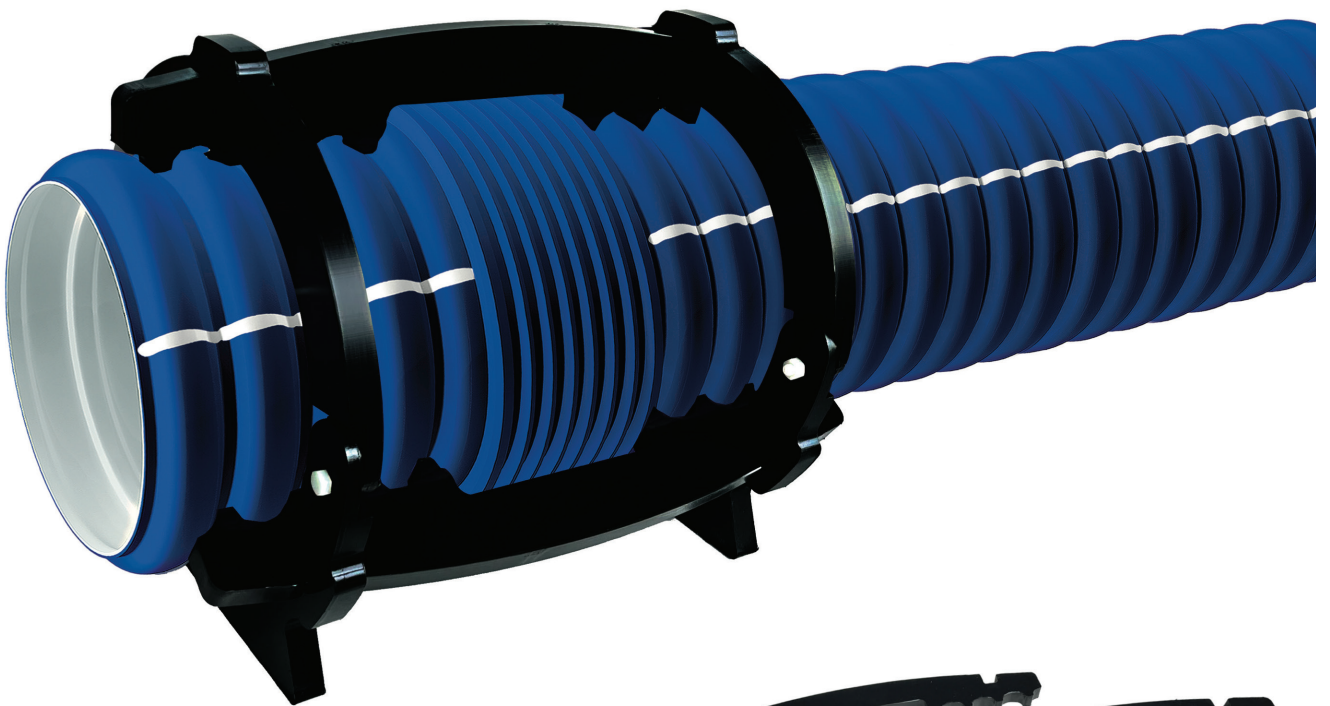


EUROFLO[®] JOINT CLAMP



The system is designed for SN8 and SN16 EUROFLO[®] corrugated pipes. The system is made from high-density polyethylene.



APPLICATION

The joint clamp was designed as a reinforcement system for the normal corrugated pipe coupling system for non-pressurised stormwater and wastewater distribution networks. In particular, it can be installed on sites where EUROFLO® pipes are laid with a steep slope and any ground movement may cause pipes to disconnect with a consequent hydraulic leak.



COMPOSITION

The clamp system consists of two circular components connected by transverse components to be positioned within the space between one rib and the next, in the proximity of the corrugated pipe joints. The joint clamp is available in different sizes according to the pipe diameter.



INSTALLATION

The joint is designed so that it can be easily assembled on site by the contractor: the various elements fit together without the use of special tools or steel fasteners. Once the pipes have been installed and connected, it is simply a matter of positioning the different joint clamp elements and then closing them with a simple click.

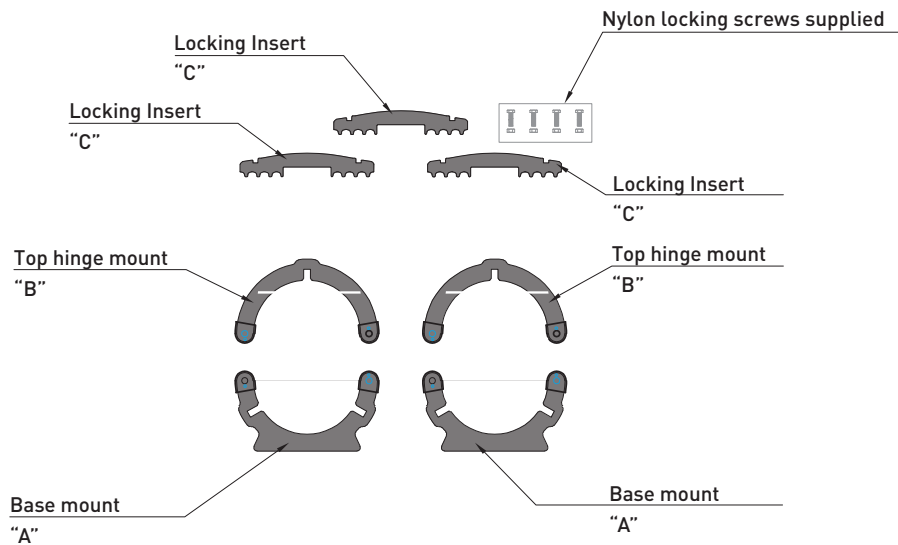
Available range OD 250mm to OD 800mm

On request the joint clamp can be produced with larger diameters.

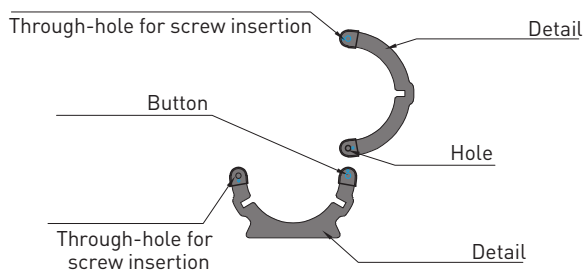


MOUNTING INSTRUCTIONS

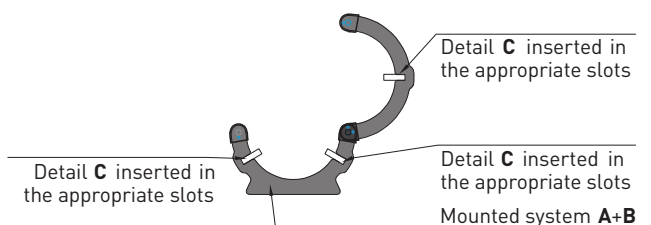
COMPONENTS



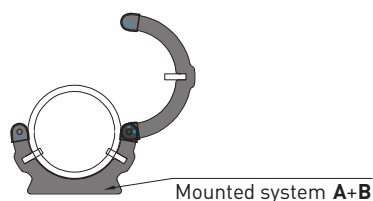
Step 1:
coupling of part A
with part B



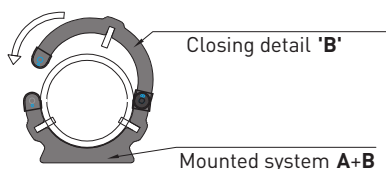
Step 2:
detail C inserted
in the A+B system



Step 3:
Insertion of EUROFLO pipe
over the socket joint



Step 4:
closing detail B



Step 5:
insertion of screws and
tightening with nut

