

# PVC PRESSURE FITTINGS

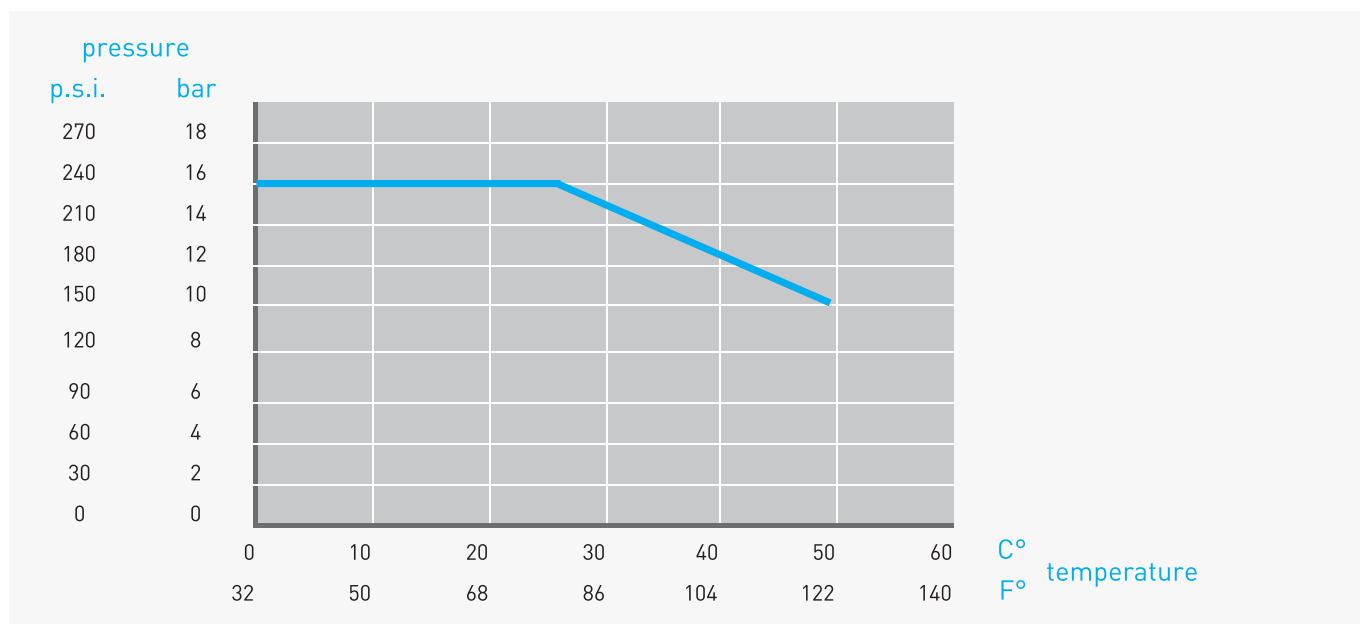
Technical Specifications Catalogue

PVC pipe is the world's most widely used medium for conveyance of fluids. The product has well recognised advantages of immunity to corrosion, chemical and micro-/macro-biological resistance, hydraulic capacity, ease of handling, and installation, together with toughness and flexibility. Its widespread applications are largely attributable to these features.

PVC fittings are manufactured by high-pressure injection moulding. All products are made to the demanding Australian and New Zealand standards.

A wide range, and innovative products give you the selection for your on-time, on-budget, quality installation.

## PRESSURE / TEMPERATURE GRAPH

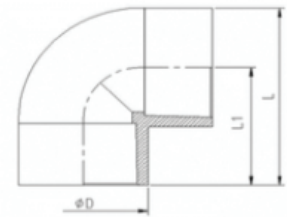


## PHYSICAL PROPERTIES

The general physical properties of uPVC are given below table.

PROPERTY	VALUE
<b>Physical &amp; mechanical</b>	
Specific gravity	1.43 to 1.5
Effect on potable water - AS 4020	Complies
Hydrostatic design stress	Up to and including DN 150=11 Mpa Mpa above DN150=12.3 MPa
Mean hoop stress at 20°C extrapolated to 50 years AS/NZS 1462.6	Up to and including DN 150=23.6 Mpa Mpa above DN150=26 MPa
Minimum notched hoop strength at 20°C extrapolated to 50 years	24.5 Mpa
Flexural modulus - ISO 9969	3200 Mpa
Poisson's Ratio	0.38 - 40
<b>Thermal</b>	
Coefficient of linear thermal expansion	70 x 10 <sup>-6</sup> per degree °C
Thermal conductivity	0.138 x 10 <sup>-3</sup> W/m.K
Specific heat	1045 J/kg.K
Maximum practicable working temperature	50°C
<b>Fire resistance</b>	
Flammability	Will not support combustion
Ignitability - AS 1530	8
Smoke development - AS 1530	7
Spread of flame - AS 1530	0
Heat evolved - AS 1530	0
<b>Electrical</b>	
Volume resistivity	10 <sup>16</sup> ohm.cm(60%RH)
Surface resistivity	10 <sup>13</sup> - 10 <sup>14</sup> ohm
Power factor	0.015 - 0.020 at 20°C
Dielectric constant	3.4 - 3.6 at 25°C (60Hz)

## UPVC PRESSURE FITTING - AS/NZS1477

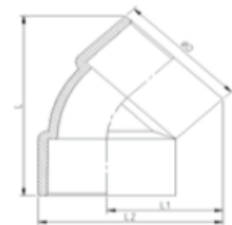


### 90 ELBOW

code	size	DN	end*	L	L1	D	weight kg
801-15-90	1/2"	15	S	45.75	32.00	27.50	0.02
801-20-90	3/4"	20	S	52.75	36.00	33.50	0.04
801-25-90	1"	25	S	65.75	45.00	41.50	0.06
801-32-90	1 1/4"	32	S	79.50	54.00	51.00	0.10
801-40-90	1 1/2"	40	S	86.50	58.00	57.00	0.12
801-50-90	2"	50	S	101.50	67.00	69.00	0.17
801-65-90	2 1/2"	65	S	132.75	88.40	88.75	0.42
801-80-90	3"	80	S	149.80	98.15	103.30	0.49
801-100-90	4"	100	S	188.20	121.75	132.90	0.94
801-150-90	6"	150	S	266.85	173.70	186.30	3.00
801-200-90	8"	200	S	362.00	237.75	248.50	5.50

**Material:** 1. Body - uPVC

\*S = Socket glued



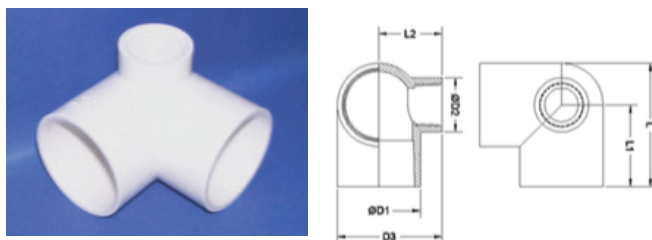
### 45 ELBOW

code	size	DN	end*	L1	L2	L	D	weight kg
801-150-45	1/2"	15	S	24.92	37.82	47.26	25.80	0.01
801-20-45	3/4"	20	S	29.70	45.75	55.65	32.10	0.02
801-25-45	1"	25	S	35.61	55.66	65.90	40.10	0.03
801-32-45	1 1/4"	32	S	43.94	68.79	81.24	49.70	0.06
801-40-45	1 1/2"	40	S	49.51	77.81	91.24	56.60	0.08
801-50-45	2"	50	S	60.86	96.26	111.52	70.80	0.15
801-65-45	2 1/2"	65	S	74.80	118.45	136.90	87.35	0.27
801-80-45	3"	80	S	87.00	138.66	158.40	103.3	0.42
801-100-45	4"	100	S	108.88	175.33	196.40	132.9	0.86
801-15-45	6"	150	S	154.67	247.82	280.25	186.3	2.50
801-200-45	8"	200	S	208.00	232.30	378.00	248.50	3.95

**Material:** 1. Body - uPVC

\*S = Socket glued

## UPVC PRESSURE FITTING - AS/NZS1477

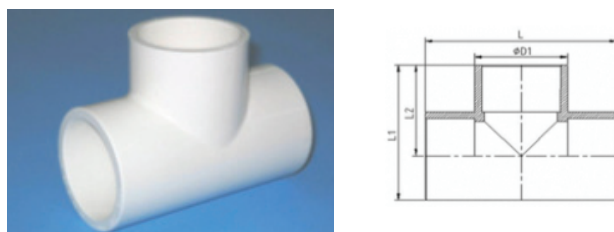


### SIDE OUTLET ELBOW

code	size	DN	end*	D1	D2	L1	L3	weight kg
802-20-15	3/4"x1/2"	20x15	SxT	32.10	25.80	48.95	26.80	0.028
802-25-15	1"x1/2"	25x15	SxT	39.60	25.80	58.80	30.20	0.045

**Material:** 1. Body - uPVC

\*SxT = Socket glued x small female thread



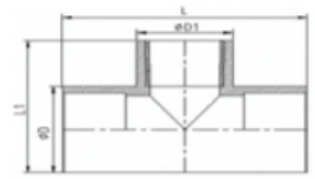
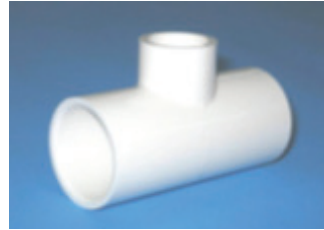
### TEE

code	size	DN	end*	L	L1	L2	D	weight kg
804-15	1/2"	15	S	61.40	44.95	30.70	27.50	0.03
804-20	3/4"	20	S	68.60	51.75	35.00	32.50	0.04
804-25	1"	25	S	85.00	65.25	44.00	40.50	0.08
804-32	1 1/4"	32	S	98.50	76.75	51.00	49.50	0.13
804-40	1 1/2"	40	S	113.00	87.50	57.50	58.00	0.19
804-50	2"	50	S	138.00	107.00	70.00	71.00	0.34
804-65	2 1/2"	65	S	165.00	124.48	82.50	87.95	0.47
804-80	3"	80	S	196.30	98.15	149.80	103.30	0.72
804-100	4"	100	S	243.50	121.75	188.20	132.90	1.44
804-150	6"	150	S	347.40	173.70	266.85	186.30	5.85
804-200	8"	200	S	465.60	357.00	232.80	248.50	6.67

**Material:** 1. Body - uPVC

\*S = Socket glued

## UPVC PRESSURE FITTING - AS/NZS1477



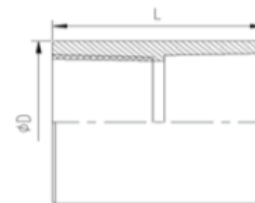
### REDUCING TEE

code	size	DN	end*	L	L1	D	D1	weight kg
805-20-15	3/4"x1/2"	20x15	S	68.60	51.75	32.50	27.50	0.04
805-25-15	1"x1/2"	25x15	S	85.00	65.25	40.50	27.50	0.08
805-25-20	1"x3/4"	25x20	S	85.00	65.25	40.50	32.50	0.08
805-32-25	1 1/4"x1"	32x25	S	90.00	68.85	49.70	40.10	0.13
805-40-15	1 1/2"x1/2"	40x15	S	83.00	71.85	60.00	30.00	0.19
805-40-20	1 1/2"x3/4"	40x20	S	87.20	71.95	56.60	32.10	0.19
805-40-25	1 1/2"x1"	40x25	S	94.00	74.15	56.60	40.10	0.19
805-40-32	1 1/2"x1 1/4"	40x32	S	103.70	80.30	56.60	49.70	0.19
805-50-25	2"x1"	50x25	S	106.00	87.80	70.80	40.10	0.34
805-50-40	2"x1 1/2"	50x40	S	120.70	95.80	70.80	56.60	0.34
805-80-25	3"x1"	80x25	S	135.00	120.50	106.40	43.80	0.52
805-80-40	3"x1 1/2"	80x40	S	150.00	129.00	106.40	60.00	0.60
805-80-50	3"x2"	80x50	S	162.00	135.00	106.40	73.00	0.66
805-80-65	3"x2 1/2"	80x65	S	178.00	143.00	106.40	89.00	0.77
805-100-50	4"x2"	100x50	S	183.00	161.50	134.00	73.00	1.04
805-100-80	4"x3"	100x80	S	213.00	174.20	134.00	106.40	1.33
805-150-100	6"x4"	150x100	S	302.00	238.00	184.50	134.00	2.95

**Material:** 1. Body - uPVC

\*S = Socket glued

## UPVC PRESSURE FITTING - AS/NZS1477

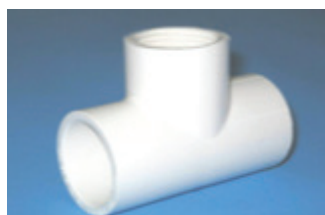


### FAUCET SOCKET

code	size	DN	end*	L	D	weight kg
806-15	1/2"	15	SxT	39.00	28.00	0.02
806-20	3/4"	20	SxT	44.00	33.00	0.03
806-20-15	3/4" x 1/2"	20x15	SxT	50.00	33.00	0.03
806-25	1"	25	SxT	56.00	42.00	0.05
806-25-15	1" x 1/2"	25x15	SxT	55.00	42.00	0.05
806-32	1 1/4"	32	SxT	56.00	51.00	0.06
806-40	1 1/2"	40	SxT	64.00	57.00	0.08
806-50	2"	50	SxT	70.00	70.00	0.12
806-65	2 1/2"	65	SxT	92.00	87.35	0.22
806-80	3"	80	SxT	104.00	103.30	0.37
806-100	4"	100	SxT	125.00	132.90	0.73
806-150	6"	150	SxT	181.00	186.30	1.97

**Material:** 1. Body - uPVC

\*SxT = Socket glued x female thread



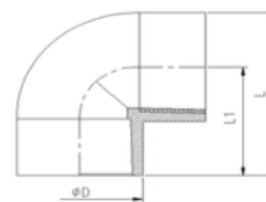
### FAUCET TEE

code	size	DN	end*	L	L1	L2	D	weight kg
807-15	1/2"x1/2"	15x15	SxTxS	61.40	44.95	30.70	27.50	0.03
807-20	3/4"x3/4"	20x20	SxTxS	68.60	51.75	35.00	32.50	0.04
807-25	1"x1"	25x25	SxTxS	85.00	65.25	44.00	40.50	0.09
807-25-20	1"X3/4"	25x20	SxTxS	85.00	65.25	40.50	32.50	0.08
807-32	1 1/4"x1 1/4"	32x32	SxTxS	98.50	76.75	51.00	49.50	0.16
807-40	1 1/2"x1 1/2"	40x40	SxTxS	113.00	87.50	57.50	58.00	0.22
807-50	2"x2"	50x50	SxTxS	138.00	107.00	70.00	71.00	0.38

**Material:** 1. Body - uPVC

\*SxTxS = Socket glued x female thread x Socket glued

## UPVC PRESSURE FITTING - AS/NZS1477

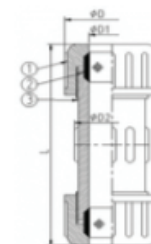


### 90 FAUCET ELBOW

code	size	DN	end*	L	L1	D	weight kg
808-15-90	1/2"x1/2"	15x15	SxT	61.40	44.95	27.50	0.03
808-20-90	3/4"x3/4"	20x20	SxT	85.00	65.25	40.50	0.07
808-25-90	1"x1"	25x25	SxT	85.00	65.25	40.50	0.07
808-32-90	1 1/4"x1 1/4"	32x32	SxT	74.00	46.85	42.70	0.11
808-40-90	1 1/2"x1 1/2"	40x40	SxT	86.60	58.30	56.60	0.15
808-50-90	2"x2"	50x50	SxT	106.80	71.40	70.80	0.19

**Material:** 1. Body - uPVC

\*SxT = Socket glued x female thread



### COMPRESSION COUPLING

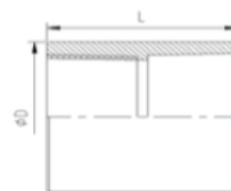
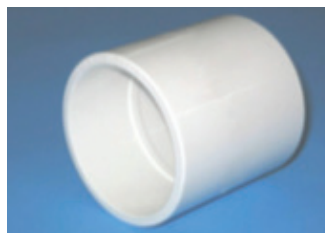
code	size	DN	D	D1	D2	L	weight kg
809-15	1/2"	15	47.00	23.00	36.00	130.00	0.12
809-20	3/4"	20	53.00	29.00	43.00	135.00	0.15
809-25	1"	25	61.00	35.00	49.00	147.00	0.22
809-32	1 1/4"	32	72.00	43.50	57.00	160.00	0.30
809-40	1 1/2"	40	79.00	50.00	67.00	180.00	0.39
809-50	2"	50	91.00	62.00	78.00	200.00	0.54
809-65	2 1/2"	65	114.00	76.50	93.00	250.00	0.98
809-80	3"	80	134.00	93.00	115.00	276.00	1.40
809-100	4"	100	160.00	119.00	140.00	305.00	2.07

**Material:** 1. Union Nut - uPVC 2. Seal - EPDM, NBR 3. Body - uPVC

**Test Pressure:** 255 PSI @ 73 F

**Working Pressure:** 150 PSI @ 73 F

## UPVC PRESSURE FITTING - AS/NZS1477

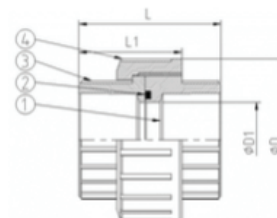


### SOCKET

code	size	DN	end*	L	D	weight kg
810-15	1/2"	15	S	39.00	28.00	0.02
810-20	3/4"	20	S	44.00	33.00	0.02
810-25	1"	25	S	56.00	42.00	0.04
810-32	1 1/4"	32	S	56.00	51.00	0.05
810-40	1 1/2"	40	S	64.00	57.00	0.08
810-50	2"	50	S	70.00	70.00	0.10
810-65	2 1/2"	65	S	92.00	87.35	0.21
810-80	3"	80	S	104.00	103.30	0.33
810-100	4"	100	S	125.00	132.90	0.66
810-150	6"	150	S	181.00	186.30	1.79
810-200	8"	200	S	244.00	248.50	3.00

**Material:** 1. Body - uPVC

\*S = Socket glued



### COMPRESSION UNION

code	size	DN	L	L1	D	D1	weight kg
811-15	811T-15	1/2"	55.00	36.50	48.50	16.00	0.06
811-20	811T-20	3/4"	62.50	42.00	56.00	21.50	0.09
811-25	811T-25	1"	70.00	49.00	66.50	27.00	0.14
811-32	811T-32	1 1/4"	78.50	53.50	78.00	32.00	0.21
811-40	811T-40	1 1/2"	85.50	62.00	90.00	37.50	0.30
811-50	811T-50	2"	93.00	67.50	105.00	49.00	0.43
811-65	811T-65	2 1/2"	108.50	78.00	125.00	64.00	0.71
811-80	811T-80	3"	116.00	80.50	146.40	75.20	0.92
811-100	811T-100	4"	140.00	98.00	170.00	104.00	1.36

**Material:** 1. Body - uPVC 2. O'ring - EPDM, NBR 3. Union End - uPVC 4. Union Nut - uPVC

**Available in threaded or glue socket ends**

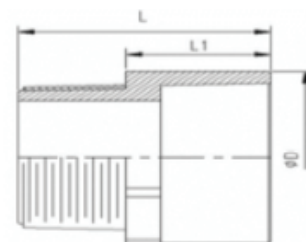
For threaded ends use codes starting with 811T-

**Test Pressure:** 255 PSI @ 73 F

**Working Pressure:** 150 PSI @ 73 F



## UPVC PRESSURE FITTING - AS/NZS1477

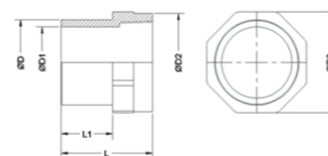
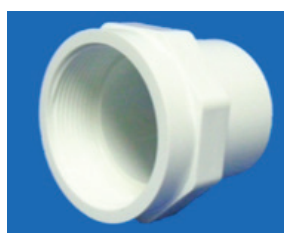


### VALVE SOCKET

code	size	DN	end*	L	L1	D	weight kg
813-15	1/2"	15	SxT	44.00	23.00	28.00	0.02
813-20	3/4"	20	SxT	45.00	25.00	32.50	0.02
813-25	1"	25	SxT	55.00	30.00	40.50	0.03
813-32	1 1/4"	32	SxT	60.00	32.00	49.50	0.05
813-40	1 1/2"	40	SxT	64.00	36.00	56.00	0.06
813-50	2"	50	SxT	66.00	37.00	68.50	0.08
813-65	2 1/2"	65	SxT	93.20	66.50	88.00	0.22
813-80	3"	80	SxT	94.00	51.00	101.00	0.24
813-100	4"	100	SxT	104.80	69.00	103.30	0.55
813-150	6"	150	SxT	140.10	100.00	186.30	1.45

**Material:** 1. Body - uPVC

\*SxT = Socket glued x male thread



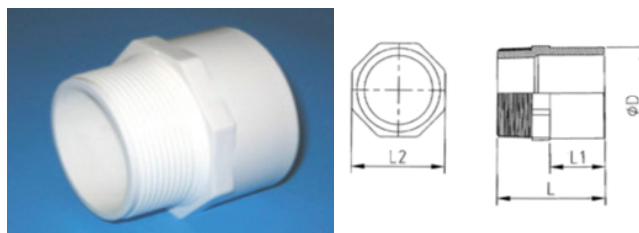
### FAUCET SPIGOT

code	size	DN	end*	D	D1	D2	D3	weight kg
816-15	1/2"	15	SxT	24.92	37.82	47.26	25.80	0.01
816-20	3/4"	20	SxT	29.70	45.75	55.65	32.10	0.02
816-25	1"	25	SxT	35.61	55.66	65.90	40.10	0.03
816-32	1 1/4"	32	SxT	43.94	68.79	81.24	49.70	0.06
816-40	1 1/2"	40	SxT	49.51	77.81	91.24	56.60	0.08
816-50	2"	50	SxT	60.86	96.26	111.52	70.80	0.15

**Material:** 1. Body - uPVC

\*S = Socket glued to \*SxT = Male socket glued x female thread

## UPVC PRESSURE FITTING - AS/NZS1477

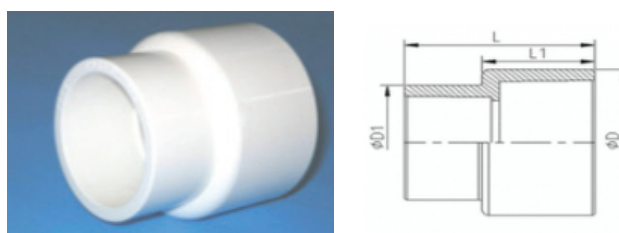


### VALVE SPIGOT

code	size	DN	end*	L1	L2	L	D	weight kg
817-15	1/2"	15	SxT	19.00	22.35	37.20	21.35	0.007
817-20	3/4"	20	SxT	20.00	27.75	40.50	26.75	0.011
817-25	1"	25	SxT	23.00	34.95	46.80	33.35	0.020
817-32	1 1/4"	32	SxT	29.00	43.85	56.10	42.25	0.036
817-40	1 1/2"	40	SxT	30.00	50.25	59.10	48.25	0.050
817-50	2"	50	SxT	37.00	62.35	72.40	60.35	0.093
817-80	3"	80	SxT	51.00	91.95	94.80	88.95	0.260
817-100	4"	100	SxT	N/A made from valve socket	N/A made from valve socket	N/A made from valve socket	N/A made from valve socket	N/A made from valve socket

**Material:** 1. Body - uPVC

\*SxT = Male socket glued x male thread



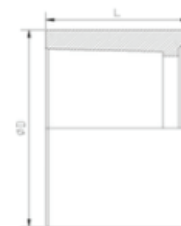
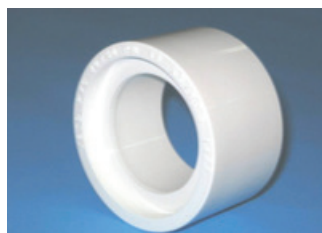
### REDUCING SOCKET

code	size	DN	end*	L	L1	D	D1	weight kg
823-20-15	3/4"x1/2"	20x15	S	40.00	24.00	33.00	27.50	0.03
823-25-15	1"x1/2"	25x15	S	54.00	34.00	43.00	29.00	0.04
823-25-20	1"x3/4"	25x20	S	57.00	34.00	43.00	35.00	0.04
823-32-20	1 1/4"x3/4"	32x20	S	59.50	37.00	52.50	35.00	0.06
823-32-25	1 1/4"x1"	32x25	S	63.00	37.00	52.50	43.00	0.06
823-40-20	1 1/2"x3/4"	40x20	S	62.50	40.00	59.00	35.00	0.07
823-40-25	1 1/2"x1"	40x25	S	66.00	40.00	59.00	43.00	0.08
823-40-32	1 1/2"x1 1/4"	40x32	S	69.00	40.00	59.00	52.50	0.08
823-50-20	2"x 3/4"	50x20	S	70.00	45.00	72.00	35.00	0.13
823-50-25	2"x1"	50x25	S	69.50	45.00	72.00	43.00	0.11
823-50-32	2"x1 1/4"	50x32	S	72.50	45.00	72.00	52.50	0.11
823-50-40	2"x1 1/2"	50x40	S	75.00	45.00	72.00	59.00	0.12
823-65-50	2 1/2"x2"	65x50	S	83.50	50.50	87.50	70.80	0.17
823-80-65	3"x2 1/2"	80x65	S	89.00	57.50	103.30	87.50	0.27
823-100-50	4"x2"	100x50	S	100.00	69.00	132.90	70.80	0.48
823-100-80	4"x3"	100x80	S	115.00	69.00	132.90	103.30	0.52
823-125-100	5"x 4"	125x100	S	180.00	90.00	141.00	115.20	1.19
823-150-100	6"x4"	150x100	S	152.00	100.00	186.30	132.90	1.36
823-200-150	8"x6"	200x150	S	217.00	130.00	248.50	178.70	2.45

**Material:** 1. Body - uPVC

\*S = Socket glued

## UPVC PRESSURE FITTING - AS/NZS1477

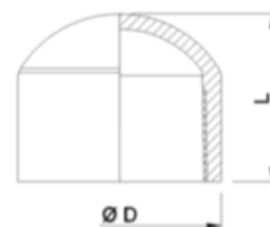
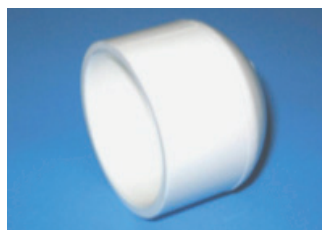


### REDUCING BUSH

code	size	DN	end*	L	D	weight kg
824-20-15	3/4"x1/2"	20x15	S	19.30	26.75	0.006
824-25-15	1"x1/2"	25x15	S	22.00	33.55	0.010
824-25-20	1"x3/4"	25x20	S	22.00	33.55	0.010
824-32-20	1 1/4"x 3/4"	32x20	S	28.00	42.25	0.013
824-32-25	1 1/4"x1"	32x25	S	27.00	42.25	0.020
824-40-25	1 1/2"x1"	40x25	S	30.00	48.25	0.036
824-40-32	1 1/2"x1 1/4"	40x32	S	30.00	48.25	0.018
824-50-25	2"x1"	50x25	S	36.00	60.35	0.062
824-50-40	2"x1 1/2"	50x40	S	36.00	60.35	0.051
824-65-50	2 1/2"x2"	65x50	S	44.00	75.35	0.100
824-80-50	3"x2"	80x50	S	50.00	88.60	0.189
824-80-65	3"x2 1/2"	80x65	S	50.00	88.90	0.130
824-100-50	4"x2"	100x50	S	60.00	114.30	0.420
824-100-80	4"x3"	100x80	S	60.00	114.30	0.320
824-150-100	6"x4"	150x100	S	87.00	156.25	1.080
824-200-150	8"x6"	200x150	S	118.50	225.30	2.500

**Material:** 1. Body - uPVC

\*S = Socket glued



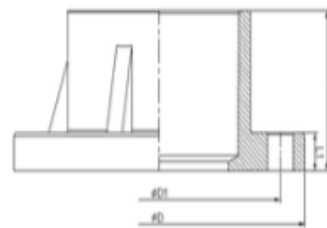
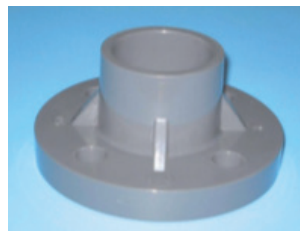
### CAP THREADED

code	size	DN	end*	L	D	weight kg
830T-15	1/2"	15	T	26.94	27.50	0.01
830T-20	3/4"	20	T	30.38	32.50	0.01
830T-25	1"	25	T	37.69	40.50	0.02
830T-32	1 1/4"	32	T	42.29	49.50	0.03
830T-40	1 1/2"	40	T	48.74	58.00	0.05
830T-50	2"	50	T	58.50	71.00	0.09
830T-80	3"	80	T	63.90	103.30	0.23
830T-100	4"	100	T	77.90	132.90	0.46
830T-150	6"	150	T	112.60	186.30	1.30

**Material:** 1. Body - uPVC

\*T = Female thread

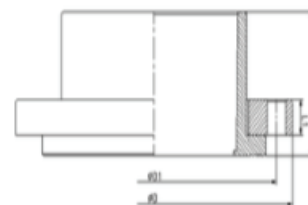
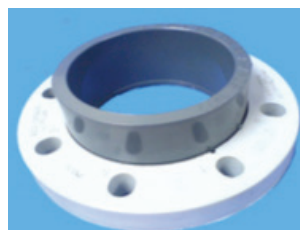
## UPVC FLANGE



### FLANGE (JIS 10K)

code	size	DN	D	D1	L	L1	weight kg
852-15	1/2"	15	95.00	70.00	35.00	14.00	0.14
852-20	3/4"	20	100.00	75.00	40.00	15.00	0.16
852-25	1"	25	125.00	90.00	46.00	15.00	0.25
852-32	1 1/4"	32	135.00	100.00	50.50	18.00	0.31
852-40	1 1/2"	40	140.00	105.00	61.50	18.00	0.40
852-50	2"	50	155.00	120.00	71.00	20.00	0.58
852-65	2 1/2"	65	175.00	140.00	70.00	22.00	0.76
852-80	3"	80	185.00	150.00	73.00	22.00	0.84
852-100	4"	100	210.00	175.00	93.00	22.00	1.14
852-150	6"	150	280.00	240.00	141.00	26.00	2.55

**Material:** 1. Body - uPVC



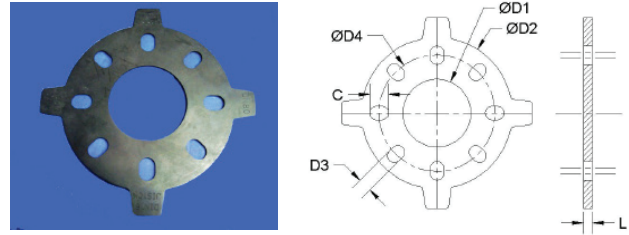
### VAN STONE FLANGE (DIN, ANSI, AUST, CNS)

code	size	DN	L	L1	D	D1	weight kg
854-80	3"	80	53.50	27.00	184.00	149.00	0.70
854-100	4"	100	64.00	30.00	230.22	185.00	1.21
854-150	6"	150	87.00	32.50	292.00	240.00	2.43
854-200	8"	200	127.00	35.50	346.00	294.00	3.36
854-250	10"	250	155.50	41.50	409.00	367.00	5.50
854-300	12"	300	400.00	56.00	445.00	400.00	7.28

**Material:** 1. Body - uPVC 2. Body - uPVC Filled Fiberglass

**Note:** 854-300 is only to DIN PN10 spec

# EPDM FLANGE GASKET



**FLANGE GASKET COMBINED SPEC (ANS1150, AS2129) TABLE E&D, DIN16**

code	size	DN	D1	D2	D3	L	C	weight kg
855-15	1/2"	15	18.00	93	14.00	3.00	14.00	0.020
855-20	3/4"	20	22.00	99	14.00	3.00	14.00	0.020
855-25	1"	25	35.00	125.00	18.00	3.00	23.50	0.030
855-32	1 1/4"	32	37.00	132.00	18.00	3.00	18.00	0.030
855-40	1 1/2"	40	53.00	132.00	18.00	3.00	18.00	0.030
855-50	2"	50	61.00	165.00	18.00	3.00	23.75	0.050
855-65	2 1/2"	65	76.00	185.00	18.00	3.00	27.00	0.062
855-80	3"	80	90.00	200.00	18.00	3.00	25.00	0.066
855-100	4"	100	115.00	228.00	18.00	3.00	26.00	0.080
855-150	6"	150	169.00	290.00	22.00	3.00	25.25	0.120
855-200	8"	200	226.00	335.00	22.00	3.00	24.50	0.37
855-250	10"	250	272.00	406.00	22.00	3.00	25.00	0.45
855-300	12"	300	309.00	441.00	22.00	3.00	22.00	0.60

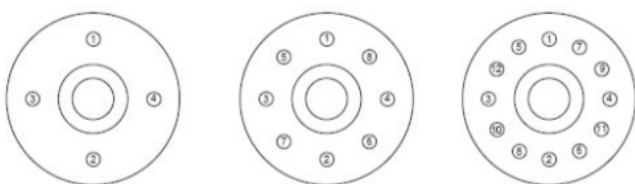
**Material:** 1. Body - EPDM

## INSTALLATION PROCEDURES

### FLANGE BOLTING PROCEDURE

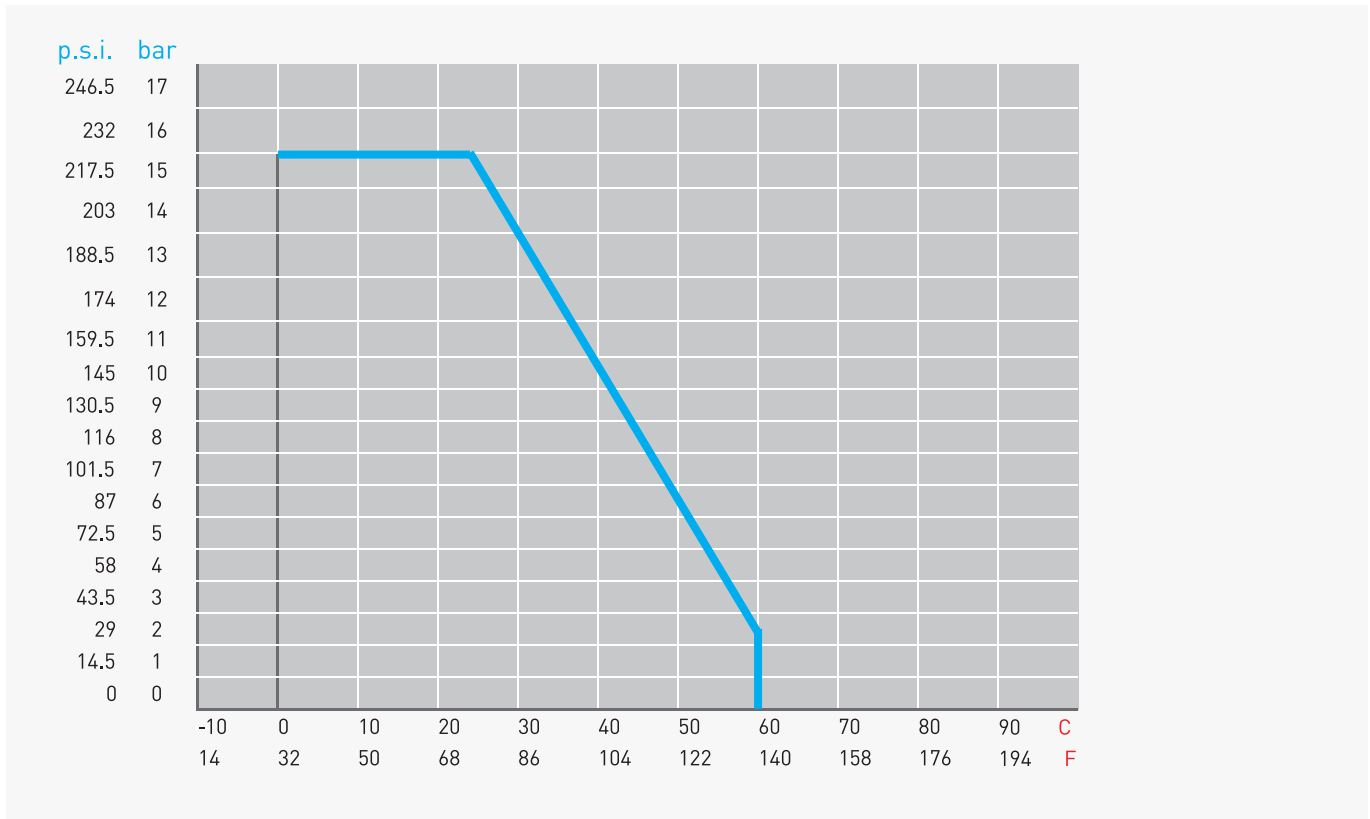
The following procedure is recommended for installing the uPVC flange

1. Inspect flange faces and ensure that they are clean and undamaged.
2. Check that the correct backing ring and rubber gaskets have been supplied. Do not interchange metric and imperial components.
3. Loosely assemble flanges. Ensure that flanges and bolt holes align and that the flange faces are parallel. Ensure that the gasket is correctly positioned between the flanges.
4. Ensure that the appropriate sized washer are placed under both bolt heads and nuts.
5. Tighten the nuts and bolts in a diagonally opposite sequence to ensure even loading around the flange to avoid distortion. It is recommended that the nuts and bolts be tightened as uniformly as possible progressively from a finger tight start.
6. Repeat as necessary until tightness of all bolts is achieved.



# TECHNICAL CHARACTER

## PRESSURE-TEMPERATURE DIAGRAM BALL VALVE



## INSTALLATION PROCEDURES

### GENERAL INSTALLATION RECOMMENDATIONS FOR UPVC VALVES

Assembling a uPVC valve, there are some factors to be consider to prevent tensions that can cause damages or breaks:

#### The weight of the pipe

Valves should be separately supported, the operating force is then applied directly to the fixations and not transmitted through the pipeline.

#### The expansions and concentrations

UPVC pipes exposed to temperature variations, require changes in pipes length to prevent extra strain on the valves and fittings.

#### Additional strength

Prevent possible extra weights on the valves and vibes caused by other equipments.

#### Use a spanner to tight the nuts of the valve

Valve nuts have to be tightened by hand onto the body. Never use a metal tool. If you can't achieve the required tightness then lubricate the threads with Vaseline grease or silicone oil.

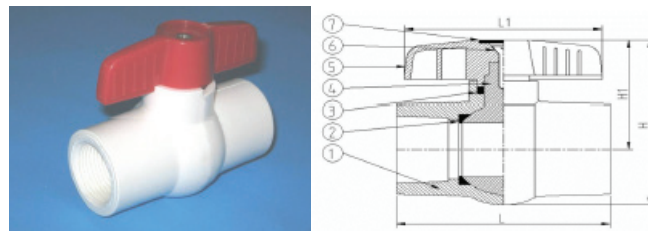
### BALL VALVE INSTALLATION PROCEDURES

**Union-End Ball Valves** can be fitted with socket, threaded, or flanged end connections. When joining union-end valves, or when flanging end connectors, never make the joint to the end connectors while they are attached to the valve body. Remove the union nuts and end connectors from the valve cartridge first. In order to prevent mishaps with the union nut, slide it (smallest bore first) over the pipe or nipple and flange hub (when flanging) before making the joint to the end connector.

**Threaded-End Valves** –Caution: Do not overtighten threads. Usually, one to two turns beyond hand-tight using a suitable strap-wrench, if necessary, is sufficient. (ANSI B1.20.1 defines hand-tight as 4 to 5 threads for sizes through 2" and 5 to 6 3/4 threads for sizes over 2".)

**Socket-End Valves** – Caution: Do not allow purple primer or solvent cement to come in contact with the sealing face of the end connectors. When joining the fixed end of a single union valve, place the ball in the open position to allow for proper drying and to avoid primer or solvent cement contacting internal components of the valve.

## UPVC BALL VALVE

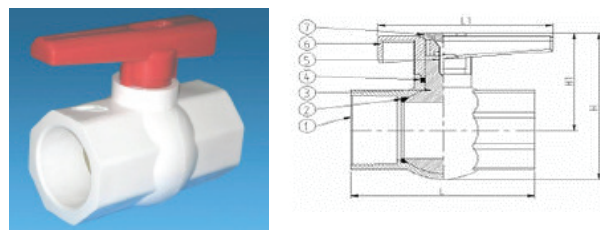


### BALL VALVE (PN16)

code	size	DN	end*	L	L1	H	H1	weight kg
PBVT-15	1/2"	15	TxT	83.00	70.00	64.00	45.00	0.08
PBVT-20	3/4"	20	TxT	95.00	88.00	79.00	55.00	0.14
PBVT-25	1"	25	TxT	106.00	100.00	94.00	65.00	0.22
PBVT-32	1 1/4"	32	TxT	114.00	100.00	99.00	67.00	0.27
PBVT-40	1 1/2"	40	TxT	130.00	109.00	116.00	78.00	0.43
PBVT-50	2"	50	TxT	147.00	134.00	135.00	89.00	0.70

**Material:** 1. Body - uPVC 2. Seat - EPDM, PTFE 3. O'ring - Viton, EPDM, NBR 4. Ball - uPVC 5. Handle - ABS  
6. Screw - Nickel Plated Steel 7. Cap - ABS

\*T=Socket threaded



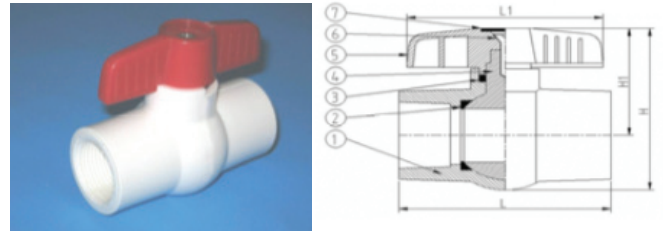
### BALL VALVE (PN16)

code	size	DN	end*	L	L1	H	H1	weight kg
PBVT-65	2 1/2"	65	TxT	172.40	174.00	163.80	111.80	0.97
PBVT-80	3"	80	TxT	195.10	187.00	190.70	126.70	1.48
PBVT-100	4"	100	TxT	244.30	248.00	156.60	239.60	3.15

**Material:** 1. Body - uPVC 2. Seat - EPDM, PTFE 3. Ball - uPVC 4. Stem O'ring - EPDM, NBR, Viton  
5. Screw - Nickel plated steel 6. Handle - ABS 7. Handle Cap - UPVC

\*T=Socket threaded

## UPVC BALL VALVE

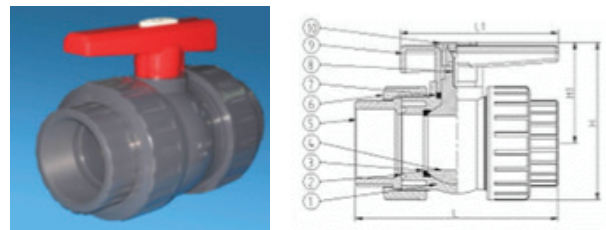


### BALL VALVE

code	size	DN	end*	L	L1	H	H1	weight kg
PBVS-15	1/2"	15	S	83.00	70.00	64.00	45.00	0.08
PBVS-20	3/4"	20	S	95.00	88.00	79.00	55.00	0.14
PBVS-25	1"	25	S	106.00	100.00	94.00	65.00	0.22
PBVS-32	1 1/4"	32	S	114.00	100.00	99.00	67.00	0.27
PBVS-40	1 1/2"	40	S	130.00	109.00	116.00	78.00	0.43
PBVS-50	2"	50	S	147.00	134.00	135.00	89.00	0.70

**Material:** 1. Body - uPVC 2. Seat - EPDM, PTFE 3. O'ring - Viton, EPDM, NBR 4. Ball - uPVC 5. Handle - ABS  
6. Screw - Nickel Plated Steel 7. Cap - ABS

\*S=Socket glued



### DOUBLE UNION BALL VALVE (SCH120, PN18)

code	size	DN	end*	L	L1	H	H1	weight kg
PDUVT-15	1/2"	15	TxT	101.80	75.00	65.75	41.50	0.15
PDUVT-20	3/4"	20	TxT	118.00	88.00	79.50	51.50	0.22
PDUVT-25	1"	25	TxT	141.00	105.00	96.60	63.40	0.38
PDUVT-32	1 1/4"	32	TxT	149.60	108.50	106.20	67.20	0.52
PDUVT-40	1 1/2"	40	TxT	176.00	131.00	126.00	81.00	0.83
PDUVT-50	2"	50	TxT	191.60	143.00	143.50	91.00	1.21
PDUVT-65	2 1/2"	65	TxT	223.50	174.00	111.80	174.30	2.00
PDUVT-80	3"	80	TxT	230.00	187.00	197.90	124.70	2.74
PDUVT-100	4"	100	TxT	294.00	248.00	242.60	156.00	4.58
PDUVT-150	6"	150	TxT	453.40	380.00	535.50	232.00	14.70

**Material:** 1. Body - uPVC 2. union O'ring - EPDM, NBR, Viton 3. Seat - EPDM, PTFE 4. Ball - uPVC 5. Union End - uPVC  
6. Union - uPVC 7. Stem O'ring - EPDM, NBR, Viton 8. Screw - Nickel plated steel 9. Handle - ABS  
10. Handle Cap - uPVC

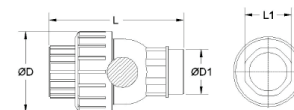
\*T=Socket threaded

Threaded ends are standard.

Glued socket ends can be ordered separately.



## UPVC PRESSURE FITTINGS



### CHECK VALVE BALL

code	type	size	DN	D	D1	L	L1	weight kg
PCVB-20	S	3/4"	20	58.00	32.00	104.00	34.00	0.13
PCVB-25	S	1"	25	58.00	39.00	108.50	40.00	0.14
PCVB-32	S	1 1/4"	32	101.40	55.60	167.00	55.00	0.62
PCVB-40	S	1 1/2"	40	102.00	56.00	145.00	55.00	0.57
PCVB-50	S	2"	50	102.00	69.00	155.00	68.00	0.62



### HOSE NIPPLE

code	size	DN	end*	D	D1	D2	L	L1	weight kg
860-15	1/2"	15	TXT	12.90	17.30	24.00	60.20	26.78	0.014
860-20	3/4"	20	TXT	14.83	20.00	30.00	66.50	33.71	0.021
860-25	1"	25	TXT	19.90	26.40	36.00	68.80	40.64	0.032
860-32	1 1/4"	32	TXT	24.60	32.70	46.00	77.10	51.88	0.056
860-40	1 1/2"	40	TXT	30.30	39.70	55.00	84.10	61.65	0.085
860-50	2"	50	TXT	41.08	52.40	65.00	93.40	73.82	0.135
860-65	2 1/2"	65	TXT	50.80	65.00	80.00	114.70	89.92	0.243
860-80	3"	80	TXT	60.70	77.00	95.00	142.80	106.60	0.406
860-100	4"	100	TXT	86.0	103.00	120.00	147.80	135.47	0.660